

**HAMMOND NORTHSORE RGNL** (HDC)(KHDC) 3 NE UTC-6(-5DT) N30°31.30' W90°25.10'

NEW ORLEANS

H-7D, L-21B, 22F, GOMC  
IAP, AD

46 B TPA—1002(956) NOTAM FILE DRI

**RWY 13-31:** H6502X100 (ASPH-CONC) S-22, D-33 MIRL

**RWY 13:** REIL. PAPI(P4L)—GA 3.3° TCH 50'.

**RWY 31:** REIL. PAPI(P4L)—GA 3.3° TCH 56'. Thld dspcd 690'. Trees.

**RWY 18-36:** H5001X150 (CONC) S-27, D-41 MIRL

**RWY 18:** MALSR. PAPI(P4L)—GA 3.0° TCH 52'.

**RWY 36:** REIL. PAPI(P4L)—GA 3.0° TCH 52'.

**SERVICE:** S4 **FUEL** 100LL, JET A **LGT** Actvt MALSR Rwy 18; REIL Rwy 13, 31, and 36; MIRL Rwy 13-31 and 18-36; preset low instst dusk-dawn; to incr instst—CTAF. Rwy 31 right side REIL OTS.

**AIRPORT REMARKS:** Attended Mon-Fri 1200-0200Z†, Sat-Sun 1400-0000Z†. Birds, deer and coyotes on and invof arprt. Pilots conducting EFVS ops; be aware LED ALS in use. Mil and govt acft serviced at NW apron at FBO. Rwy 18-36 all safety areas NSTD. Twy D unmrk and unlgtd.

**AIRPORT MANAGER:** 985-277-5667

**WEATHER DATA SOURCES:** AWOS-3PT (985) 277-5670

**COMMUNICATIONS:** CTAF 120.575 ATIS 118.325

® **NEW ORLEANS APP/DEP CON** 119.3

**TOWER** 120.575 (1400-0000Z†) **GND CON** 119.85

**CLNC DEL** 119.3 (when twr closed)

**CLEARANCE DELIVERY PHONE:** For CD when ATCT is clsd ctc MSY Apch at 504-471-4350 or 119.3.

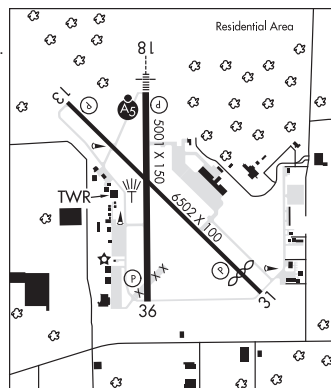
**AIRSPACE:** CLASS D svc 1400-0000Z†; other times CLASS G.

**RADIO AIDS TO NAVIGATION:** NOTAM FILE MSY.

**RESERVE (L) (L) VORW/DME** 110.8 RQR Chan 45 N30°05.25' W90°35.32' 017° 27.5 NM to fld. 5/2E.

**ANGER NDB (LOMW)** 212 HP N30°36.38' W90°25.27' 178° 5.1 NM to fld. 94/OE. NOTAM FILE DRI.

**ILS** 111.5 I-HPF Rwy 18. Class ID. LOM ANGER NDB. ILS and LOM unmonitored.



**HARRY P WILLIAMS MEML** (See PATTERSON on page 122)

**HART** (See MANY on page 112)

**HARVEY** N29°51.01' W90°00.18' NOTAM FILE NEW.

NEW ORLEANS

(VH) (H) **VORTACW** 114.1 HRV Chan 88 351° 11.6 NM to Lakefront. 2/2E.

H-7E, 8F, L-21B, 22F, GOMC

VOR unusable:

000°-014° byd 40 NM

015°-025° byd 40 NM blo 18,000'

026°-050° byd 40 NM

040°-060° byd 34 NM blo 2,500'

051°-068° byd 40 NM blo 3,500'

051°-068° byd 66 NM

069°-252° byd 40 NM

253°-263° byd 40 NM blo 17,000'

264°-296° byd 40 NM

270°-280° byd 28 NM blo 4,000'

270°-280° byd 35 NM blo 5,000'

297°-307° byd 40 NM blo 18,000'

308°-359° byd 40 NM

325°-330° byd 28 NM blo 3,000'

TACAN AZIMUTH unusable:

040°-060° byd 24 NM blo 2,500'

DME unusable:

040°-060° byd 34 NM blo 2,500'

070°-090° blo 2,400'

070°-090° byd 26 NM blo 3,400'