

NEW IBERIA

ACADIANA RGNL (ARA)(KARA) 4 NW UTC-6(-5DT) N30°02.27' W91°53.03'

24 B LRA ARFF Index—See Remarks NOTAM FILE ARA

RWY 17-35: H8002X200 (CONC-GRVD) D-105, 2S-133, 2D-163,
2D/2D2-400 PCN 39 R/B/W/T HIRL

RWY 17: ODALS. PAPI(P4L)—GA 3.0° TCH 51'.

RWY 35: MALSR. PAPI(P4L)—GA 3.0° TCH 52'. Rgt tfc.

RUNWAY DECLARED DISTANCE INFORMATION

RWY 17: TORA-8002 TODA-8002 ASDA-8002 LDA-8002

RWY 35: TORA-8002 TODA-8002 ASDA-8002 LDA-8002

SERVICE: S2 FUEL 100LL, JET A OX 4 LGT When ATCT clsd HIRL
Rwy 17-35 preset low intst. To incr intst—CTAF. MALSR Rwy 35 on
consly. ACTVT seaway edge lgts Rwy 17W-35W-122.7 3 clicks on 7
clicks off.

AIRPORT REMARKS: Attended 1300-0300Z†. For fuel after hrs call
337-367-1401, FAX 337-367-1404. Seaplane landing area (water
channel) W of and adjacent/parallel to runway. Bird activity on and
invol arpt. Class IV, ARFF Index A. ARFF Index B btn 0200Z† and
1030Z† Mon thru Fri. PPR for more than 30 psgr seats call AMGR
337-365-7202 (M-F 1430-2230Z†). Rotor wing movement and
landing area between the rwy and seaway. Intensive helicopter
training. Compass rose not avbl. No overnight camping.

AIRPORT MANAGER: (337) 365-7202

WEATHER DATA SOURCES: ASOS 133.325 (337) 365-0128.

COMMUNICATIONS: CTAF 125.0 UNICOM 122.95

Ⓡ **LAFAYETTE APP/DEP CON** 121.1 (1130-0430Z†)

HOUSTON CENTER APP/DEP CON 126.35 (0430-1130Z†)

TOWER 125.0 (1200-0300Z†) **GND CON** 121.7 **CLNC DEL** 121.7

LAFAYETTE CLNC DEL 118.05 (When twr clsd)

CLEARANCE DELIVERY PHONE: For CD when Apch clsd ctc Houston ARTCC at 281-230-5622.

AIRSPACE: CLASS D svc 1200-0300Z†; other times CLASS G.

RADIO AIDS TO NAVIGATION: NOTAM FILE LFT.

LAFAYETTE (L) (L) VORTAC 109.8 LFT Chan 35 N30°11.63' W91°59.55' 146° 10.9 NM to fld. 36/3E.

TACAN AZIMUTH unusable:

295°-320° blo 4,000'

ILS/DME 108.9 I-ARA Chan 26 Rwy 35. Class IE.

WATERWAY 17W-35W: 5000X150 (WATER) MIRL

WATERWAY 17W: Rgt tfc.

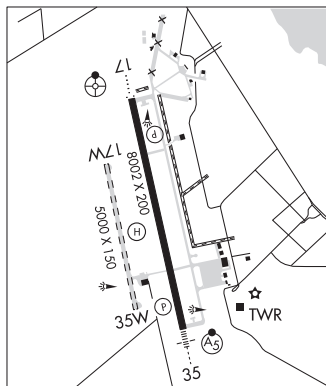
RUNWAY DECLARED DISTANCE INFORMATION

RWY 17W: TORA-5000 TODA-5000 ASDA-5000 LDA-5000

RWY 35W: TORA-5000 TODA-5000 ASDA-5000 LDA-5000

SEAPLANE REMARKS: Waterway 17-35 NSTD seaway edge lgts green, thld lgts amber. ACTIVATE seaway edge lgts Waterway
17-35—122.7. 3 clicks on 7 clicks off.

HELIPAD H1: 23X23 (DECK)



HOUSTON

**H-7D, L-21B, 22E, GOMC
IAP, AD**