

MC ALLEN INTL (MFE)(KMFE) 2 S UTC-6(-5DT) N26°10.55' W98°14.32'

107 B AOE Class I, ARFF Index C NOTAM FILE MFE

RWY 14-32: H7120X150 (ASPH-GRVD) S-90, D-190, 2D-280

PCR 880 F/AX/T HIRL

RWY 14: MALSR. Thld dsplcd 137'. Road.**RWY 32:** REIL. VASI(V2L)—GA 3.0° TCH 53'.**RWY 18-36:** H2639X60 (ASPH) S-12.5 PCR 330 F/C/X/T MIRL
0.3% up N**RWY 18:** PAPI(P2L)—GA 4.0° TCH 35'. Pole.**RUNWAY DECLARED DISTANCE INFORMATION****RWY 14:** TORA-7120 TODA-7120 ASDA-7120 LDA-6983**RWY 18:** TORA-2638 TODA-2638 ASDA-2638 LDA-2638**RWY 32:** TORA-7120 TODA-7120 ASDA-7120 LDA-7120**RWY 36:** TORA-2638 TODA-2638 ASDA-2638 LDA-2638**SERVICE:** 54 **FUEL** 100LL, JET A **OX 3** **LGT** When ATCT clsd actvt
MALSR Rwy 14; HIRL Rwy 14-32; MIRL Rwy 18-36—CTAF. PAPI
Rwy 18 OTS indefly.**NOISE:** Jet or large propeller acct training prohibited (including practice
apchs; touch and go landings and practice instrument apch
procedures) due to noise abatement procedures effective
0500-1200Z±. When departing arpt fly rwy heading until reaching
1000' AGL before making procedure turn.**AIRPORT REMARKS:** Attended 1200-0601Z±. For svcs after hrs call

956-686-1774. Birds on and in/of airport (seasonal). For ARFF when ATCT clsd ctc Mc Allen arpt ops 956-681-1500.

No 180° locked wheel turns on Rwy 14-32. Rwy 18-36 not avbl for acr opns. Twy C btn Twy C2 and the apch end of
Rwy 18 not vsb fm ATCT. No acct eng run-ups on trml apn.**AIRPORT MANAGER:** 956-681-1500**WEATHER DATA SOURCES:** ASOS (956) 664-8212**COMMUNICATIONS:** CTAF 118.5 ATIS 128.5 UNICOM 122.95

RCO 122.2 (SAN ANGELO RADIO)

® VALLEY APP/DEP CON 126.55

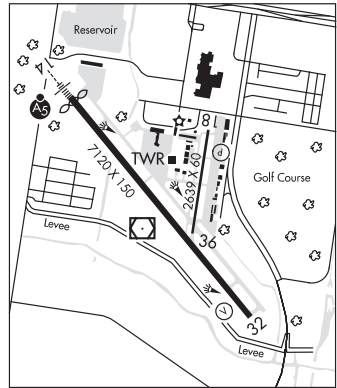
TOWER 118.5 (1200-0600Z±) **GND CON** 121.8**CLEARANCE DELIVERY PHONE:** For CD when ATCT is clsd ctc crp Apch at 361-299-4230.**AIRSPACE:** CLASS D svc 1200-0600Z±; other times CLASS E.**RADIO AIDS TO NAVIGATION:** NOTAM FILE MFE.

(H) (DH) VORW/DME 117.2 MFE Chan 119 N26°10.43' W98°14.45' at fld. 95/9E.

MISSI NDB (LOWW) 330 MF N26°15.23' W98°18.63' 136° 6.1 NM to fld. 160/4E.

ILS/DME 111.7 I-MFE Chan 54 Rwy 14. Class IE. LOM MISSI NDB. Unmonitored. DME also shared with Rwy 32.

ILS/DME 111.7 I-LLM Chan 54 Rwy 32. Class IE. DME also shared with Rwy 14.

**BROWNSVILLE**

H-7B, L-20H

IAP, AD

MC CAMEY**UPTON CO** (E48) 1 SW UTC-6(-5DT) N31°07.51' W102°13.52'

2433 B NOTAM FILE SJT

RWY 10-28: H4100X75 (ASPH) S-30 MIRL**RWY 10:** PAPI(P2L). P-line. Rgt tfc.**RWY 28:** PAPI(P2L). P-line.**SERVICE:** **LGT** MIRL Rwy 10-28 preset to low, to incr intst—CTAF.**AIRPORT REMARKS:** Unattended.**AIRPORT MANAGER:** 432-693-2321**COMMUNICATIONS:** CTAF 122.9**CLEARANCE DELIVERY PHONE:** For CD ctc Albuquerque ARTCC at 505-856-4861.**RADIO AIDS TO NAVIGATION:** NOTAM FILE FST.**FORT STOCKTON (VH) (H) VORTACW** 116.9 FST Chan 116 N30°57.13' W102°58.54' 064° 40.0 NM to fld.
2893/11E.

VOR unusable:

020°-055° byd 20 NM blo 6,900'

070°-086° byd 35 NM blo 6,400'

106°-132° byd 30 NM blo 5,900'

125°-202° byd 40 NM

203°-213° byd 40 NM blo 18,000'

214°-230° byd 40 NM

245°-255° byd 40 NM

315°-330° byd 30 NM blo 5,400'

SAN ANTONIO

L-19A

MC GREGOR EXEC (See WACO on page 444)