

**TRIGGER GAP** (17A) 5 SW UTC-6(-5DT) N36°19.70' W93°37.33'

KANSAS CITY

1650 NOTAM FILE JBR

**RWY 10-28:** 3000X75 (TURF) 1.4% up E

**RWY 10:** Tree. Rgt tfc.

**RWY 28:** Trees.

**AIRPORT REMARKS:** Unattended. Deer on and invof arpt.

**AIRPORT MANAGER:** 817-938-3334

**COMMUNICATIONS:** CTAF 122.9

**CLEARANCE DELIVERY PHONE:** For CD ctc Razorback Apch 479-649-2416, when Apch clsd ctc Memphis ARTCC at

901-368-8453/8449.

**BILL AND HILLARY CLINTON NTL/ADAMS FLD** (See LITTLE ROCK on page 61)

**BILLY FREE MUNI** (See DUMAS on page 46)

**BLYTHEVILLE**

**ARKANSAS INTL** (BYH)(KBYH) 3 NW UTC-6(-5DT) N35°57.86' W89°56.64'

MEMPHIS

254 B NOTAM FILE BYH

H-6J, L-16H

**RWY 18-36:** H11602X150 (CONC) S-155, D-235, 2D-455

IAP

HIRL(NSTD)

**RWY 36:** VASI(V4L)—GA 3.0° TCH 51'.

**SERVICE:** S5 FUEL 100LL, JET A LGT Dusk-Dawn. Actvt HIRL Rwy 18-36—CTAF. Rwy 18-36 Nstd HIRL; lctd 77' fm rwy edge and nstd dstc fm cntrln. Dpt perception problems may exist durg pds of darkness. Rwy 36 VASI OTS indefly.

**AIRPORT REMARKS:** Attended Mon-Fri 1400-2300Z. Arpt unattended holidays. Fuel avbl 24 hrs self serve with credit card (100 LL). No fee charged for svc after hrs ctc/leave msg 870-532-5628. Twy A btn Twy B and Twy D tkof and ldg avbl to mil acft.

**AIRPORT MANAGER:** 870-532-5628

**COMMUNICATIONS:** CTAF/UNICOM 122.7

Ⓜ MEMPHIS CENTER APP/DEP CON 134.65

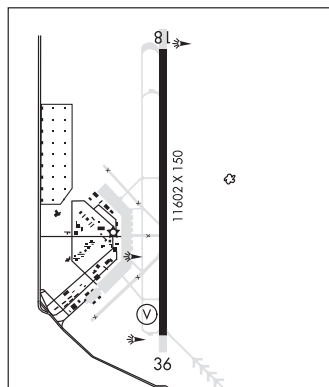
**CLEARANCE DELIVERY PHONE:** For CD ctc Memphis ARTCC at

901-368-8453/8449.

**RADIO AIDS TO NAVIGATION:** NOTAM FILE DYR.

**DYERSBURG (L) TACAN** Chan 115 DYR (116.8) N36°01.11' W89°19.06' 261° 30.7 NM to fld. 389/3E.

**ILS/DME** 110.3 I-BYH Chan 40 Rwy 18. Class IT. Unmonitored.



**BLYTHEVILLE MUNI** (HKA)(KHKA) 3 E UTC-6(-5DT) N35°56.43' W89°49.85'

MEMPHIS

256 B TPA—See Remarks NOTAM FILE HKA

L-16H

**RWY 18-36:** H4999X75 (ASPH) S-15 MIRL

IAP

**RWY 18:** PAPI(P4L)—GA 3.0° TCH 48'.

**RWY 36:** PAPI(P4L)—GA 3.0° TCH 48'.

**SERVICE:** S2 FUEL 100LL, JET A LGT ACTIVATE MIRL Rwy 18-36—CTAF. PAPI Rwy 18 and Rwy 36 opr continuously. Wind indicator lgt temporarily OTS.

**AIRPORT REMARKS:** Attended 1330-2330Z. For arpt attendant after hours call 870-740-0798/0660. Numerous agricultural acft ops from Feb-Nov 250' AGL and below, right and left TPA.

**AIRPORT MANAGER:** 870-780-4635

**WEATHER DATA SOURCES:** ASOS 135.025 (870) 763-8206.

**COMMUNICATIONS:** CTAF/UNICOM 123.05

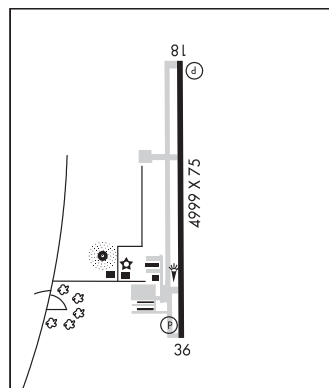
Ⓜ MEMPHIS CENTER APP/DEP CON 134.65

**CLEARANCE DELIVERY PHONE:** For CD ctc Memphis ARTCC at

901-368-8453/8449.

**RADIO AIDS TO NAVIGATION:** NOTAM FILE DYR.

**DYERSBURG (L) TACAN** Chan 115 DYR (116.8) N36°01.11' W89°19.06' 257° 25.4 NM to fld. 389/3E.



**BOONE CO** (See HARRISON on page 53)