

LITTLE ROCK

BILL AND HILLARY CLINTON NTL/ADAMS FLD (LIT)(KLIT) 2 E UTC-6(-5DT) N34°43.77'

W92°13.49'

266 B LRA Class I, ARFF Index C NOTAM FILE LIT

RWY 04L-22R: H8273X150 (CONC-GRVD) S-75, D-200, 2S-175, 2D-350 PCR 865 R/B/W/T HIRL CL

RWY 04L: MALSR. PAPI(P4L)—GA 3.0° TCH 50'. RVR-TMR Thld dsplcd 297'. Railroad.

RWY 22R: ALSF2. TDZL. PAPI(P4R)—GA 3.0° TCH 58'. RVR-TMR Rgt tfc.

RWY 04R-22L: H8251X150 (CONC-GRVD) S-75, D-200, 2S-175, 2D-350 PCR 719 R/A/W/T HIRL CL

RWY 04R: MALSR. PAPI(P4R)—GA 3.0° TCH 50'. RVR-TR Thld dsplcd 1050'. Pole. Rgt tfc.

RWY 22L: MALSF. PAPI(P4L)—GA 3.0° TCH 50'. RVR-TR Trees.

RWY 18-36: H6224X150 (CONC-GRVD) S-75, D-100, 2S-127, 2D-135 PCR 347 R/B/W/T MIRL

RWY 18: PAPI(P4L)—GA 3.0° TCH 50'. Tree.

RWY 36: PAPI(P4R)—GA 3.75° TCH 63'. Thld dsplcd 164'. Trees.

RUNWAY DECLARED DISTANCE INFORMATION

RWY 04L:TORA-8273 TODA-8273 ASDA-8273 LDA-7976

RWY 04R:TORA-8250 TODA-8250 ASDA-8250 LDA-7200

RWY 18: TORA-6060 TODA-6060 ASDA-6060 LDA-6060

RWY 22L:TORA-7200 TODA-7200 ASDA-7200 LDA-7200

RWY 22R:TORA-8273 TODA-8273 ASDA-8273 LDA-8273

RWY 36: TORA-6224 TODA-6224 ASDA-6224 LDA-6060

ARRESTING GEAR/SYSTEM

RWY 22R: EMAS

SERVICE: S4 FUEL 100LL, JET A OX 1, 3

AIRPORT REMARKS: Attended continuously. Large concentrations of birds invof arpt most activity between SR-SS up to 1500' MSL. Be alert North Little Rock Muni arpt is lctd 6 miles north-northwest with similar rwy configurations. Twy A 315' south of Twy L intersection to Rwy 36 clsd except acft with wingspan less than 79'. No general aviation parking on terminal or cargo ramp. Cargo and terminal ramps are non-movement areas. SMGCS suspended UFN. Psgr acr acft ADG-IV and HYR restricted from using Twy F btn Twy E and hngr ramp due to non-std safety area. Landing fee.

AIRPORT MANAGER: 501-372-3439

WEATHER DATA SOURCES: ASOS (501) 376-0247 LLWAS.

COMMUNICATIONS: D-ATIS 125.65 (501) 379-2915 UNICOM 122.95

LITTLE ROCK RCO 122.4 (JONESBORO RADIO)

Ⓡ LITTLE ROCK APP/DEP CON 135.4 (040°-239°) 119.5 (240°-039°)

TOWER 118.7 GND CON 121.9 CLNC DEL 118.95 PRE TAXI CLNC 118.95

PDC

CLEARANCE DELIVERY PHONE: For CD when una via freq ctc Little Rock Apch 501-379-2908 or Little Rock ATCT 501-379-2911.

AIRSPACE: CLASS C svc ctc APP CON.

RADIO AIDS TO NAVIGATION: NOTAM FILE LIT.

LITTLE ROCK (H) (H) VORTACW 113.9 LIT Chan 86 N34°40.66' W92°10.83' 320° 3.8 NM to fld. 240/5E.

TACAN AZIMUTH & DME unusable:

221°-228° byd 20 NM blo 2,800'

229°-239° byd 20 NM blo 2,500'

260°-280° byd 35 NM blo 5,000'

TACAN AZIMUTH unusable:

320°-335° byd 5 NM

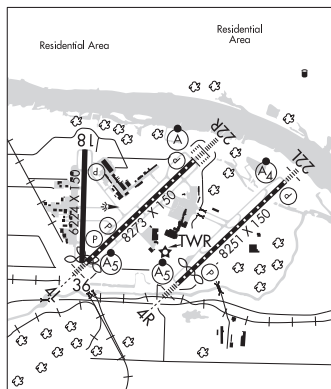
LASKY NDB (LOMW) 353 LI N34°40.14' W92°18.32' 048° 5.4 NM to fld. 248/0E.

ILS/DME 110.3 I-LIT Chan 40 Rwy 04L. Class IA. LOM LASKY NDB. DME also serves Rwy 22R. DME unusable byd 30° left and byd 15° right of course.

ILS/DME 111.3 I-CNL Chan 50 Rwy 04R. Class IA.

ILS/DME 110.7 I-BWY Chan 44 Rwy 22L. Class IB. LOC offset 1.87 degs.

ILS/DME 110.3 I-AAY Chan 40 Rwy 22R. Class IIIE. DME also serves Rwy 04L.



MEMPHIS
H-6I, L-18F
IAP, AD