

**WALNUT RIDGE RGNL** (ARG)(KARG) 4 NE UTC-6(-5DT) N36°07.48' W90°55.51'

**MEMPHIS**  
H-6J, L-16G  
IAF

279 B NOTAM FILE ARG

**RWY 04-22:** H6001X150 (ASPH) S-40, D-60, 2D-110 MIRL

**RWY 04:** MALSF.

**RWY 22:** PAPI(P4L)—GA 3.0° TCH 47'.

**RWY 13-31:** H5003X150 (CONC) S-40, D-60, 2D-110

**RWY 13:** Road.

**RWY 31:** Berm.

**RWY 18-36:** H5001X150 (CONC) S-40, D-60, 2D-110 MIRL

**RWY 18:** ODALS. REIL. Road.

**SERVICE:** S4 FUEL 100LL, JET A LGT ACTVT MALSF Rwy 04; ODALS

Rwy 18; REIL Rwy 18; MIRL Rwy 04-22, Rwy 18-36—CTAF.

**AIRPORT REMARKS:** Attended 1400-2300Z†. If arpt attendant not avbl, call 870-886-5432. Fee chrg unless prior arrangements made. 100LL and Jet A self svc fuel avbl 24 hrs with credit card/full svc avbl 1400-2300Z†. Government contract fuel avbl. Agricultural ops on and invof arpt Apr thru Sep. Migratory birds invof arpt Oct thru Jan.

**AIRPORT MANAGER:** 870-886-5432

**WEATHER DATA SOURCES:** AWOS-3PT 126.525 (870) 886-2537.

**COMMUNICATIONS:** CTAF/UNICOM 122.8

RCO 122.1R 114.5T (JONESBORO RADIO)

RCO 122.5 (JONESBORO RADIO)

Ⓡ **MEMPHIS CENTER APP/DEP CON** 120.075

**CLEARANCE DELIVERY PHONE:** For CD etc Memphis ARTCC at 901-368-8453/8449.

**RADIO AIDS TO NAVIGATION:** NOTAM FILE ARG.

(VH) (H) **VORTAC** 114.5 ARG Chan 92 N36°06.60' W90°57.22' 054° 1.6 NM to fld. 265/4E.

TACAN AZIMUTH unusable:

011°-021° byd 15 NM blo 5,000'

VOR unusable:

010°-021° byd 40 NM blo 3,000'

010°-021° byd 55 NM

011°-021° byd 8 NM blo 4,000'

022°-052° byd 40 NM

053°-078° byd 40 NM blo 2,300'

053°-078° byd 64 NM

079°-175° byd 40 NM blo 18,000'

195°-216° byd 40 NM blo 18,000'

217°-278° byd 40 NM blo 3,000'

217°-278° byd 61 NM blo 18,000'

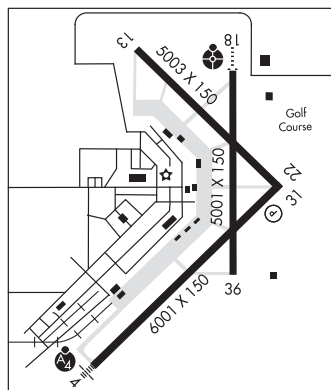
279°-350° byd 40 NM blo 3,400'

279°-350° byd 59 NM

**LAWRENCE COUNTY NDB** (MHW) 227 TNZ N36°12.42' W90°55.39' 180° 4.9 NM to fld. 262/1E. NDB unmonitored

2300-1300Z†.

LOC 111.1 I-ARG Rwy 18. LOC unmonitored 2300-1300Z†.



**WARREN MUNI** (3M9) 3 S UTC-6(-5DT) N33°33.63' W92°05.12'

**MEMPHIS**  
L-18F  
IAF

235 B NOTAM FILE JBR

**RWY 03-21:** H3829X75 (ASPH) S-4 LIRL 1.0% up NE

**RWY 03:** PAPI(P2L)—GA 3.0° TCH 40'. Trees.

**RWY 21:** PAPI(P2L)—GA 3.5° TCH 40'. Road.

**SERVICE:** FUEL 100LL LGT ACTVT LIRL and PAPI Rwy 03-21—CTAF.

Rwy 03 PAPI unusbl byd 2 degs left of cntrln. Rwy 21 PAPI unusbl byd 3 degs right and left of cntrln.

**AIRPORT REMARKS:** Unattended. Self svc fuel avbl 24 hrs with credit card.

For services call 870-226-6743 or after hrs 870-226-3703. Deer on and invof arpt. Ctc police 870-226-3703 to clear rwy.

**AIRPORT MANAGER:** 870-820-9119

**COMMUNICATIONS:** CTAF 122.9

Ⓡ **MEMPHIS CENTER APP/DEP CON** 135.875

**RADIO AIDS TO NAVIGATION:** NOTAM FILE JBR.

**MONTICELLO (L) DME** 111.6 MON Chan 53 N33°33.72'

W91°42.93' 270° 18.5 NM to fld. 208.

