

**JACKSON RGNL** (MKL)(KMKL) P (ARNG) 4 W UTC-6(-5DT) N35°35.99' W88°54.94'

**MEMPHIS**  
H-6J, L-16H  
IAP, AD

433 B ARFF Index—See Remarks NOTAM FILE MKL  
**RWY 02-20:** H6005X150 (ASPH-GRVD) S-55, D-80, 2D-125

PCR 1230 F/C/X/T HIRL 0.4% up S  
**RWY 02:** MALSR. PAPI(P4L)—GA 3.0° TCH 29'.

**RWY 20:** PAPI(P4L)—GA 3.0° TCH 47'. Tree.

**RWY 11-29:** H3539X100 (ASPH) S-27 PCN 13 F/D/X/T MIRL

**RWY 11:** PAPI(P4L)—GA 3.0° TCH 34'. Tree.

**RWY 29:** PAPI(P4L)—GA 3.0° TCH 23'. Tree.

**SERVICE:** S4 FUEL 100LL, JET A LGT When ATCT clsd ACTVT MALSR  
Rwy 02; HIRL Rwy 02-20, MIRL Rwy 11-29—CTAF. Rwy 02 PAPI  
unusl byd 8° left and right of cntrln. **MILITARY—** FUEL 100LL, A.

**AIRPORT REMARKS:** Attended Mon-Fri 1200-0230Z†, Sat-Sun  
1300-0130Z†. Aft hr—731-394-1755. Class IV, ARFF Index A. Clsd  
to unskd acr ops more than 30 pax seats exc 24 hr PPR—amgr. ACR  
ops more than 9 pax seats na in excess of 15 min bfr or aft sked arr or  
dep times w/o prior coord with amgr and CFM. PPR for gnd access to  
fld 0330-1200Z†—731-394-1755. Rwy 02-20 grvd 55' each side  
of cntrln.

**AIRPORT MANAGER:** 731-423-0995

**WEATHER DATA SOURCES:** ASOS 119.325 (731) 424-0692.

**COMMUNICATIONS:** CTAF 127.15 UNICOM 122.95

RCO 122.2 (JACKSON RADIO)

Ⓡ **MEMPHIS CENTER APP/DEP CON** 134.65

**TOWER** 127.15 (1300-0100Z†) **GND CON** 120.9

**CLEARANCE DELIVERY PHONE:** For CD ctc Memphis ARTCC at 901-368-8453/8449.

**AIRSPACE:** CLASS D svc 1300-0100Z†; other times CLASS E.

**RADIO AIDS TO NAVIGATION:** NOTAM FILE MKL.

**MC KELLAR (VL) (DH) VORW/DME** 114.85 MKL Chan 95(Y) N35°36.21' W88°54.63' at fld. 410/1W.

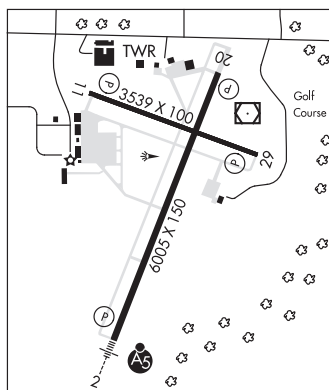
VOR unusable:

000°-041° byd 40 NM  
042°-052° byd 38 NM blo 5,100'  
043°-104° byd 40 NM  
070°-104° byd 25 NM blo 5,000'  
105°-125° byd 40 NM  
126°-205° byd 25 NM blo 5,000'  
126°-297° byd 40 NM  
232°-266° byd 25 NM blo 2,200'  
280°-290° byd 22 NM blo 5,100'  
308°-359° byd 40 NM

DME unusable:

042°-052° byd 38 NM blo 5,100'  
070°-104° byd 25 NM blo 5,000'  
105°-125°  
126°-205° byd 25 NM blo 5,000'  
232°-266° byd 25 NM blo 2,200'  
280°-290° byd 22 NM blo 5,100'

**ILS/DME** 109.1 I-MKL Chan 28 Rwy 02. Class IE.



**JAMES TUCKER** (See LINDEN on page 431)