

PELL CITY

ST CLAIR CO (PLR)(KPLR) P (AR) 3 SE UTC-6(-5DT) N33°33.53' W86°14.94'

485 B NOTAM FILE ANB

RWY 03-21: H5001X80 (ASPH) S-30 MIRL

RWY 03: PAPI(P4L)—GA 3.0° TCH 46'. Thld dspcd 230'. Tree.

RWY 21: PAPI(P4L)—GA 3.0° TCH 53'. Tree.

SERVICE: S4 **FUEL** 100LL, JET A+ **LGT** Actvt PAPI Rwy 03 and 21;
MIRL Rwy 03-21—CTAF. **MILITARY—FUEL** (NC-100LL - H24 credit card
svc avbl. After hr call C205-369-3253.)

AIRPORT REMARKS: Attended Mon-Sat 1330-2300Z†, Sun untndd. 100LL
avbl 24/7 with credit card. For A+ Jet fuel after hrs call
205-229-6668.

AIRPORT MANAGER: 205-338-9456

WEATHER DATA SOURCES: AWOS-3P 119.625 (205) 884-4359.

COMMUNICATIONS: CTAF/UNICOM 123.05

Ⓡ **BIRMINGHAM APP/DEP CON** 123.8

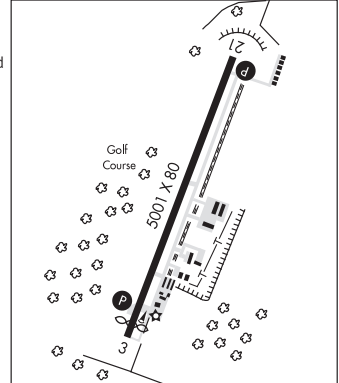
CLNC DEL 121.725

GCO 121.725 (BIRMINGHAM CLNC DEL)

RADIO AIDS TO NAVIGATION: NOTAM FILE ANB.

TALLADEGA (L) DME 108.8 TDG Chan 25 N33°34.51'
W86°02.56' 265° 10.4 NM to fld. 531.

ATLANTA
H-6K, 9A, 12F, L-181
IAP



POLK N32°16.19' W86°55.65' NOTAM FILE ANB.
NDB (MHW/LOM) 344 SE 328° 5.4 NM to Craig Fld. 235/3W.

ATLANTA
L-181

POSEY FLD (See HALEYVILLE on page 57)

PRATTVILLE/GROUBY FLD (1A9) 3 SW UTC-6(-5DT) N32°26.32' W86°30.76'

225 B NOTAM FILE ANB

RWY 09-27: H5400X100 (ASPH) S-30 MIRL 0.5% up W

RWY 09: REIL. PAPI(P4L)—GA 4.0° TCH 62'. Tree.

RWY 27: REIL. PAPI(P4L)—GA 3.0° TCH 45'. Brush.

SERVICE: **FUEL** 100LL, JET A+ **LGT** Actvt REIL Rwy 09 & 27; MIRL
Rwy 09-27—CTAF. Rwy 09 PAPI OTS indefly.

AIRPORT REMARKS: Attended 1400-2300Z†. Parachute Jumping. 100LL
and Jet A+ 24 hr credit card svc avbl. FBO phone 334-361-0060.
After hrs phone 334-730-3458.

AIRPORT MANAGER: 334-361-0060

WEATHER DATA SOURCES: AWOS-3P 118.025 (334) 358-0919.

COMMUNICATIONS: CTAF/UNICOM 122.8

Ⓡ **MONTGOMERY APP/DEP CON** 121.2 (1200-0500Z†)

Ⓡ **ATLANTA CENTER APP/DEP CON** 120.55 (0500-1200Z†)

GCO 121.725

CLEARANCE DELIVERY PHONE: For CD if una via GCO ctc Atlanta ARTCC at
770-210-7692.

RADIO AIDS TO NAVIGATION: NOTAM FILE MGM.

MONTGOMERY (VH) (H) VORTAC 112.1 MGM Chan 58 N32°13.34'
W86°19.18' 320° 16.3 NM to fld. 271/3E.

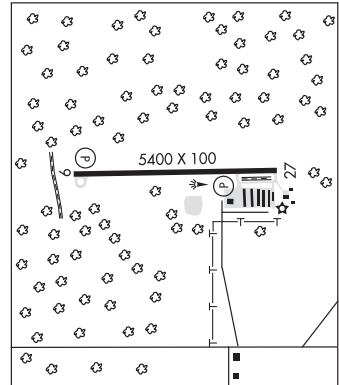
VOR unusable:

142°-146° byd 40 NM

170°-181° byd 40 NM

212°-223° byd 40 NM

ATLANTA
H-6K, 9A, 12F, L-181
IAP



PRYOR FLD RGNL (See DECATUR on page 47)