

**TUSCALOOSA NTL** (TCL)(KTCL) 3 NW UTC-6(-5DT) N33°13.24' W87°36.68'ATLANTA  
H-6K, 9A, L-18H  
IAP, AD

170 B ARFF Index—See Remarks NOTAM FILE TCL  
**RWY 04-22:** H6498X150 (ASPH-GRVD) S-120, D-250, 2D-450,  
 2D/2D2-972 PCN 50 F/D/X/T HIRL

**RWY 04:** MALSR.

**RWY 22:** PAPI(P4L)—GA 3.0° TCH 50'. Tree.

**RWY 12-30:** H4000X100 (ASPH) S-15 PCN 50 F/C/X/T MIRL  
**RWY 12:** Tree.

**RWY 30:** PAPI(P4R)—GA 3.5° TCH 73'. Trees.

**SERVICE:** S4 FUEL 100LL, JET A OX2 LGT When twr CLSD, ACTVT  
 MALSR Rwy 04; PAPI Rwy 22 and Rwy 30; HIRL Rwy 04-22 med  
 intst only; twy lgts—CTAF.

**AIRPORT REMARKS:** Attended 1100-0400Z†. Birds and deer on and in/ovf  
 arpt. Rwy 12-30 NA when twr clsd; lgtd as a visual rwy. Class IV,  
 ARFF Index A. Index B ARFF capability avbl H24. 24 hr PPR rqr for  
 unskd acr opns grtr than 30 pax seats 0330-1100Z†—ctc amgr. Rwy  
 12-30 not avbl for sked opns with more than 9 psgr seats or unskd  
 acr at least 31 psgr seats. Twy D clsd btn Twy D5 and Twy D6 when  
 twr clsd. Rwy 12-30 edge mrkgs obsc. Lndg fee.

**AIRPORT MANAGER:** 205-454-9939

**WEATHER DATA SOURCES:** ASOS 132.825 (205) 750-8940.

**COMMUNICATIONS:** CTAF 126.3 UNICOM 122.95

TUSCALOOSA RCO 122.2 (ANNISTON RADIO)

® BIRMINGHAM APP/DEP CON 120.15

TOWER 126.3 (1300-0200Z†) GND CON 121.8 CLNC DEL 120.775

**CLEARANCE DELIVERY PHONE:** For CD when twr clsd, ctc Birmingham Apch at 205-769-3890.

**AIRSPACE:** CLASS D svc 1300-0200Z†; other times CLASS G.

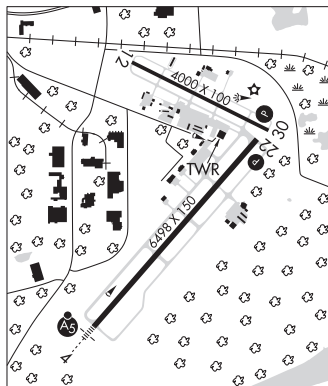
**RADIO AIDS TO NAVIGATION:** NOTAM FILE ANB.

**CRIMSON (H) TACAN** Chan 125 LDK (117.8) N33°15.53' W87°32.21' 242° 4.4 NM to fld. 365/3W.

TACAN AZIMUTH unusable:

100°-170°

ILS/DME 109.1 I-TCL Chan 28 Rwy 04. Class IB. Unmonitored when ATCT clsd.

**TUSKEGEE****MOTON FLD MUNI** (Ø6A) 3 N UTC-6(-5DT) N32°27.63' W85°40.80'ATLANTA  
H-9A, 12F, L-18I  
IAP

264 B NOTAM FILE ANB

**RWY 13-31:** H5005X100 (ASPH) S-28.5 MIRL

**RWY 13:** PAPI(P2L)—GA 3.0° TCH 30'. Trees.

**RWY 31:** PAPI(P2L)—GA 3.0° TCH 30'. Trees.

**SERVICE:** FUEL 100LL, JET A+ LGT Actvt MIRL Rwy 13-31—CTAF.  
 Pari twy lgtd full len. Rwy 13 and Rwy 31 PAPI OTS.

**AIRPORT REMARKS:** Attended 1300-2300Z†. Aft hrs—334-421-4266.  
 Parachute Jumping. Wildlife on and in/ovf arpt.

**AIRPORT MANAGER:** 334-724-0208

**COMMUNICATIONS:** CTAF/UNICOM 122.8

® ATLANTA APP/DEP CON 125.5 126.55 (1115-0400Z†)

CLNC DEL 134.25

ATLANTA CENTER APP/DEP CON 120.45 (0400-1115Z†)

**CLEARANCE DELIVERY PHONE:** For CD ctc Atlanta Apch at 678-364-6132,  
 when Apch clsd ctc Atlanta ARTCC at 770-210-7692.

**RADIO AIDS TO NAVIGATION:** NOTAM FILE ANB.

**TUSKEGEE (L) DME** 117.3 TGE Chan 120 N32°29.09'

W85°40.16' 200° 1.6 NM to fld. 488.

