

SALINAS MUNI (SNS)(KSNS) 3 SE UTC-8(-7DT) N36°39.74' W121°36.43'

SAN FRANCISCO

84 B TPA—884(800) NOTAM FILE SNS

H-3B, L-3B

RWY 08-26: H6004X150 (ASPH) S-80, D-136, 2D-244 MIRL

IAP, AD

RWY 08: VASI(V2L)—GA 3.0° TCH 53'. Thld displcd 396'. Rgt tfc.

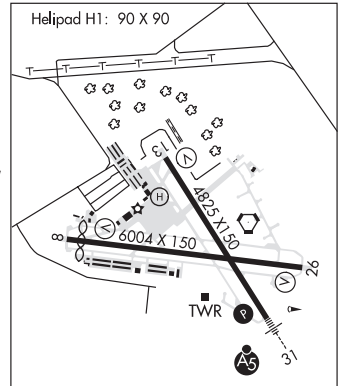
RWY 26: REIL. VASI(V2L)—GA 3.0° TCH 43'.

RWY 13-31: H4825X150 (ASPH) S-120, D-235, 2S-127, 2D-401, 2D/2D2-935 HIRL

RWY 13: REIL. VASI(V4L)—GA 3.0° TCH 50'. RVR-R Trees.

RWY 31: MALSR. PAPI(P2L)—GA 3.0° TCH 59'. RVR-T Rgt tfc.

SERVICE: S4 **FUEL** 100LL, JET A **OX** 3 **LGT** When ATCT clsd ACTVT
MALSR Rwy 31; REIL Rwy 13 and Rwy 26; PAPI Rwy 31; HIRL Rwy 13-31; MIRL Rwy 08-26, H1—CTAF. VASI Rwy 08, Rwy 13 and Rwy 26 opr consly.



AIRPORT REMARKS: Attended continuously. Portions of Twy B between D and N limited twr svc provided. 6' tall security fence 400' prior to Rwy 13 thld on centerline and steeply descending terrain 350' prior to Rwy 31 thld on centerline both in Rwy 13-31 safety area. NOTE: See Special Notices—California Condors.

AIRPORT MANAGER: 831-758-7214

WEATHER DATA SOURCES: ASOS (831) 422-2830 LAWRS.

COMMUNICATIONS: CTAF 119.525 UNICOM 123.00 ATIS 124.85

RCO 122.6 (OAKLAND RADIO)

® **NORCAL APP/DEP CON** 133.0 (001°-135° MRY)

TOWER 119.525 (1400-0300Z† Oct-Mar; 1300-0300Z† Apr-Sep) **GND CON** 121.7

CLEARANCE DELIVERY PHONE: For CD when ATCT is clsd ctc NorCal Apch at 916-361-3748.

AIRSPACE: CLASS D svc 1400-0300Z† Oct-Mar, 1300-0300Z† Apr-Sep; other times CLASS G.

RADIO AIDS TO NAVIGATION: NOTAM FILE SNS.

(VH) (H) **VORTACW** 117.3 SNS Chan 120 N36°39.83' W121°36.19' at fld. 81/17E.

VOR unusable:

010°-016° byd 22 NM blo 7,000'

010°-016° byd 26 NM blo 8,000'

016°-080° byd 22 NM blo 8,000'

109°-119° byd 40 NM blo 6,000'

109°-119° byd 58 NM

135°-250° byd 40 NM

150°-170° byd 8 NM blo 10,000'

295°-302° byd 40 NM

303°-313° byd 40 NM blo 18,000'

314°-338° byd 40 NM

339°-349° byd 40 NM blo 18,000'

350°-108° byd 40 NM

TACAN AZIMUTH unusable:

010°-080° byd 22 NM blo 8,000'

150°-200° blo 11,000'

245°-255° byd 20 NM

Aerobatic acft wi an area defined as .5 NM rds of SNS 357016.4 (5.3 NM W CVH), blo 3000', avoidance advised

SR-SS

DME unusable:

010°-080° byd 22 NM blo 8,000'

150°-200° blo 11,000'

ILS 108.5 I-SNS Rwy 31. Class IB. Unmonitored when ATCT clsd.

• • • • •
HELIPAD H1: H90X90 (ASPH-CONC-AFSC)

SALTON CITY

SALTON SEA (SAS)(KSAS) 1 SW UTC-8(-7DT) N33°14.47' W115°57.16'

LOS ANGELES

-84 TPA—716(800) NOTAM FILE SAN

RWY 07-25: 5000X75 (GRVL) S-28

RWY 07: Rgt tfc.

AIRPORT REMARKS: Unattended. Loose gravel in vicinity of parking area. Occasional ultralight activity on weekends.

AIRPORT MANAGER: (909) 429-4200

COMMUNICATIONS: CTAF 122.9

® **YUMA APP/DEP CON** 128.55

CLEARANCE DELIVERY PHONE: For CD ctc Yuma CERAP at 928-269-9569.

SALTON SEA (See SALTON CITY on page 261)