

**MONTROSE RGNL** (MTJ)(KMTJ) 1 NW UTC-7(-6DT) N38°30.59' W107°53.66'

**DENVER**  
H-3E, L-9E  
IAP, AD

5759 B Class I, ARFF Index B NOTAM FILE MTJ  
RWY 17-35: H10000X150 (ASPH-GRVD) S-75, D-190, 2D-265

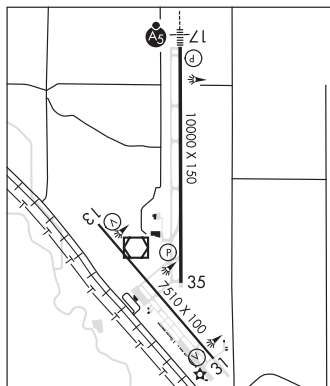
PCN 61 F/C/X/T HIRL  
RWY 17: MALSR. PAPI(P4L)—GA 3.0° TCH 55'. 0.5% up.  
RWY 35: REIL. PAPI(P4L)—GA 3.0° TCH 41'. 0.3% down.  
RWY 13-31: H7510X100 (ASPH-GRVD) S-65, D-90, 2D-150  
PCN 13 F/D/X/T HIRL 0.8% up SE  
RWY 13: VASI(V4L)—GA 3.0° TCH 43'. Tree.  
RWY 31: REIL. VASI(V4L)—GA 3.0° TCH 43'.

**RUNWAY DECLARED DISTANCE INFORMATION**

RWY 13: TORA-7510 TODA-7510 ASDA-7510 LDA-7510  
RWY 17: TORA-10000 TODA-10000 ASDA-10000 LDA-10000  
RWY 31: TORA-7510 TODA-7510 ASDA-7510 LDA-7510  
RWY 35: TORA-10000 TODA-10000 ASDA-10000 LDA-10000

**SERVICE:** S4 FUEL 100LL, JET A+ OX 1, 3 LGT ACTVT MALSR Rwy 17; REIL Rwy 31 and 35; HIRL Rwy 13-31 and 17-35—CTAF.

**AIRPORT REMARKS:** Attended Apr 1-Dec 15 1230-0400Z†, Dec 16-Mar 31 1200-0400Z†. Birds and wildlife on and invof arpt. Unsked acr ops more than 30 pax seats 24 hr PPR—amgr. Acr acs trml ramp via Twy C; oubd tfc Twy D. Ramp cnctr adj to T hngr row clsd indef; Twy E and E6 clsd exc wingspan less than 78 ft. Twy B ltd to snlg wheel max 80,000 lb; dbl wheel max 105,000 lb; dbl tand wheel max 170,000 lb. Rwy 13-31 rcmdfd for apch spd less than 121 kt. Rwy 13 preferred lndg rwy. Rwy 31 preferred tkof rwy. Rwy 17-35 rcmdfd for apch spd more than 121 kt. Rwy 17 preferred lndg rwy. Rwy 35 preferred tkof rwy.



**AIRPORT MANAGER:** 970-249-3433

**WEATHER DATA SOURCES:** ASOS 135.225 (970) 249-1534.

**COMMUNICATIONS:** CTAF/UNICOM 122.8

RCO 122.4 (DENVER RADIO)

Ⓡ DENVER CENTER APP/DEP CON 127.1

**CLEARANCE DELIVERY PHONE:** For CD, ifun to ctc on Denver ARTCC app/dep ctl freq, ctc Denver ARTCC at 303-651-4257.

**AIRSPACE:** CLASS E svc 1300-0400Z†; other times CLASS G.

**RADIO AIDS TO NAVIGATION:** NOTAM FILE MTJ.

(VH) (H) VORW/DME 117.1 MTJ Chan 118 N38°30.39' W107°53.96' at fld. 5713/12E. vDME unmonitored.

DME unusable:

011°-090° byd 26 NM blo 15,000'

190°-250° byd 25 NM blo 15,000'

VOR unusable:

001°-167° byd 40 NM

060°-090° byd 26 NM blo 16,000'

167°-178° byd 50 NM

168°-178° byd 40 NM blo 16,300'

179°-251° byd 40 NM

190°-250° byd 25 NM blo 15,000'

252°-262° byd 40 NM blo 13,000'

252°-262° byd 51 NM blo 15,500'

252°-262° byd 72 NM

263°-295° byd 40 NM

313°-360° byd 40 NM

ILS 111.3 I-MTJ Rwy 17. Unmonitored.

**MONUMENT HILL** MNH N39°13.13' W104°38.43'/7060

AWOS-3 134.375 (303) 648-3479

**DENVER**  
L-10F

**NORTH FORK VALLEY** (See PAONIA on page 364)

**NORTHERN COLORADO RGNL** (See FORT COLLINS/LOVELAND on page 344)