

PANACA

LINCOLN CO (1L1) 2 W UTC-8(-7DT) N37°47.25' W114°25.19'

LAS VEGAS  
L-9B

4831 B TPA—5631(800) NOTAM FILE RNO

RWY 17-35: H4606X60 (ASPH) S-12.5 MIRL 0.7% up N

RWY 17: Hill.

SERVICE: FUEL 100LL LGT ACTVT MIRL Rwy 17-35—CTAF.

AIRPORT REMARKS: Unattended. Rwy 17 sfc marks weathered. Rwy 35 sfc marks weathered.

AIRPORT MANAGER: (702) 449-2418

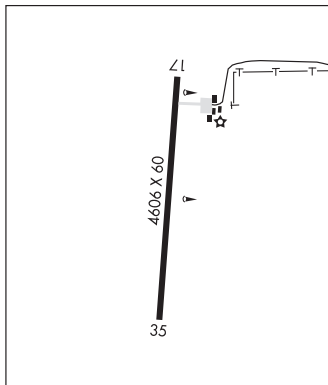
COMMUNICATIONS: CTAF/UNICOM 122.8

CLEARANCE DELIVERY PHONE: For CD ctc Nellis App at 702-652-4172.

RADIO AIDS TO NAVIGATION: NOTAM FILE RNO.

WILSON CREEK (VH) (H) VORTAC 116.3 ILC Chan 110 N38°15.01'

W114°23.65' 167° 27.8 NM to fld. 9318/16E.



PERKINS FLD (See OVERTON on page 408)

RENO

RENO/STEAD (RTS)(KRTS) P (ARNG) 10 NW UTC-8(-7DT) N39°40.09' W119°52.59'

SAN FRANCISCO  
H-3B, L-9A, 11A  
IAP, AD

5050 B TPA—See Remarks NOTAM FILE RTS MON Airport

RWY 14-32: H9000X150 (ASPH-GRVD) PCN 64 R/B/X/T HIRL

RWY 14: REIL. PAPI(P4L)—GA 3.0° TCH 40'.

RWY 32: MALSR. PAPI(P4L)—GA 3.0° TCH 39'. Thld dspldc 1200'. Rgt tfc.

RWY 08-26: H7608X150 (ASPH-GRVD) PCN 64 R/B/X/T HIRL 0.8% up E

RWY 08: REIL. PAPI(P4L)—GA 4.0° TCH 45'.

RWY 26: REIL. PAPI(P4L)—GA 3.0° TCH 46'. Rgt tfc.

RUNWAY DECLARED DISTANCE INFORMATION

RWY 08: TORA-6956 TODA-6956 LDA-6956

RWY 26: LDA-7294

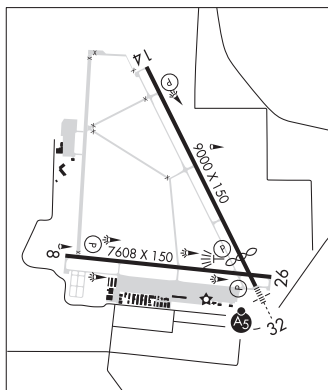
RWY 32: LDA-7800

SERVICE: S4 FUEL 100LL, JET A OX 1, 3 LGT ACTVT MALSR Rwy 32; REIL Rwy 14; HIRL Rwy 14-32—CTAF. PAPI Rwy 32 on consly. Rwy 14 PAPI OTS indefly. Rwy 08 PAPI unusbl byd 5 degs right of cntrln.

MILITARY— JASU 1(MD-3M) 2(A-1) FUEL J4 (Mil) A (avbl 1600-0030Z± Mon-Fri, C775-972-5540. OT fee \$50. Emerg svc C775-530-8743.) (NC-100LL) FLUID HPOX

AIRPORT REMARKS: Attended Mon-Fri 1500-0030Z±. Fuel avbl H24 — 775-530-7164 or 122.775. Parachute Jumping. Rng hel ops invof arpt; balloon ops NW quad; tanker and fire ops invof arpt durg fire season. TPA—6246(1200) heavy/high performance acft. Avoid overfl of housing areas east and west of afld. Cold temperature airport. Altitude correction required at or below -16C.

AIRPORT MANAGER: 775-328-6573



CONTINUED ON NEXT PAGE

## CONTINUED FROM PRECEDING PAGE

WEATHER DATA SOURCES: AWOS-3 135.175 (775) 677-0589.

COMMUNICATIONS: CTAF/UNICOM 122.7

③ NORCAL APP/DEP CON 126.3 (916-361-6874)

CLEARANCE DELIVERY PHONE: For CD ctc NorCal Apch at 916-361-0596.

RADIO AIDS TO NAVIGATION: NOTAM FILE RNO.

MUSTANG (VH) (H) VORTACW 117.9 FMG Chan 126 N39°31.88' W119°39.36' 293° 13.1 NM to fld. 5950/16E.

VOR unusable:

002°-012° byd 40 NM blo 19,000'  
 013°-022° byd 40 NM blo 10,300'  
 013°-022° byd 53 NM  
 023°-045° byd 40 NM  
 079°-113° byd 40 NM  
 114°-124° byd 40 NM blo 10,000'  
 114°-124° byd 52 NM  
 125°-145° byd 40 NM  
 153°-172° byd 40 NM blo 15,000'  
 153°-172° byd 52 NM blo 18,000'  
 173°-186° byd 40 NM  
 187°-197° byd 40 NM blo 15,000'  
 187°-197° byd 66 NM  
 198°-212° byd 40 NM  
 200°-230° byd 30 NM blo 13,000'  
 213°-223° byd 40 NM blo 18,000'  
 224°-304° byd 40 NM  
 327°-339° byd 40 NM blo 18,000'  
 356°-001° byd 40 NM

TACAN AZIMUTH unusable:

200°-230° byd 30 NM blo 13,000'

DME unusable:

200°-230° byd 30 NM blo 13,000'

ILS/DME 111.9 I-RTS Chan 56 Rwy 32. Class IT.