

LOA

WAYNE WONDERLAND (38U) 3 SE UTC-7(-6DT) N38°21.77' W111°35.76'

LAS VEGAS
H-3D, L-9C

7027 B NOTAM FILE CDC

RWY 13-31: H5693X75 (ASPH) S-16 MIRL

SERVICE: FUEL 100LL LGT ACTVT MIRL Rwy 13-31—CTAF.

AIRPORT REMARKS: Unattended. For fuel call amgr 435-836-1300.

AIRPORT MANAGER: (435) 836-1300

COMMUNICATIONS: CTAF 122.9

CLEARANCE DELIVERY PHONE: For CD ctc Salt Lake ARTCC at 801-320-2568.

RADIO AIDS TO NAVIGATION: NOTAM FILE HVE.

HANKSVILLE (VH) (H) VORTAC 115.9 HVE Chan 106 N38°25.01' W110°41.98' 251° 42.4 NM to fld.

4431/15E.

VOR unusable:

015°-025° byd 40 NM blo 18,000'

026°-065° byd 40 NM

030°-060° byd 25 NM blo 7,500'

160°-180° byd 15 NM blo 9,500'

160°-190° byd 40 NM

215°-220° byd 40 NM

221°-231° byd 40 NM blo 18,000'

232°-248° byd 40 NM

249°-259° byd 40 NM blo 16,000'

249°-259° byd 74 NM

260°-014° byd 40 NM

TACAN AZIMUTH unusable:

030°-060° byd 25 NM blo 7,500'

160°-180° byd 15 NM blo 9,500'

DME unusable:

030°-060° byd 25 NM blo 7,500'

160°-180° byd 15 NM blo 9,500'

LOGAN-CACHE (LGU)(KLGU) 3 NW UTC-7(-6DT) N41°47.51' W111°51.10'

SALT LAKE CITY

4457 B Class IV, ARFF Index A NOTAM FILE LGU

H-3D, L-11D

RWY 17-35: H9020X100 (ASPH) S-24, D-179 PCN 55 F/D/X/T HIRL

IAP, AD

RWY 17: MALSR. PAPI(P2L)—GA 3.0° TCH 45'. Railroad.

RWY 35: REIL. PAPI(P2L)—GA 3.0° TCH 39'.

RWY 10-28: H4075X60 (ASPH) S-12

RWY 28: Railroad.

RUNWAY DECLARED DISTANCE INFORMATION

RWY 10: TORA-4075 TODA-4075

RWY 17: TORA-9020 TODA-9020 ASDA-9020 LDA-9020

RWY 28: TORA-4075 TODA-4075

RWY 35: TORA-9020 TODA-9020 ASDA-9020 LDA-9020

SERVICE: S4 FUEL 100LL, JET A OX1, 2 LGT ACTVT MALSR Rwy

17; REIL Rwy 35; PAPI Rwy 17 and Rwy 35; HIRL Rwy

17-35—CTAF.

AIRPORT REMARKS: Attended 1500-0200Z±. Birds on and invof arpt spring and summer. Rwy 10-28 dalgt use only. 100LL fuel avbl H24 with credit card; aft hr—435-753-2221/435-752-5955. Flt trng invof arpt. Cold temperature airport. Altitude correction required at or below -15C.

AIRPORT MANAGER: 435-755-1750

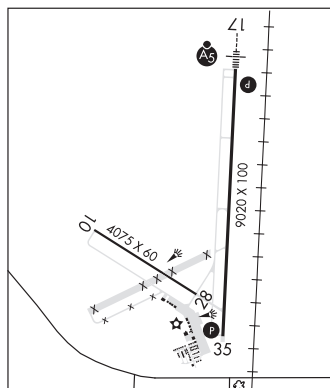
WEATHER DATA SOURCES: ASOS 135.275 (435) 752-6941.

COMMUNICATIONS: CTAF/UNICOM 122.8

FRANCIS PEAK RCO 122.2. (CEDAR CITY RADIO)

Ⓡ SALT LAKE CENTER APP/DEP CON 127.7

CLEARANCE DELIVERY PHONE: For CD ctc Salt Lake ARTCC at 801-320-2568.



CONTINUED ON NEXT PAGE

CONTINUED FROM PRECEDING PAGE

RADIO AIDS TO NAVIGATION: NOTAM FILE CDC.

BRIGHAM CITY (L) (L) VORW/DME 112.9 LHO Chan 76 N41°47.57' W112°00.59' 076° 7.1 NM to fld. 5354/14E.

VOR unusable:

- 010°-045° byd 20 NM blo 15,000'
- 045°-070° byd 20 NM blo 16,000'
- 070°-110° byd 20 NM blo 15,000'
- 110°-155° byd 15 NM blo 12,000'
- 155°-215° byd 15 NM blo 15,000'
- 155°-215° byd 20 NM
- 305°-320° byd 20 NM blo 15,000'

DME unusable:

- 010°-045° byd 20 NM blo 15,000'
- 045°-070° byd 20 NM blo 16,000'
- 070°-125° byd 20 NM blo 15,000'
- 155°-245° byd 15 NM
- 245°-320° byd 20 NM blo 15,000'

ILS/DME 109.15 I-LGU Chan 28(Y) Rwy 17. Class IE. LOC unusable byd 12° left of course. ILS is unmonitored.

LUCIN N41°21.78' W113°50.44' NOTAM FILE CDC.

SALT LAKE CITY

(VH) (H) VORTAC 113.6 LCU Chan 83 176° 39.6 NM to Wendover. 4400/17E.

H-3D, L-11C

VOR unusable:

- 057°-073° byd 40 NM blo 13,000'
- 057°-073° byd 80 NM blo 18,000'
- 074°-103° byd 40 NM
- 155°-165° byd 40 NM
- 180°-240° byd 35 NM blo 12,000'
- 185°-207° byd 40 NM
- 208°-218° byd 40 NM blo 23,000'
- 219°-229° byd 40 NM
- 230°-240° byd 40 NM blo 18,000'

TACAN AZIMUTH unusable:

- 180°-240° byd 35 NM blo 12,000'

DME unusable:

- 180°-240° byd 35 NM blo 12,000'

RCO 122.1R 113.6T (CEDAR CITY RADIO)

MANILA (4ØU) 2 E UTC-7(-6DT) N40°59.18' W109°40.71'

SALT LAKE CITY

6179 B NOTAM FILE CDC

H-3E, L-9D, 11D

RWY 07-25: H5305X60 (ASPH) S-26 MIRL 1.2% up W

RWY 07: Hill.

SERVICE: LGT Actvt MIRL Rwy 07-25—CTAF.

AIRPORT REMARKS: Unattended. Snow plowing irreg. Call for FICONS.

Drainage ditches parl to rwy, 80 ft each side of centerline.

AIRPORT MANAGER: 435-784-3218

WEATHER DATA SOURCES: AWOS-3PT 119.250 (435) 784-3123.

COMMUNICATIONS: CTAF/UNICOM 122.8

CLEARANCE DELIVERY PHONE: For CD ctc Salt Lake ARTCC at 801-320-2568.

RADIO AIDS TO NAVIGATION: NOTAM FILE VEL.

VERNAL (L) (L) VORW/DME 114.15 VEL Chan 88(Y) N40°22.73'

W109°29.60' 332° 37.4 NM to fld. 5339/15E.

VOR unusable:

- 050°-055° byd 30 NM blo 16,000'
- 200°-252° byd 17 NM

DME unusable:

- 044°-082° byd 30 NM blo 16,000'
- 175°-265° byd 15 NM
- 323°-346° byd 35 NM blo 14,500'

