

VOR ABI 113.7 Chan 84	APP CRS 105°	Rwy Idg TDZE Apt Elev N/A N/A 1791
---	------------------------	--

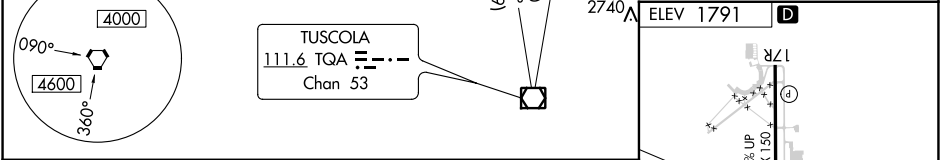
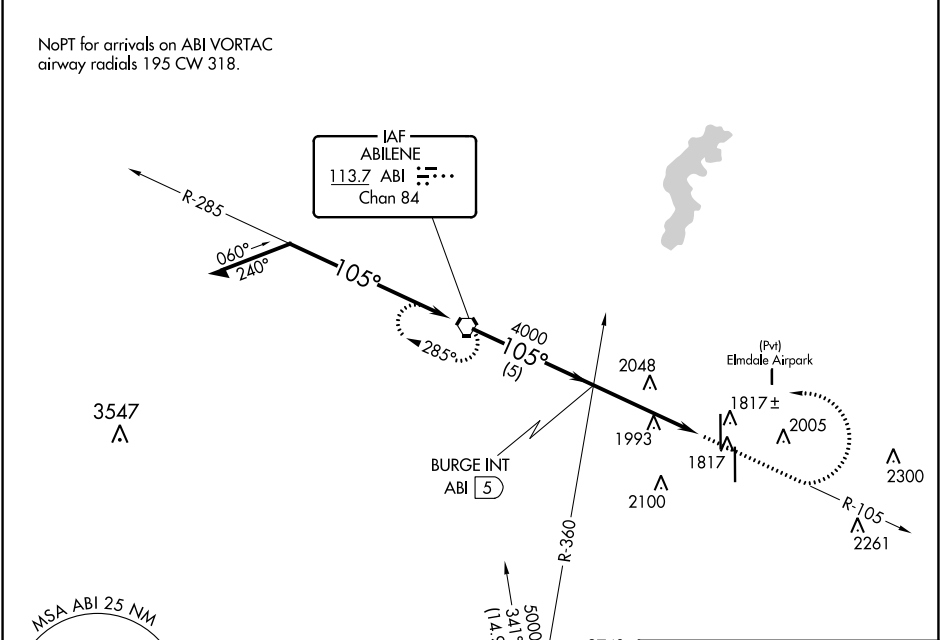
VOR or GPS-A

ABILENE RGNL (ABI)

MISSED APPROACH: Climb to 3000, then dimbing left turn to 5000 direct ABI VORTAC and hold.

ATIS 118.25	ABILENE APP CON 125.0 338.3 (EAST) 127.2 282.3 (WEST)	ABILENE TOWER 120.1 257.8	GND CON 121.7 348.6
-----------------------	---	-------------------------------------	-------------------------------

NoPT for arrivals on ABI VORTAC
airway radials 195 CW 318.



CATEGORY	A	B	C	D	FAF to MAP 4.3 NM					
	2300-1 509 (600-1)	2320-1 529 (600-1)	2420-1¾ 629 (700-1¾)	2460-2 669 (700-2)	Knots	60	90	120	150	180
CIRCLING					Min:Sec	4:18	2:52	2:09	1:43	1:26

ABILENE, TEXAS Amdt 8B 23APR20	32°25'N-99°41'W	ABILENE RGNL (ABI) VOR or GPS-A
-----------------------------------	-----------------	------------------------------------

SC-2, 26 DEC 2024 to 23 JAN 2025

SC-2, 26 DEC 2024 to 23 JAN 2025