

SW-1, 26 DEC 2024 to 23 JAN 2025

D-ATIS 118.0 257.7
CLNC DEL 119.2 259.3
GND CON 121.9 348.6
ALBUQUERQUE TOWER 120.3 351.9
ALBUQUERQUE DEP CON 123.9 354.1

DEPARTURE ROUTE DESCRIPTION

TAKEOFF RUNWAY 21: Climb heading 214° to 5860, then climb direct JETOK, cross JETOK at or below 9000, then on track 203° to cross BOSQE at or above 10000, thence. . . .

TAKEOFF RUNWAY 26: Climb heading 259° to 5860, then climbing left turn direct JETOK, cross JETOK at or below 9000, then on track 203°, cross BOSQE at or above 10000, thence. . . .

. . . . (transition). Maintain FL200. Expect filed altitude 10 minutes after departure.

LAMSE TRANSITION (BOSQE3.LAMSE)

SAINT JOHNS TRANSITION (BOSQE3.SJN)

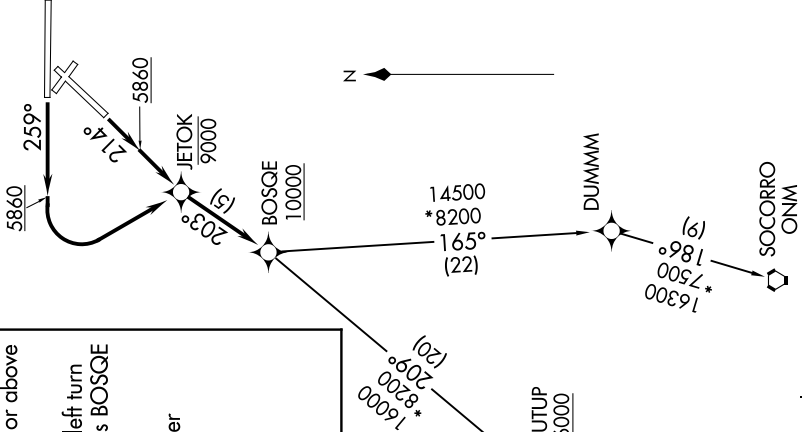
SOCORRO TRANSITION (BOSQE3.ONM)

TAKEOFF MINIMUMS:

Rwy 21: Standard with minimum climb of 500' per NM to 6000, then minimum climb of 478' per NM to 12400.

Rwy 26: Standard with minimum climb of 500' per NM to 6000, then minimum climb of 373' per NM to 13300.

**TOP ALTITUDE:
FL200**



NOTE: Chart not to scale.

SW-1, 26 DEC 2024 to 23 JAN 2025

NOTE: DME/DME/IRU or GPS required.

NOTE: For turbojet aircraft only.

NOTE: RNAV 1.

NOTE: RADAR required for non-GPS equipped aircraft.

NOTE: If unable to accept climb gradient, advise ATC on initial contact.

NOTE: For non-GPS equipped aircraft on: ONM Transition: ONM, ABQ and CNX DME's must be operational.

NOTE: For non-GPS equipped aircraft on: SJN Transition: ONM and ABQ DME's must be operational.