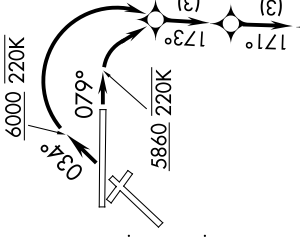
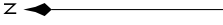


MNZNO THREE DEPARTURE (RNAV)

D-ATIS
118.0 257.7
CLNC DEL
119.2 259.3
CPDIC
GND CON
121.9 348.6
ALBUQUERQUE TOWER
120.3 351.9
ALBUQUERQUE DEP CON
123.9 354.1

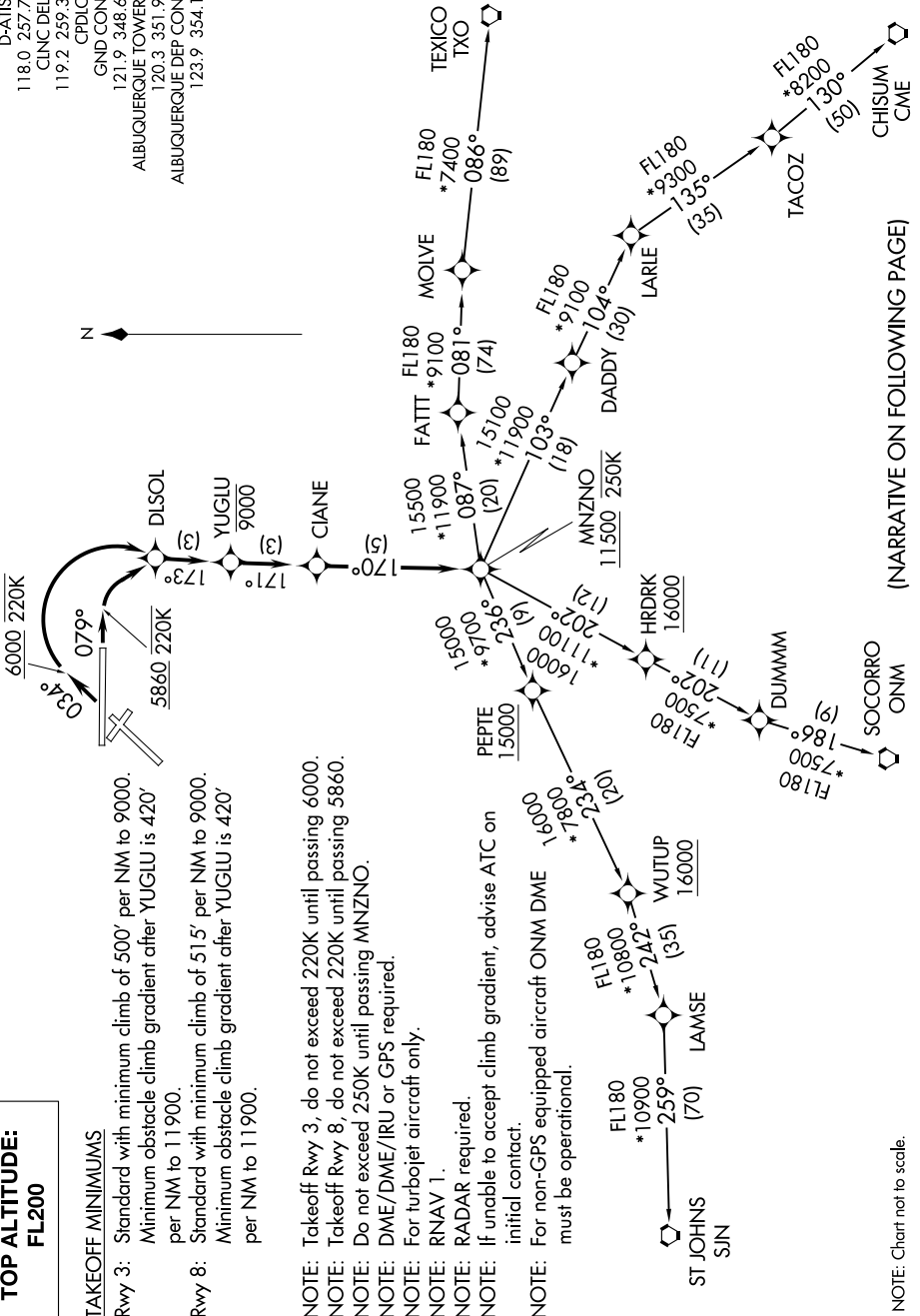


TOP ALTITUDE:
FL200

TAKEOFF MINIMUMS

Rwy 3: Standard with minimum climb of 500' per NM to 9000.
Minimum obstacle climb gradient after YUGLU is 420' per NM to 11900.
Rwy 8: Standard with minimum climb of 515' per NM to 9000.
Minimum obstacle climb gradient after YUGLU is 420' per NM to 11900.

NOTE: Takeoff Rwy 3, do not exceed 220K until passing 6000.
NOTE: Takeoff Rwy 8, do not exceed 220K until passing 5860.
NOTE: Do not exceed 250K until passing MNZNO.
NOTE: DME/DME/IRU or GPS required.
NOTE: For turbojet aircraft only.
NOTE: RNAV 1.
NOTE: RADAR required.
NOTE: If unable to accept climb gradient, advise ATC on initial contact.
NOTE: For non-GPS equipped aircraft ONM DME must be operational.



(NARRATIVE ON FOLLOWING PAGE)

NOTE: Chart not to scale.

MNZNO THREE DEPARTURE (RNAV)