

APP CRS 214°	Rwy Idg 10000
	TDZE 5316
	Apt Elev 5355

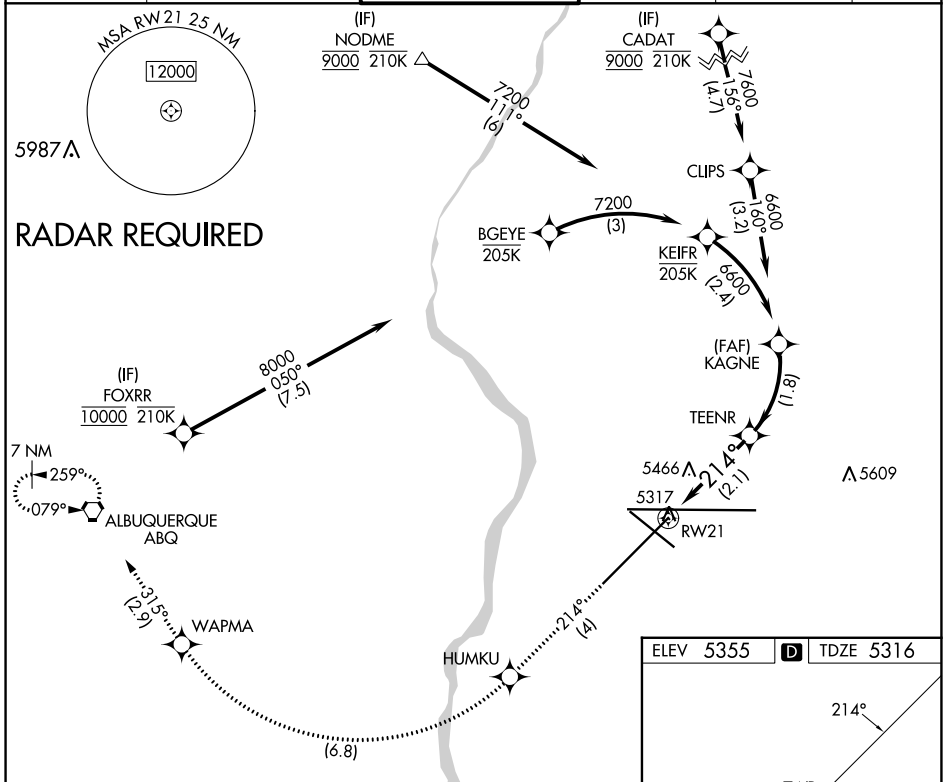
RNAV (RNP) Y RWY 21

ALBUQUERQUE INTL SUNPORT (ABQ)

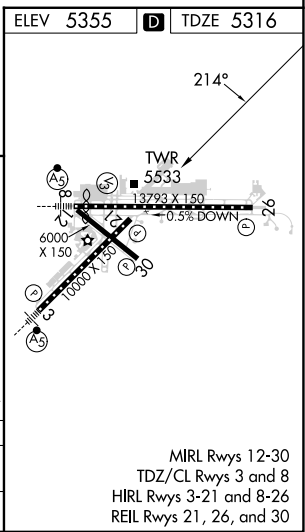
ASR For uncompensated Baro-VNAV systems, procedure NA below -12°C (11°F) or above 47°C (116°F). RF Required. GPS Required.

MISSED APPROACH: Climb to 8000 on track 214° to HUMKU, right turn to WAPMA, then on track 315° to ABQ VORTAC and hold.

D-ATIS 118.0 257.7	ALBUQUERQUE APP CON 123.9 354.1	ALBUQUERQUE TOWER 120.3 351.9	GND CON 121.9 348.6	CLNC DEL 119.2 259.3	CPDLC
------------------------------	---	---	-------------------------------	--------------------------------	-------



8000 fr 214°	HUMKU	WAPMA	fr 315°	ABQ	KAGNE
See planview for multiple IF locations.					
RW21		TEENR		KAGNE	
2.1 NM		6030		6600	
VGSi and RNAV glidepath not coincident (VGSi Angle 3.00/TCH 74).				GP 3.00° TCH 55	
1.8 NM					



CATEGORY	A	B	C	D
RNP 0.30 DA		5758-1½	442 (500-1½)	

AUTHORIZATION REQUIRED

MIRL Rwy 12-30
TDZ/CL Rwy 3 and 8
HIRL Rwy 3-21 and 8-26
REIL Rwy 21, 26, and 30

SW-1, 26 DEC 2024 to 23 JAN 2025

SW-1, 26 DEC 2024 to 23 JAN 2025