

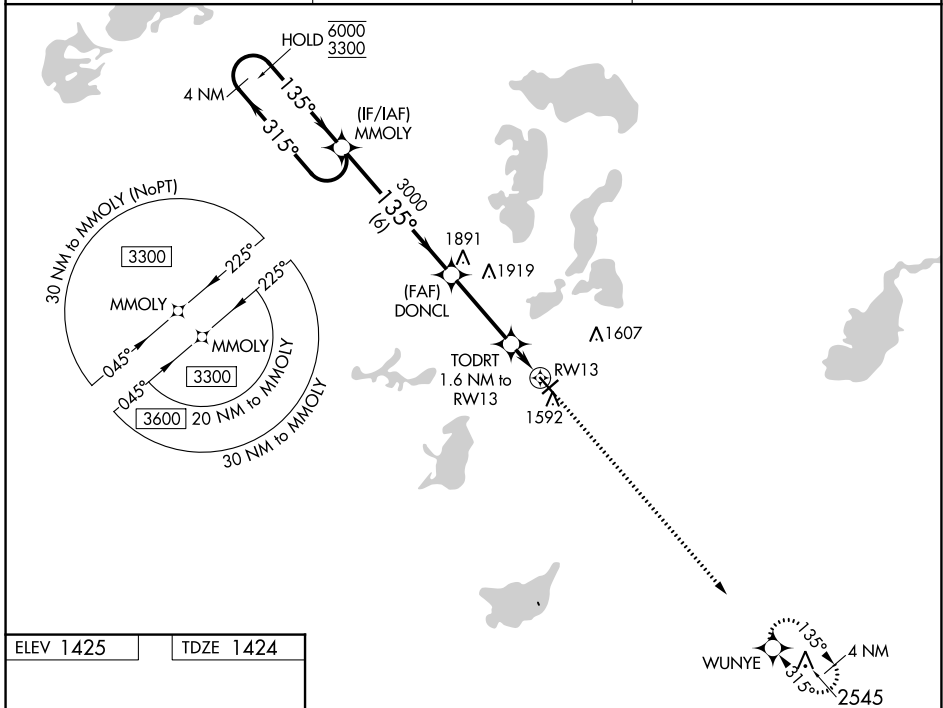
WAAS CH 50245 W13A	APP CRS 135°	Rwy Idg TDZE Apt Elev	5099 1424 1425
--	------------------------	-----------------------------	---

RNAV (GPS) RWY 13

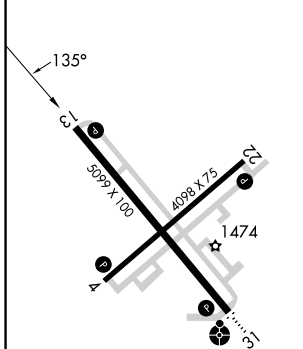
ALEXANDRIA RGNL/CHANDLER FLD (A.XN)

RNP APCH - GPS.	MISSED APPROACH: Climb to 3600 direct WUNYE and hold.
<p>▼ For uncompensated Baro-VNAV systems, LNAV/VNAV NA below -24°C or above 54°C.</p>	

ASOS 118.375	MINNEAPOLIS CENTER 126.1 269.2	UNICOM 123.0 (CTAF) 0
------------------------	--	---------------------------------



ELEV 1425	TDZE 1424
-----------	-----------



REIL Rws 4, 13, and 22 0
MIRL Rws 4-22 and 13-31 0

4 NM Holding Pattern	MMOLY	VGSI and RNAV glidepath not coincident (VGSI Angle 3.00/TCH 34).	3600 WUNYE
6000 3300	← 315° 135° →	3000	DONCL
GP 3.00° TCH 40		1960	TODRT 1.6 NM to RW13
	← 6 NM	← 3.3 NM	← 1.6 NM
CATEGORY	A	B	C
LPV DA		1674-1	250 (300-1)
LNAV/VNAV DA		1721-1	297 (300-1)
LNAV MDA		1800-1	376 (400-1)
CIRCLING	1900-1	475 (500-1)	1940-1½ 515 (600-1½)
			2000-2 575 (600-2)

NC-1, 26 DEC 2024 to 23 JAN 2025

NC-1, 26 DEC 2024 to 23 JAN 2025