

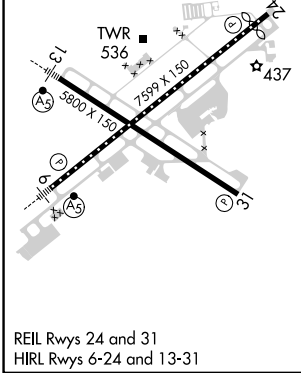
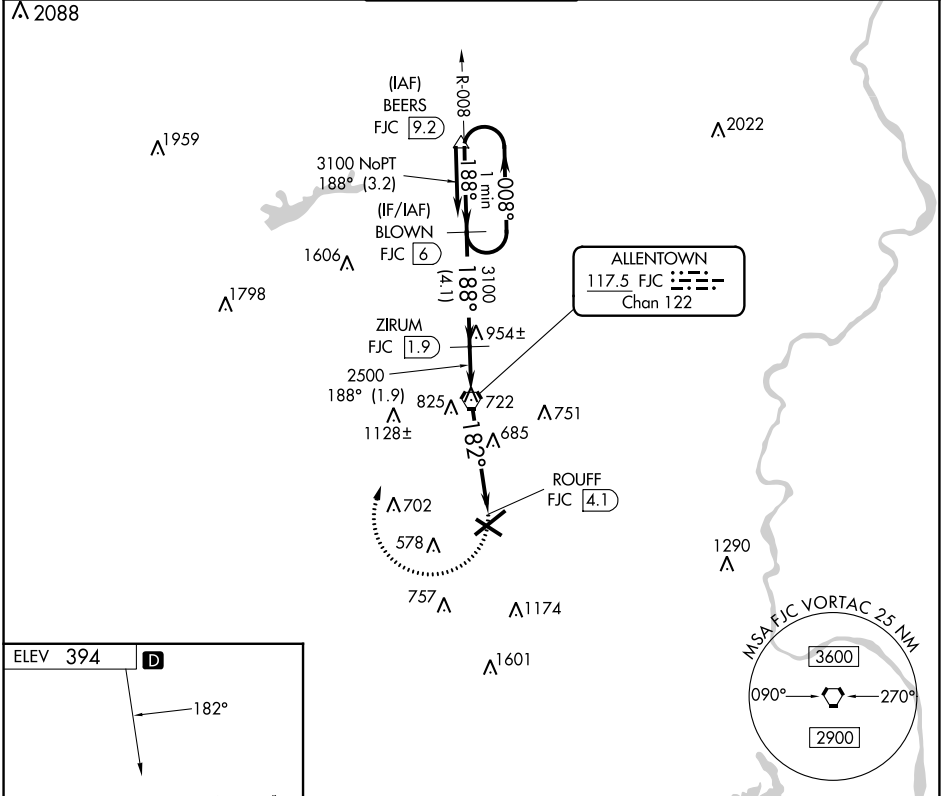
VORTAC FJC <b>117.5</b> Chan <b>122</b>	APP CRS <b>182°</b>	Rwy Idg TDZE Apt Elev	<b>N/A</b> <b>N/A</b> <b>394</b>
---	------------------------	-----------------------------	--

# TACAN-C

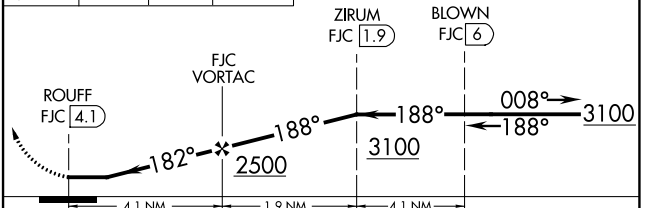
LEHIGH VALLEY INTL (ABE)

<p><b>▽</b> <b>▲</b> NA</p>		<p>MISSED APPROACH: Climbing right turn to 3100 direct FJC VORTAC then via FJC R-008 to BLOWN/6 DME and hold.</p>		
---------------------------------	--	---	--	--

ATIS <b>126.975</b>	ALLENTOWN APP CON <b>119.65 124.45 351.8</b>	ALLENTOWN TOWER <b>120.5 257.95</b>	GND CON <b>121.9 257.95</b>	CLNC DEL <b>124.05 257.95</b>
------------------------	---	--	--------------------------------	----------------------------------



3100	FJC	FJC	BLOWN	One Minute Holding Pattern
	◻	R-008	FJC (6)	



CATEGORY	A	B	C	D
<b>■</b> CIRCLING	940-1	546 (600-1)	1180-2¼ 786 (800-2¼)	1600-3 1206 (1300-3)

NE-4, 26 DEC 2024 to 23 JAN 2025

NE-4, 26 DEC 2024 to 23 JAN 2025