

LOC I-MZX 111.75	APP CRS 172°	Rwy Idg 8001
		TDZE 146
		Apt Elev 146

ILS or LOC RWY 17

AUGUSTA RGNL AT BUSH FLD (AGS)

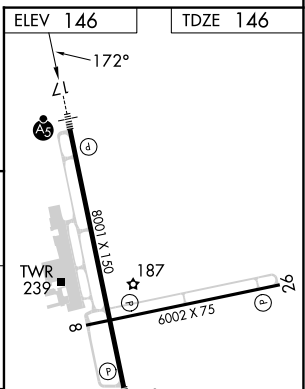
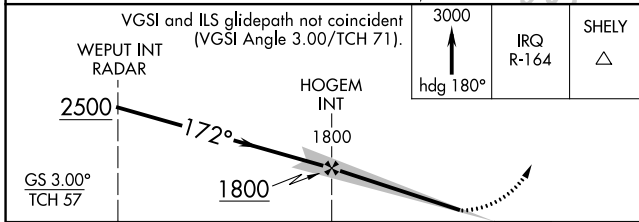
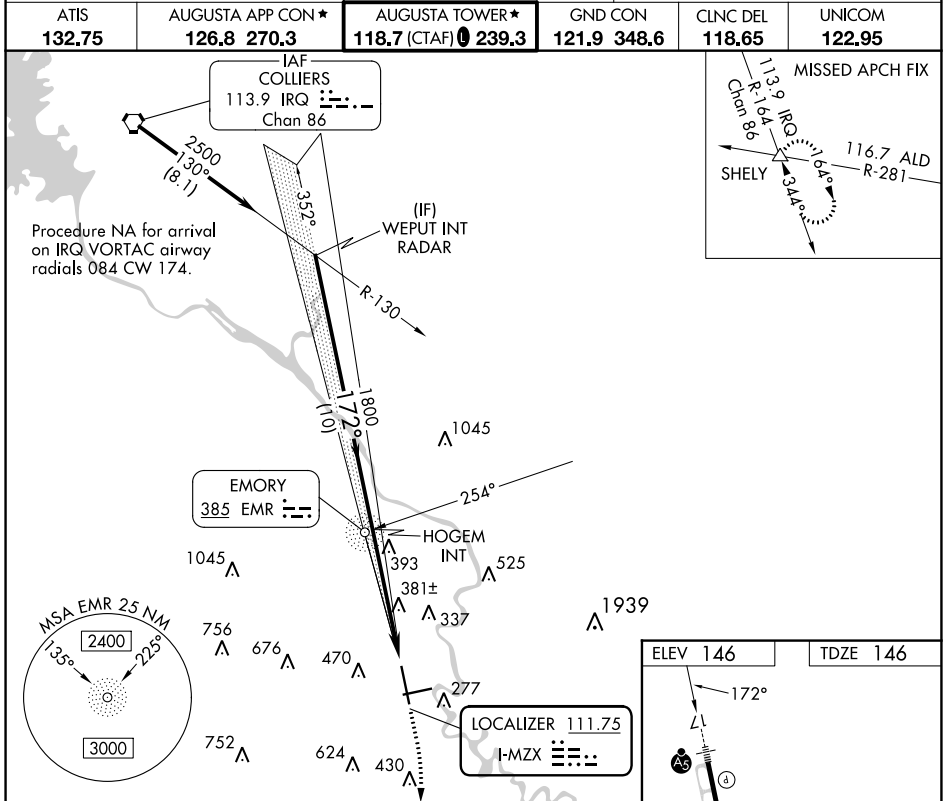
ADF required for LOC only.

MALSR



MISSED APPROACH: Climb to 3000 on heading 180° and IRQ VORTAC R-164 to SHELY INT and hold.

ATIS 132.75	AUGUSTA APP CON ★ 126.8 270.3	AUGUSTA TOWER ★ 118.7 (CTAF) 0 239.3	GND CON 121.9 348.6	CLNC DEL 118.65	UNICOM 122.95
-----------------------	-----------------------------------------	------------------------------------------------	-------------------------------	---------------------------	-------------------------



WEPUT INT RADAR	3000				IRQ R-164	SHELY
GS 3.00° TCH 57	hdg 180°					
	10 NM		5 NM			
CATEGORY	A	B	C	D		
S-ILS 17	351/24 205 (300-½)					
S-LOC 17	640/24	494 (500-½)	640/50	494 (500-1)		
CIRCLING	780-1	634 (700-1)	780-1¾ 634 (700-1¾)	940-2½ 794 (800-2½)		
	FAF to MAP 5 NM					
	Knots	60	90	120	150	180
	Min:Sec	5:00	3:20	2:30	2:00	1:40

SE-4, 26 DEC 2024 to 23 JAN 2025

SE-4, 26 DEC 2024 to 23 JAN 2025