

(RDBUD4.RDBUD) 21168

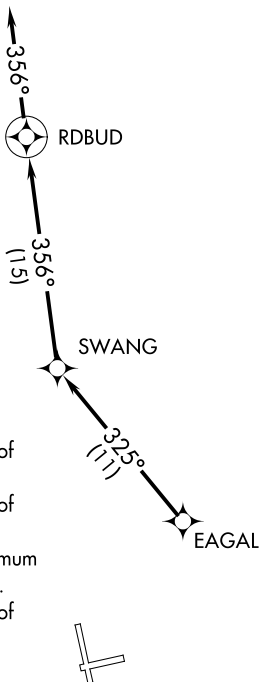
AL-27 (FAA)

AUGUSTA RGNL AT BUSH FLD (AGS)  
AUGUSTA, GEORGIA

# RDBUD FOUR DEPARTURE (RNAV)

AUGUSTA DEP CON \*  
126.8 270.3  
CLNC DEL  
118.65  
AUGUSTA TOWER \*  
118.7 (CTAF) 239.3

**TOP ALTITUDE:  
ASSIGNED BY ATC**



### TAKEOFF MINIMUMS

- Rwy 8: Standard with minimum climb of 394' per NM to 2500.
- Rwy 17: Standard with minimum climb of 265' per NM to 2400.
- Rwy 26: 300-1¾ or standard with minimum climb of 312' per NM to 2000.
- Rwy 35: Standard with minimum climb of 302' per NM to 2500.

- NOTE: DME/DME/IRU or GPS required.
- NOTE: RADAR required.
- NOTE: RNAV 1.
- NOTE: For Prop aircraft only during Masters golf tournament week.
- NOTE: Do not exceed 250K until advised by ATC.

NOTE: Chart not to scale.

SE-4, 26 DEC 2024 to 23 JAN 2025

SE-4, 26 DEC 2024 to 23 JAN 2025



## DEPARTURE ROUTE DESCRIPTION

TAKEOFF RUNWAYS 8, 17, 26, 35: Climb heading assigned by ATC for vectors to EAGAL. Then on depicted route to RDBUD, then on heading 356° for RADAR vectors, thence. . . .

. . . .maintain altitude assigned by ATC. Expect clearance to filed altitude/flight level within 10 minutes after departure.

# RDBUD FOUR DEPARTURE (RNAV)

(RDBUD4.RDBUD) 28FEB19

AUGUSTA, GEORGIA  
AUGUSTA RGNL AT BUSH FLD (AGS)