

VORTAC IRQ 113.9 Chan 86	APP CRS 161°	Rwy Idg TDZE Apt Elev	N/A N/A 422
--	------------------------	-----------------------------	--

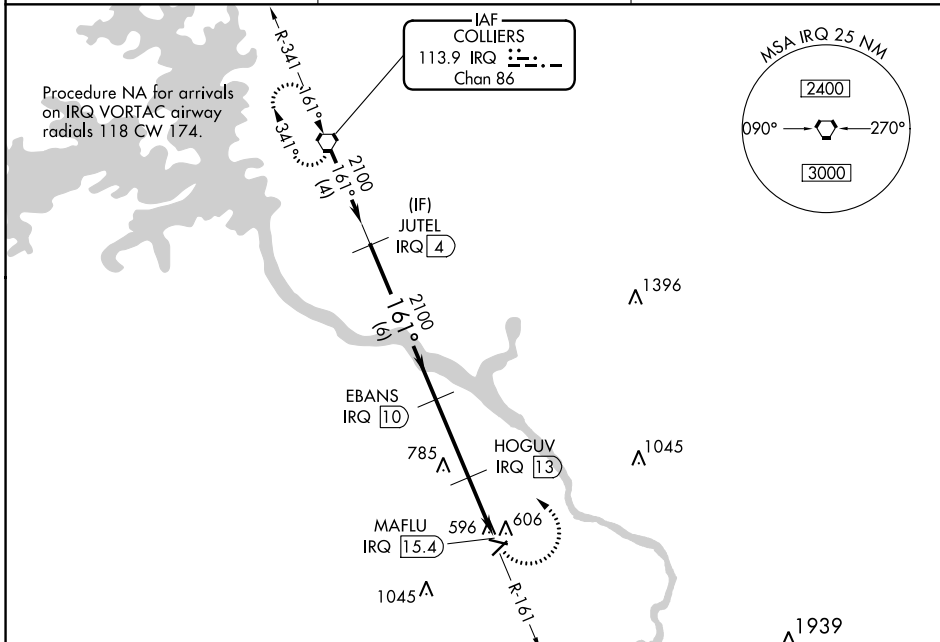
VOR/DME-B

DANIEL FLD (DNL)

⚠ When local altimeter setting not received, use Augusta Rgnl at Bush Fld altimeter setting and increase all MDA 60 feet.
⚠ Procedure NA at night. Helicopter visibility reduction below 1 SM NA.

MISSED APPROACH: Climbing left turn to 2100 direct IRQ VORTAC and hold.

ASOS 135.275	AUGUSTA APP CON ★ 126.8 270.3	UNICOM 123.05 (CTAF) 0
------------------------	---	---



Procedure Turn NA	JUTEL IRQ 4	EBANS IRQ 10	HOGUV IRQ 13	MAFLU IRQ 15.4
	2100	2100	1160	
	6 NM	3 NM	2.4 NM	
CATEGORY	A	B	C	D
C CIRCLING	920-1	498 (500-1)	1400-3	978 (1000-3)

REIL Rwy 5, 11 and 23 **0**
 MIRL Rwy 5-23 and 11-29 **0**

SE-4, 26 DEC 2024 to 23 JAN 2025

SE-4, 26 DEC 2024 to 23 JAN 2025