

APP CRS **095°**  
 Rwy Idg **3844**  
 TDZE **154**  
 Apt Elev **160**

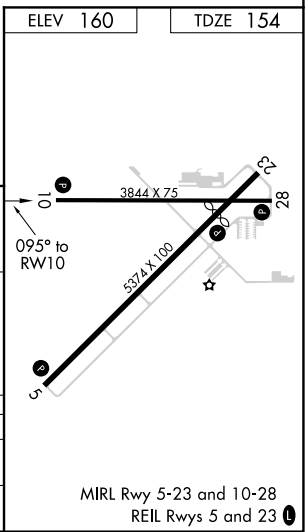
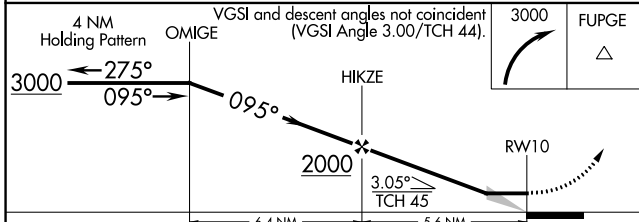
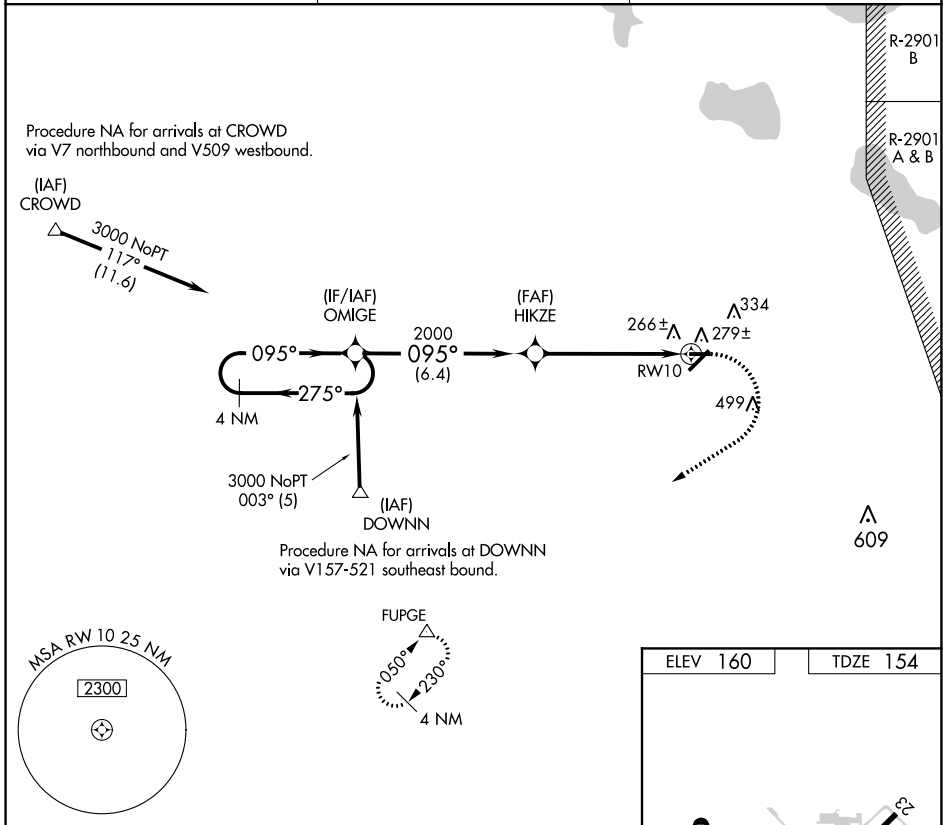
# RNAV (GPS) RWY 10

AVON PARK EXEC (AVO)

**⚠** DME/DME RNP-0.3 NA. Rwy 5,10,23,28 helicopter visibility reduction below  
**NA** 1 SM NA. When local altimeter setting not received, use Orlando Intl altimeter setting; increase all MDA 140 feet. Procedure NA at night.

MISSED APPROACH: Climbing right turn 3000 direct FUPGE and hold.

AWOS-3 **118.725**      MIAMI CENTER ★ **134.55 257.7**      UNICOM **122.8 (CTAF) 0**



CATEGORY	A	B	C	D
LNVA MDA	640-1	486 (500-1)		NA
CIRCLING	680-1 520 (600-1)	840-1 680 (700-1)		NA

SE-3, 26 DEC 2024 to 23 JAN 2025

SE-3, 26 DEC 2024 to 23 JAN 2025