


LOC/DME I-BIL <b>111.5</b> Chan <b>52</b>	APP CRS <b>102°</b>	Rwy Idg <b>10518</b> TDZE <b>3585</b> Apt Elev <b>3662</b>
---	------------------------	--

# ILS Y or LOC Y RWY 10L

BILLINGS LOGAN INTL (BIL)

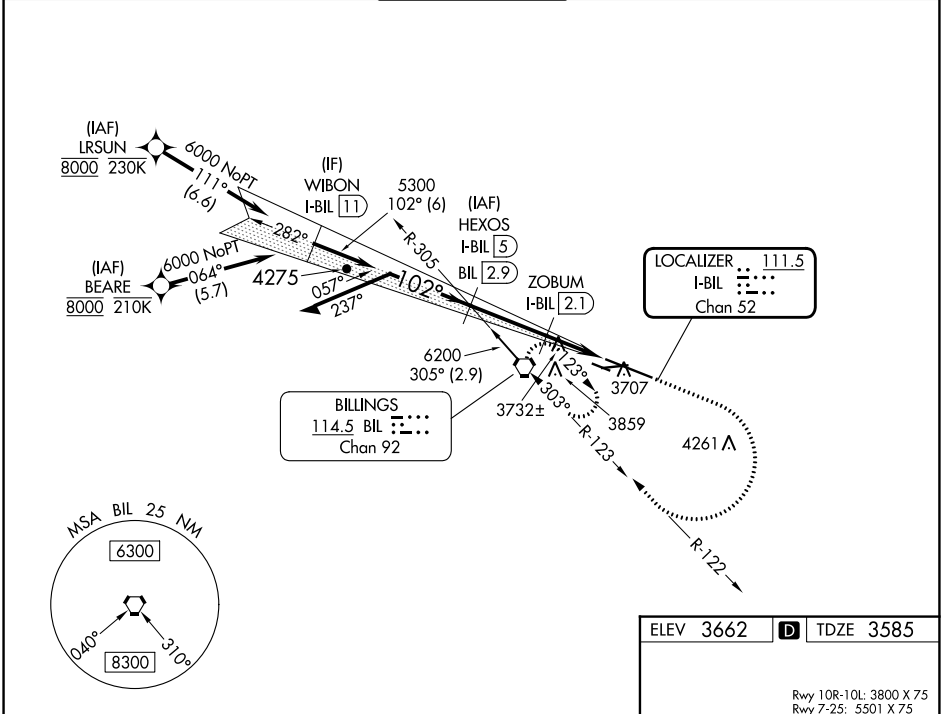
DME required.  
RNP APCH-GPS. From BEARE or LRSUN.

MALSR 

MISSED APPROACH: Climb to 4500 then climbing right turn to 6000 on BIL VORTAC R-122 to BIL VORTAC and hold.

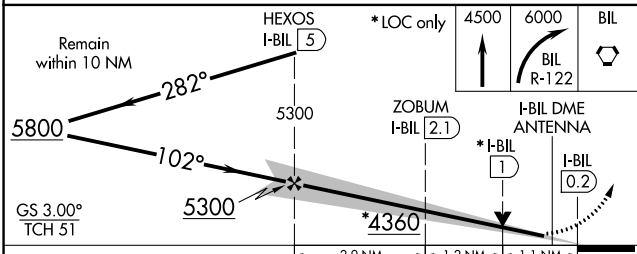
For inop ALS, increase S-LOC 10L Cat C/D visibility to RVR 6000.  
# RVR 1800 authorized with use of FD or AP or HUD to DA.

ATIS <b>126.3</b>	BILLINGS APP CON <b>120.5 284.6</b>	BILLINGS TOWER <b>127.2 257.8</b>	GND CON <b>121.9</b>	CLNC DEL <b>121.9</b>
----------------------	--	--------------------------------------	-------------------------	--------------------------



NW-1, 26 DEC 2024 to 23 JAN 2025

NW-1, 26 DEC 2024 to 23 JAN 2025



ELEV 3662 **D** TDZE 3585

Rwy 10R-10L: 3800 X 75  
Rwy 7-25: 5501 X 75