

LOC I-BZX 111.5	APP CRS 131°	Rwy Idg 8794
		TDZE 1655
		Apt Elev 1661

ILS or LOC RWY 13

BISMARCK MUNI (BIS)

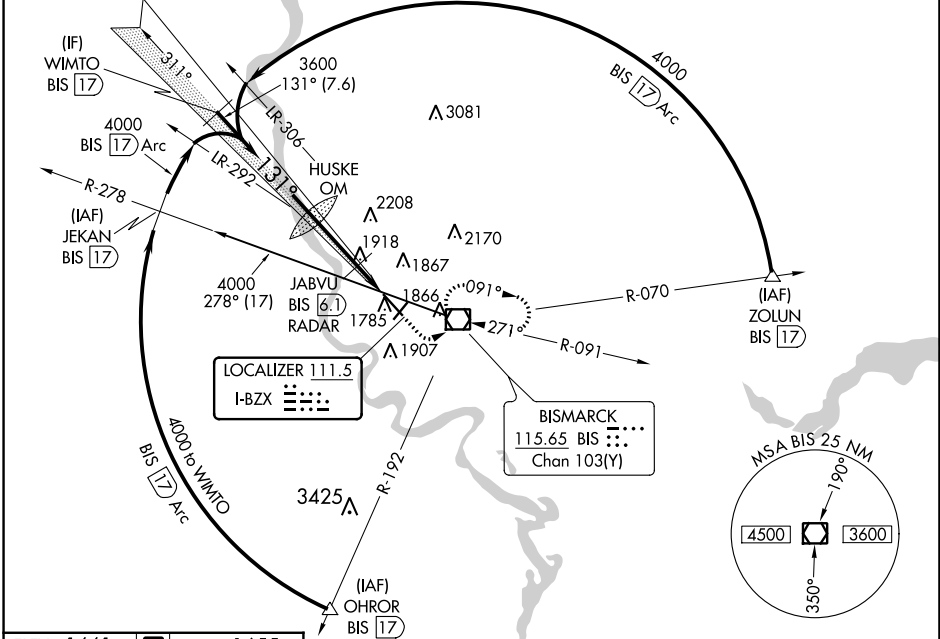
DME required for procedure entry. DME required.

ASR
 Inop table does not apply to S-ILS 13. DME from BIS VOR/DME.
 Simultaneous reception of I-BZX and BIS DME required.
 # DME from BIS VOR/DME.



MISSED APPROACH: Climb to 2200 then climbing left turn to 3600 direct BIS VOR/DME and hold, continue climb-in-hold to 3600.

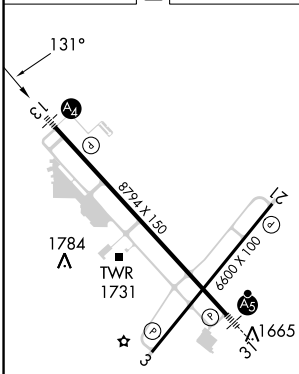
ATIS 119.35	BISMARCK APP CON ★ 126.3 298.9	BISMARCK TOWER★ 118.3 (CTAF) 0 257.8	GND CON 121.9	UNICOM 122.95
-----------------------	--	--	-------------------------	-------------------------



NC-1, 26 DEC 2024 to 23 JAN 2025

NC-1, 26 DEC 2024 to 23 JAN 2025

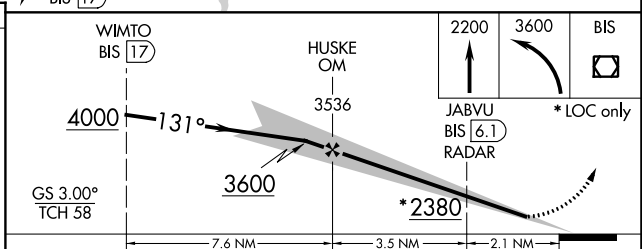
ELEV 1661	D	TDZE 1655
-----------	---	-----------



REIL Rwy 3 and 21
HIRL Rwy 3-21 and 13-31

FAF to MAP 5.6 NM

Knots	60	90	120	150	180
Min:Sec	5:36	3:44	2:48	2:14	1:52



CATEGORY	A	B	C	D
S-ILS 13	1855-¾ 200 (200-¾)			
S-LOC 13	2380-¾	725 (800-¾)	2380-1¾	725 (800-1¾)
C CIRCLING	2380-1	719 (800-1)	2460-2¼ 799 (800-2¼)	2460-2½ 799 (800-2½)
# JABVU FIX MINIMUMS				
S-LOC 13	2180-¾	525 (600-¾)	2180-1¼	525 (600-1¼)
C CIRCLING	2200-1	539 (600-1)	2460-2¼ 799 (800-2¼)	2460-2½ 799 (800-2½)