

BOISE, IDAHO

HI-ILS Z or LOC Z RWY 10R

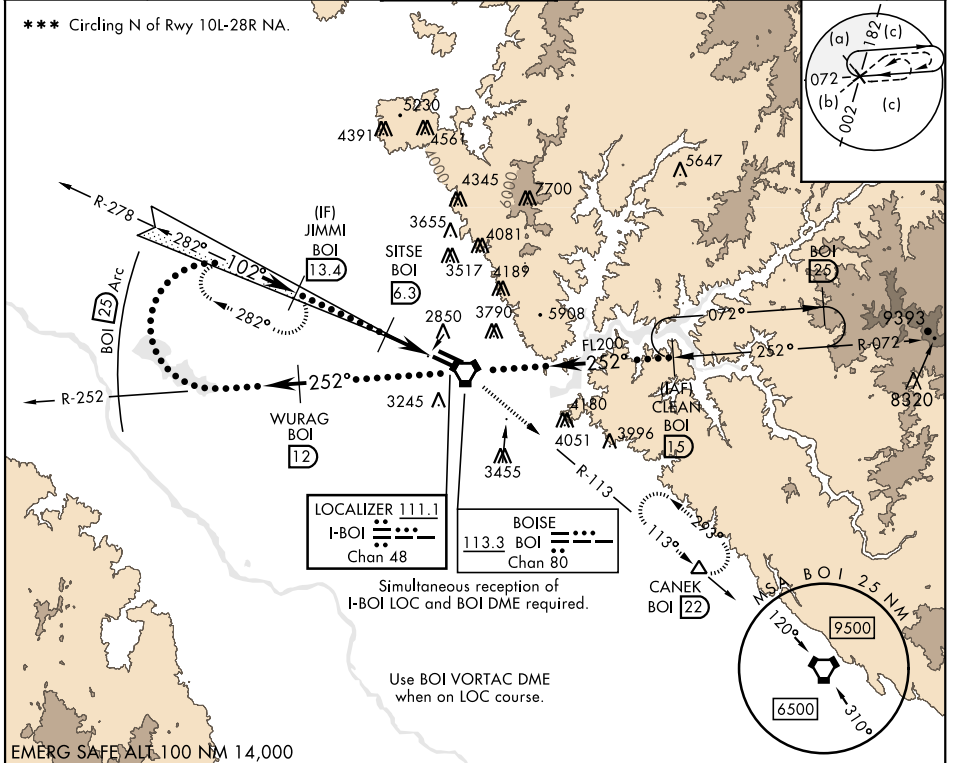
LOC I-BOI 111.1	APCH CRS 102°	Rwy Ldg TDZE Arpt Elev 9763 2836 2872	AL-57 [USAF]	BOISE AIR TERMINAL (GOWEN FLD)	(KBOI)
---------------------------	-------------------------	---	--------------	--------------------------------	--------

DME required. **ALSF-2**

▲ * When ALS inop, increase RVR to 40 and vis to 3/4 mile.
****** When ALS inop, increase RVR to 55 and vis to 1 mile.

MISSED APPROACH: Climb to 7300 on BOI VORTAC R-113 to CANEK/BOI 22 DME and hold.

ATIS 123.9 290.4	BIG SKY APP CON 119.6 269.4	BOISE TOWER 118.1 257.8	GND CON 121.7 348.6	CLNC DEL 125.9 323.2	ASOS
----------------------------	---------------------------------------	-----------------------------------	-------------------------------	--------------------------------	------



EMERG SAFE ALL 100 NM 14,000

7300	BOI R-113	CANEK	VGSI and ILS glidepath not coincident (VGSI Angle 3.00/TCH 64).			ELEV 2872	TDZE 2836
Right at 12,000 remain within 25 NM of BOI VORTAC	WURAG BOI 12	JIMMI BOI 13.4	SITSE BOI 6.3	BOI 3.4	AVVUV BOI 2.7	CLEAN BOI 15	
GS 3.00° TCH 54	FL200	FL200	FL200	FL200	FL200		
CATEGORY	C	D	E				
S-ILS 10R **	3036/18	200	(200-1/2)				
S-LOC 10R **	3200/35	364	(400-3/8)				
***	3640-2 1/4 768 (800-2 1/4)	3820-3 948 (1000-3)	3880-3 1008 (1100-3)				
C CIRCLING							
TDZL/CL Rwy 10R-28L HIRL Rwys 10L-28R, 10R-28L REIL Rwy 10L							

BOISE, IDAHO

43°34'N-116°13'W

BOISE AIR TERMINAL (GOWEN FLD) (KBOI)

Amdt 5A 29DEC22

HI-ILS Z or LOC Z RWY 10R

NW-1, 26 DEC 2024 to 23 JAN 2025

NW-1, 26 DEC 2024 to 23 JAN 2025