

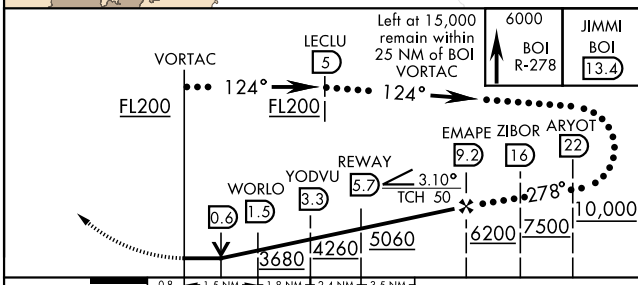
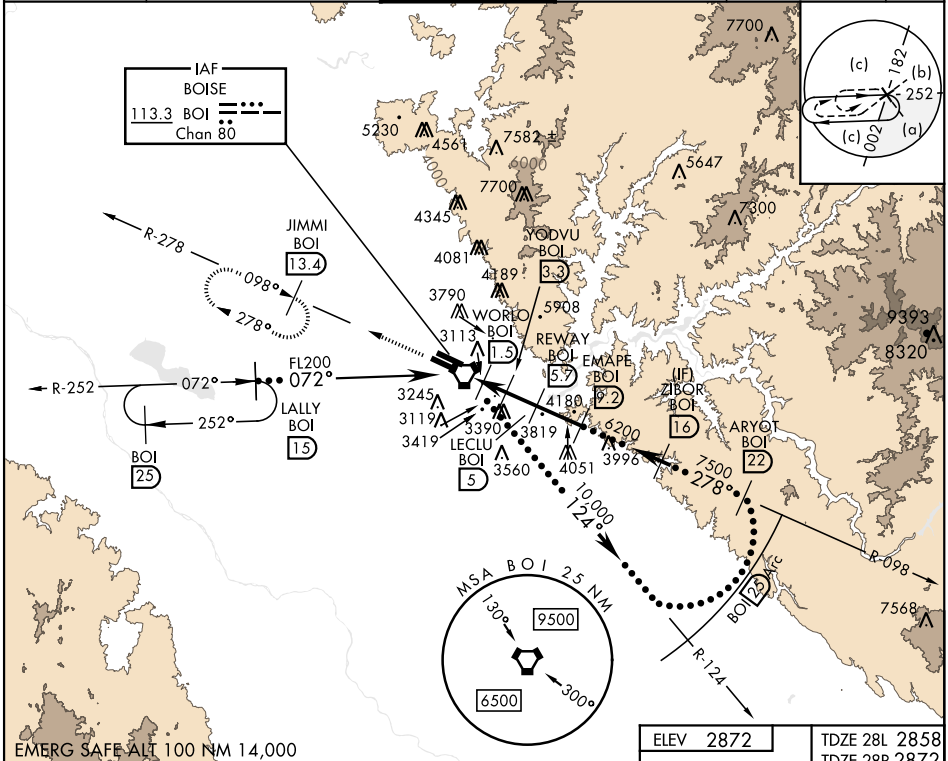
BOISE, IDAHO

VORTAC BOI 113.3 Chan 80	APCH CRS 278°	Rwy Idg 28L 9763 28R 2858 28R 2872	28R 10,000 28R 2872
--	-------------------------	--	--------------------------------------

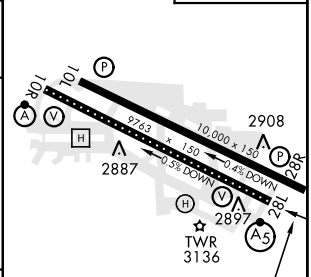
HI-VOR Z or TACAN Z RWY 28L
AL-57 [USAF]
BOISE AIR TERMINAL (GOWEN FLD) (KBOI)

DME required.	MALSR 	MISSED APPROACH: Climb to 6000 on BOI VORTAC R-278 to JIMMI/13.4 DME and hold.
---------------	-----------	---

ATIS 123.9 290.4	BIG SKY APP CON 119.6 269.4	BOISE TOWER 118.1 257.8	GND CON 121.7 348.6	CLNC DEL 125.9 323.2	ASOS
----------------------------	---------------------------------------	-----------------------------------	-------------------------------	--------------------------------	------



ELEV 2872	TDZE 28L 2858 TDZE 28R 2872
-----------	--------------------------------



CATEGORY	C	D	E
S-28L *	3380/55	522	(600-1)
SIDESTEP RWY 28R	3380-1 7/8 508 (600-1 7/8)	3380-2 1/2	508 (600-2 1/2)
CIRCLING **	3620-2 1/4 748 (800-2 1/4)	3820-3 948 (1000-3)	3880-3 1008 (1100-3)

TDZL/CL Rwy 10R-28L
HIRL Rwy 10L-28R, 10R-28L
REIL Rwy 10L

BOISE, IDAHO 43°34'N-116°13'W BOISE AIR TERMINAL (GOWEN FLD) (KBOI)

Amdt 4 08SEP22

HI-VOR Z or TACAN Z RWY 28L

NW-1, 26 DEC 2024 to 23 JAN 2025

NW-1, 26 DEC 2024 to 23 JAN 2025