

LOC/DME I-BOI 111.1 Chan 48	APP CRS 102°	Rwy Idg 9763 TDZE 2836 Apt Elev 2872
---	------------------------	---

ILS Y RWY 10R (SA CAT I)

BOISE AIR TRML/GOWEN FLD (BOI)

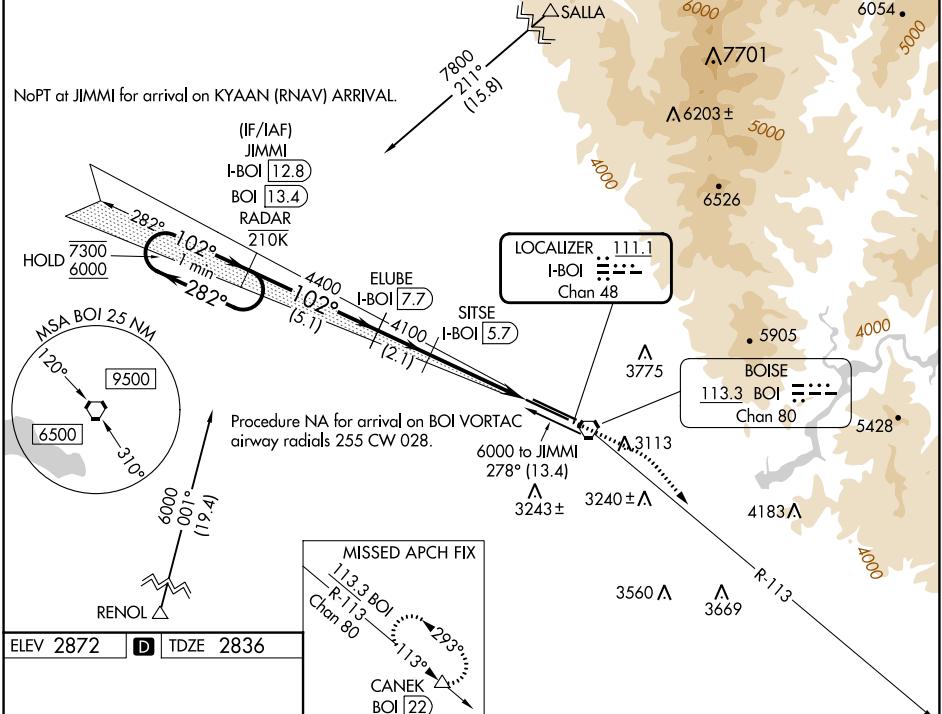
DME required. RNAV 1 - GPS. From SALLA and RENOL.

Requires specific OPSPEC, MSPEC, or LOA approval and use of HUD to DH.

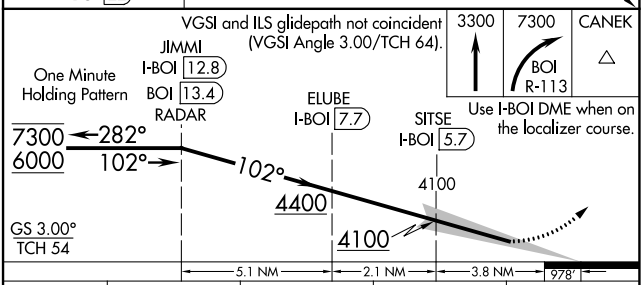
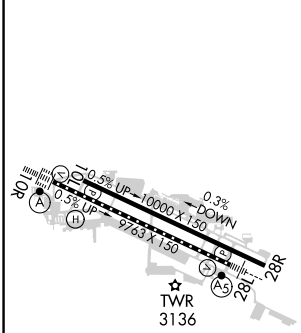


MISSED APPROACH: Climb to 3300 then dimbing right turn to 7300 on BOI VORTAC R-113 to CANEK/BOI VORTAC 22 DME and hold.

D-ATIS 123.9 290.4	BIG SKY APP CON 119.6 269.4	BOISE TOWER 118.1 257.8	GND CON 121.7 348.6	CLNC DEL 125.9 323.2
------------------------------	---------------------------------------	-----------------------------------	-------------------------------	--------------------------------



ELEV 2872	D TDZE 2836
-----------	--------------------



CATEGORY	A	B	C	D
S-ILS 10R	RA 181/14 150 DA 2986			

SA CATEGORY I ILS - SPECIAL AIRCREW & AIRCRAFT CERTIFICATION REQUIRED

REIL Rwy 10L
TDZ/CL Rwy 10R and 28L
HIRL Rwy 10L-28R and 10R-28L

NW-1, 26 DEC 2024 to 23 JAN 2025

NW-1, 26 DEC 2024 to 23 JAN 2025