

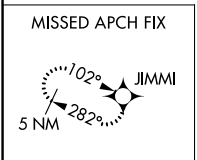
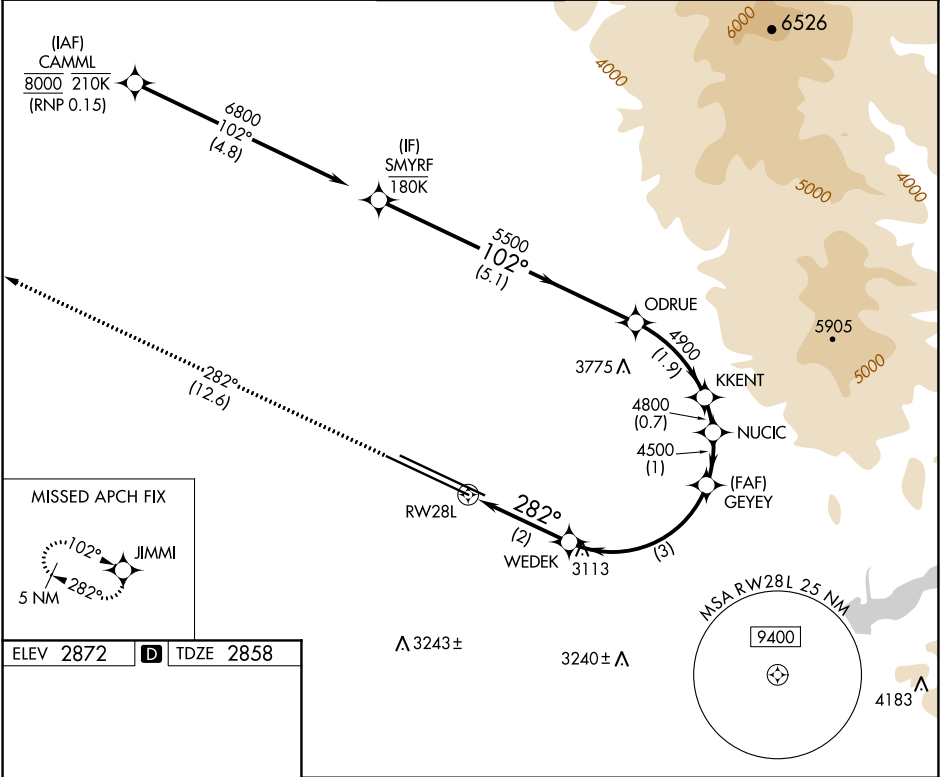
APP CRS	Rwy Idg	<b>9763</b>
<b>282°</b>	TDZE	<b>2858</b>
	Apt Elev	<b>2872</b>

# RNAV (RNP) X RWY 28L

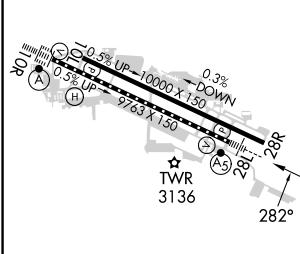
BOISE AIR TRML/GOWEN FLD (BOI)

RNP AR APCH - GPS.	MALSR	MISSED APPROACH: Climb to 6000 on track 282° to JIMMI and hold, continue climb-in-hold to 6000.
▼ For uncompensated Baro-VNAV systems, procedure NA below -14°C or above 54°C.		

D-ATIS <b>123.9 290.4</b>	BIG SKY APP CON <b>119.6 269.4</b>	BOISE TOWER <b>118.1 257.8</b>	GND CON <b>121.7 348.6</b>	CLNC DEL <b>125.9 323.2</b>
------------------------------	---------------------------------------	-----------------------------------	-------------------------------	--------------------------------



ELEV 2872	<b>D</b>	TDZE 2858
-----------	----------	-----------



6000	JIMMI	VGSi and RNAV glidepath not coincident (VGSi Angle 3.00/TCH 50).				SMYRF
tr 282°		WEDEK	GYEY	NUCIC	KKENT	ODRUE
		3545	4500	4800	4900	5500
			4500			6800
						GP 3.00° TCH 50
		2 NM	3 NM	1 NM	0.7 NM	1.9 NM
						5.1 NM

CATEGORY	A	B	C	D
RNP 0.15 DA	3229/35 371 (400- $\frac{1}{2}$ )			

**AUTHORIZATION REQUIRED**

NW-1, 26 DEC 2024 to 23 JAN 2025

NW-1, 26 DEC 2024 to 23 JAN 2025