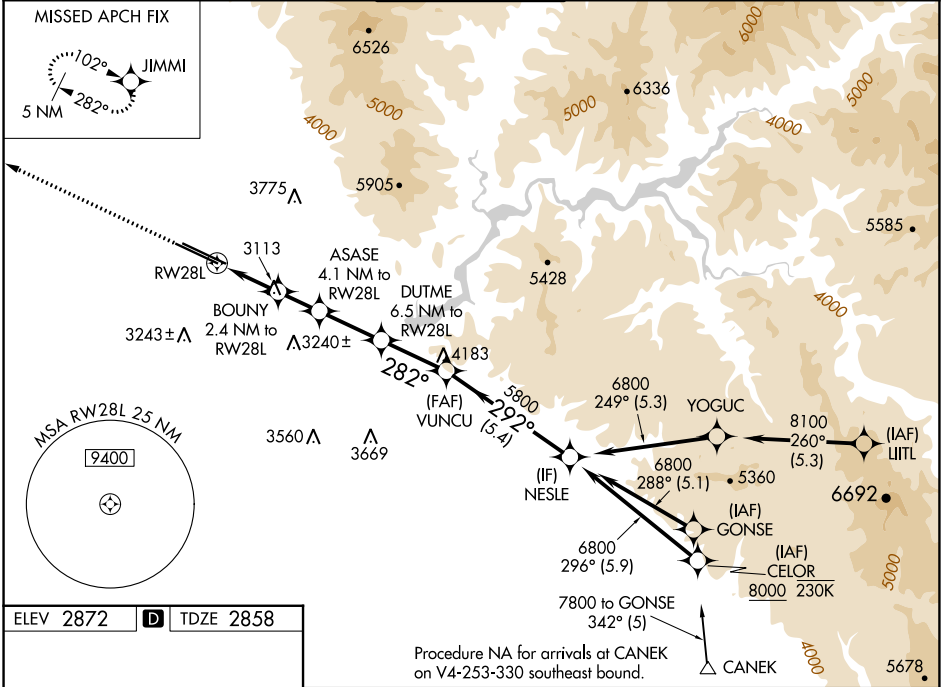


WAAS CH 7702 W28A	APP CRS 282°	Rwy Idg TDZE Apt Elev	9763 2858 2872
---------------------------------------	------------------------	-----------------------------	---

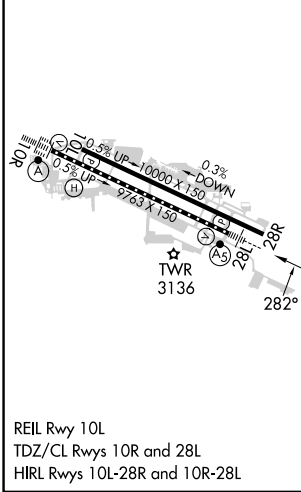
RNAV (GPS) Y RWY 28L

BOISE AIR TRML/GOWEN FLD (BOI)

RNP APCH - GPS.		MISSED APPROACH: Climb to 6000 direct JIMMI and hold, continue climb-in-hold to 6000.		
Circling NA north of Rwy 10L-28R. For uncompensated Baro-VNAV systems, LNAV/VNAV NA below -14°C or above 54°C. For inop ALS, increase LPV all Cats visibility to RVR 4500, and LNAV/VNAV all Cats visibility to RVR 6000.				
D-ATIS 123.9 290.4	BIG SKY APP CON 119.6 269.4	BOISE TOWER 118.1 257.8	GND CON 121.7 348.6	CLNC DEL 125.9 323.2



ELEV 2872	D TDZE 2858
-----------	--------------------



REIL Rwy 10L
TDZ/CL Rwys 10R and 28L
HIRL Rwys 10L-28R and 10R-28L

	6000 JIMMI VGSi and RNAV glidepath not coincident (VGSi Angle 3.00/TCH 50).	NESLE 6800 GP 3.00° TCH 50
	ASASE 4.1 NM to RWY 28L DUTME 6.5 NM to RWY 28L BOUNY 2.4 NM to RWY 28L VUNCU 5800 282°	
	1.4 NM to RWY 28L 1 NM 1.6 NM 2.5 NM 2.6 NM 5.4 NM	
	CATEGORY A B C D	
	LPV DA 3160/24 302 (300-½)	
	LNAV/VNAV DA 3267/40 409 (400-¾)	
	LNAV MDA 3380/24 522 (600-½) 3380/55 522 (600-1)	
	CIRCLING 3440-1 568 (600-1) 3640-2¼ 768 (800-2¼) 3820-3 948 (1000-3)	