

BLZZR SIX DEPARTURE (RNAV)

AL-58 (FAA)

BOSTON, MASSACHUSETTS

NE-1, 26 DEC 2024 to 23 JAN 2025

**TOP ALTITUDE: 5000**

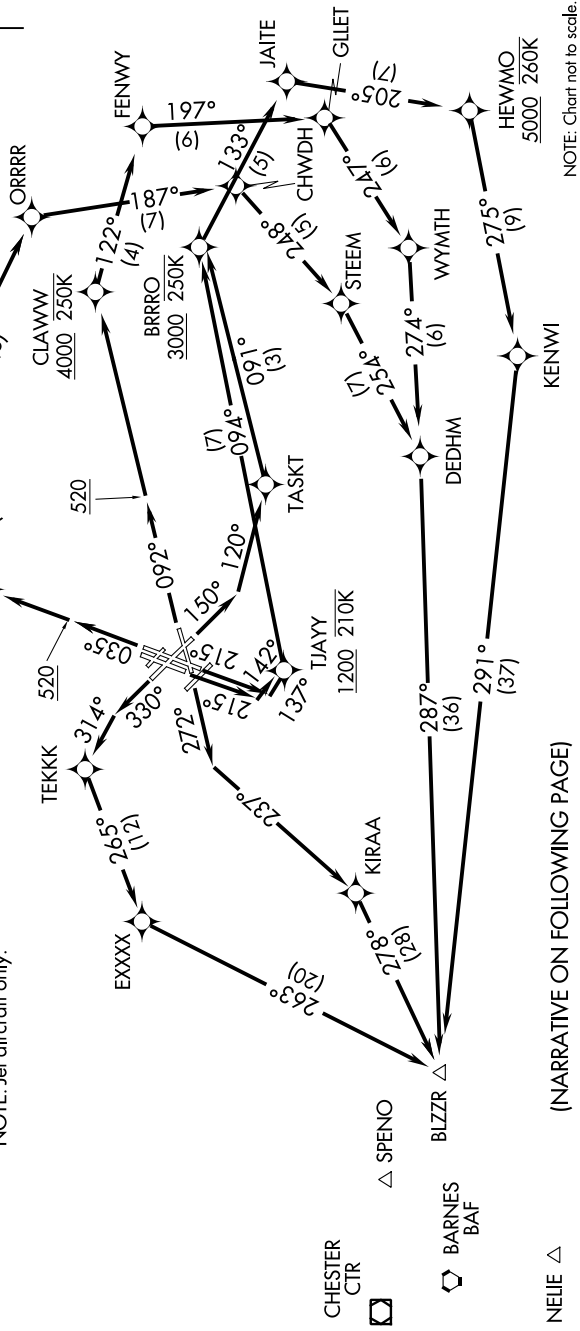
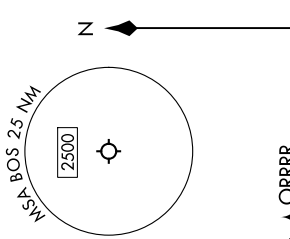
RNAV 1 - DME/DME/IRU or GPS.  
 RADAR required for non-GPS equipped aircraft.

**TAKEOFF MINIMUMS:**

- Rwy 4L, 14, 15L, 32, 33R: NA-ATC.
- Rwy 4R: Standard with minimum climb of 500'/NM to 520.
- Rwy 9: Standard with minimum climb of 500'/NM to 520.
- Rwy 15R: Standard with minimum climb of 500'/NM to 520.
- Rwy 22L: 300-1 with minimum climb of 500'/NM to 520, or standard with minimum climb of 500'/NM to 520 if tower reports no tall vessels in the departure area.
- Rwy 22R: Standard with minimum climb of 500'/NM to 520.
- Rwy 27: Standard with a minimum climb of 500'/NM to 1300.
- Rwy 33L: Standard with a minimum climb of 500'/NM to 520.

NOTE: Jet aircraft only.

- BOSTON DEP CON 133.0
- D-ATIS 135.0
- CLNC DEL 121.65 257.8
- CPDLC
- GND CON 121.75 121.9
- BOSTON TOWER 128.8 257.8 (WEST)
- 132.225 257.8 (EAST)



(NARRATIVE ON FOLLOWING PAGE)

NOTE: Chart not to scale.

NE-1, 26 DEC 2024 to 23 JAN 2025

BLZZR SIX DEPARTURE (RNAV)

BOSTON, MASSACHUSETTS