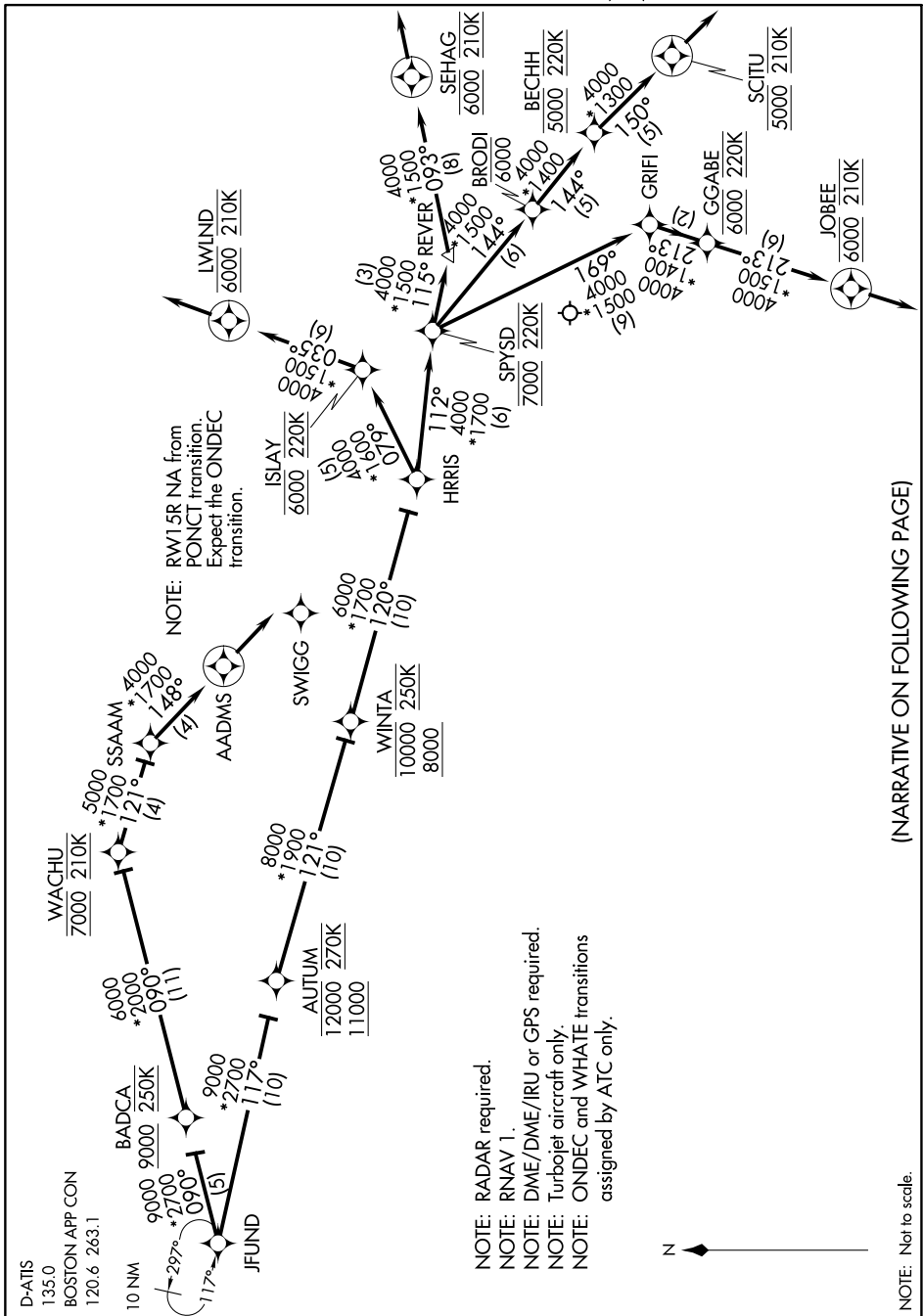


JFUND TWO ARRIVAL(RNAV) Arrival Routes

AL-58 (FAA)

BOSTON, MASSACHUSETTS

NE-1, 26 DEC 2024 to 23 JAN 2025



- NOTE: RADAR required.
- NOTE: RNAV 1.
- NOTE: DME/DME/IRU or GPS required.
- NOTE: Turbojet aircraft only.
- NOTE: ONDEC and WHATIE transitions assigned by ATC only.



(NARRATIVE ON FOLLOWING PAGE)

NOTE: Not to scale.

NE-1, 26 DEC 2024 to 23 JAN 2025

JFUND TWO ARRIVAL(RNAV) Arrival Routes

BOSTON, MASSACHUSETTS