

WAAS	APP CRS	Rwy Idg	<b>8851</b>
CH <b>50124</b>	<b>035°</b>	TDZE	<b>18</b>
<b>W04A</b>		Apt Elev	<b>19</b>

# RNAV (GPS) RWY 4R

GENERAL EDWARD LAWRENCE LOGAN INTL (BOS)

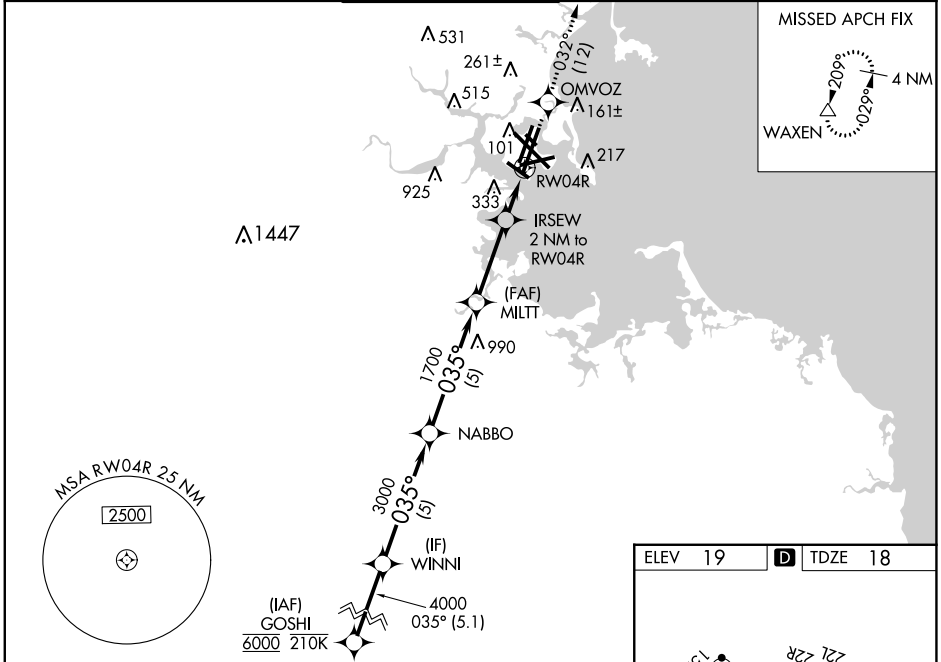
RNP APCH - GPS.

▼ For uncompensated Baro-VNAV systems, LNAV/VNAV NA below -16°C or above 54°C. For inop ALS increase LNAV/VNAV all Cats visibility to 1 1/2 SM. When control tower reports tall vessels in approach area: increase LPV DA to 374 and all Cats visibility to RVR 4000, increase LNAV Cat A/B visibility to RVR 4000, for inop ALS with tall vessels increase LNAV/VNAV all Cats visibility to 1 1/2 SM, LNAV Cat A/B visibility to RVR 5500 and LNAV Cat C/D to 1 1/2 SM. For tall vessels Rwy 4R helicopter visibility reduction below RVR 4000 NA. When vessels taller than 144 feet present, LPV and LNAV/VNAV NA.

ALSF-2

MISSED APPROACH: Climb to 3000 direct OMVOZ and on track 032° to WAXEN and hold.

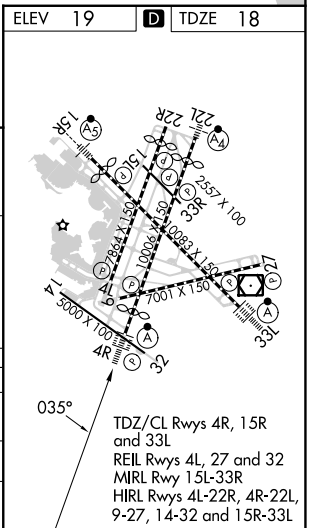
D-ATIS <b>135.0</b>	BOSTON APP CON <b>120.6 263.1</b>	<b>BOSTON TOWER</b> <b>128.8 257.8 (WEST)</b> <b>132.225 257.8 (EAST)</b>	GND CON <b>121.75 121.9</b>	CLNC DEL <b>121.65 257.8</b>	CPDLC
------------------------	--------------------------------------	---	--------------------------------	---------------------------------	-------



VGSI and RNAV glidepath not coincident (VGSI Angle 3.00/TCH 67).

GOSHI	WINNI	NABBO	MILTT	IRSEW	OMVOZ	WAXEN
6000	4000	3000	1700	700	3000	△
GP 3.00°	035°				032°	
TCH 51						
	5.1 NM	5 NM	5 NM	3.1 NM	0.8 NM	1.2 NM

CATEGORY	A	B	C	D
LPV DA		218/18	200 (200-1/2)	
LNAV/VNAV DA		514/50	496 (500-1)	
LNAV MDA	480/24	462 (500-1/2)	480/50	462 (500-1)



NE-1, 26 DEC 2024 to 23 JAN 2025

NE-1, 26 DEC 2024 to 23 JAN 2025