

REVSS SIX DEPARTURE (RNAV)

AL-58 (FAA)

BOSTON, MASSACHUSETTS

NE-1, 26 DEC 2024 to 23 JAN 2025

BOSTON DEP CON

133.0
 D-ATIS 135.0
 CLNC DEL
 121.65 257.8
 CPDIC
 GND CON
 121.75 121.9
 BOSTON TOWER
 128.8 257.8 (WEST)
 132.225 257.8 (EAST)

TAKEOFF MINIMUMS

Rwy 4L, 14, 15L, 32, 33R: NA - ATC.

Rwy 4R, 9, 15R, 22R, 33L: Standard with minimum climb of 500'/NM to 520.

Rwy 22L: 300-1 with minimum climb of 500'/NM to 520, or standard with minimum climb of 500'/NM to 520 if tower reports no tail vessels in the departure area.

Rwy 27: Standard with minimum climb of 500' per NM to 1300.

NOTE: Jet aircraft only.

RNAV 1 - DME/DME/IRU or GPS.
 RADAR required for non-GPS equipped aircraft.

TOP ALTITUDE:
5000

HURBE
4000

CLAWW
4000 250K

ORRRR
1222°

FENWY
197°

JAITE
133°

CHWDH
133°

GILLET
205°

HEWMO
5000 260K

WYMYTH
275°

STEEM
271°

DEDHM
274°

KENWI
275°

TASKT
09A

TJAYY
1200 210K

KIRAA
1200 210K

TIANY
1200 210K

TIANY
1200 210K

TIANY
1200 210K

TIANY
1200 210K

TIANY
1200 210K

TIANY
1200 210K

TIANY
1200 210K

TIANY
1200 210K

TIANY
1200 210K

TIANY
1200 210K

TIANY
1200 210K

TIANY
1200 210K

TIANY
1200 210K

TIANY
1200 210K

TIANY
1200 210K

TIANY
1200 210K

TIANY
1200 210K

TIANY
1200 210K

TIANY
1200 210K

TIANY
1200 210K

TIANY
1200 210K

TIANY
1200 210K

TIANY
1200 210K

TIANY
1200 210K

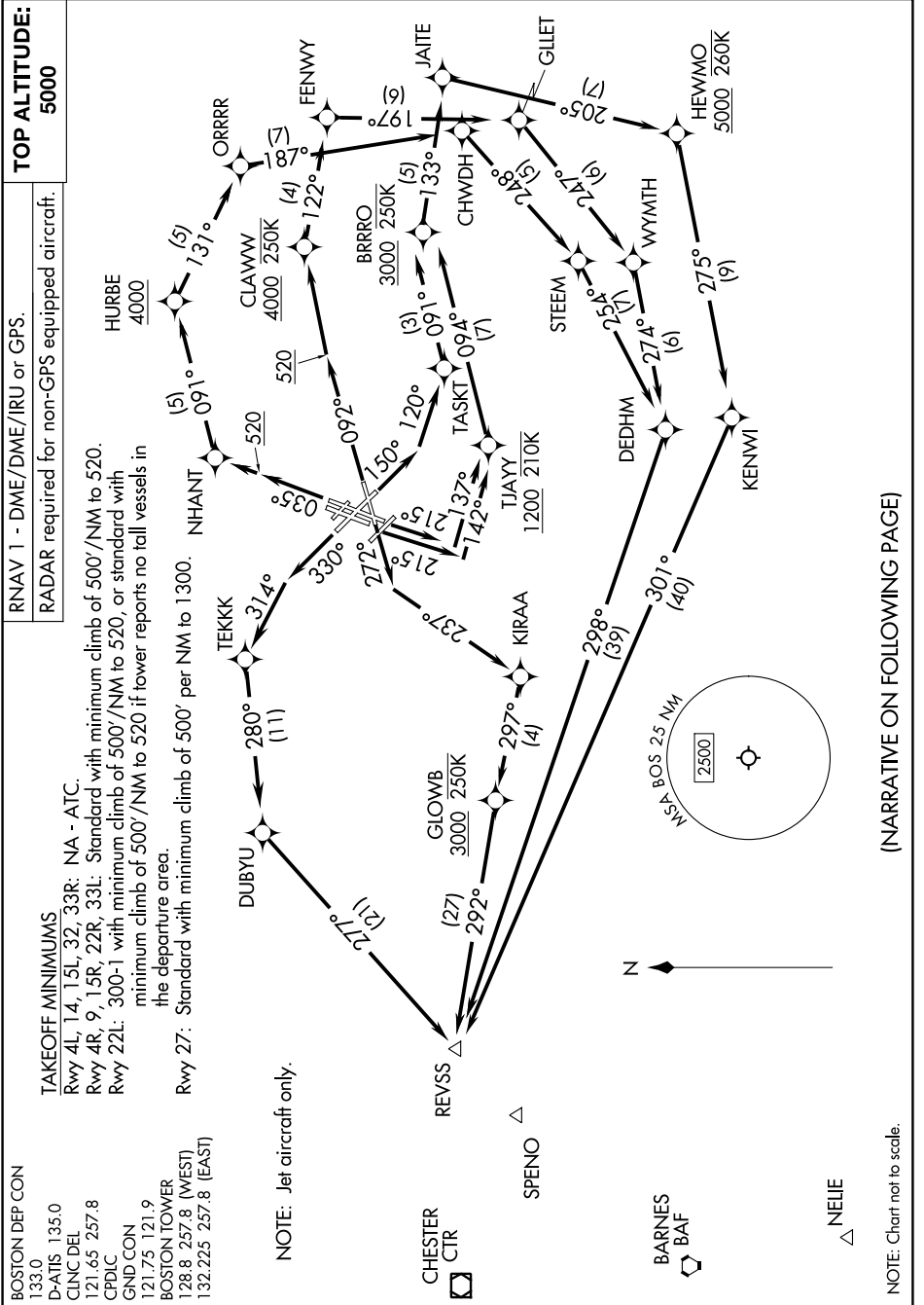
TIANY
1200 210K

TIANY
1200 210K

133.0
 D-ATIS 135.0
 CLNC DEL
 121.65 257.8
 CPDIC
 GND CON
 121.75 121.9
 BOSTON TOWER
 128.8 257.8 (WEST)
 132.225 257.8 (EAST)

REVSS SIX DEPARTURE (RNAV)

BOSTON, MASSACHUSETTS



(NARRATIVE ON FOLLOWING PAGE)

NOTE: Chart not to scale.

NE-1, 26 DEC 2024 to 23 JAN 2025