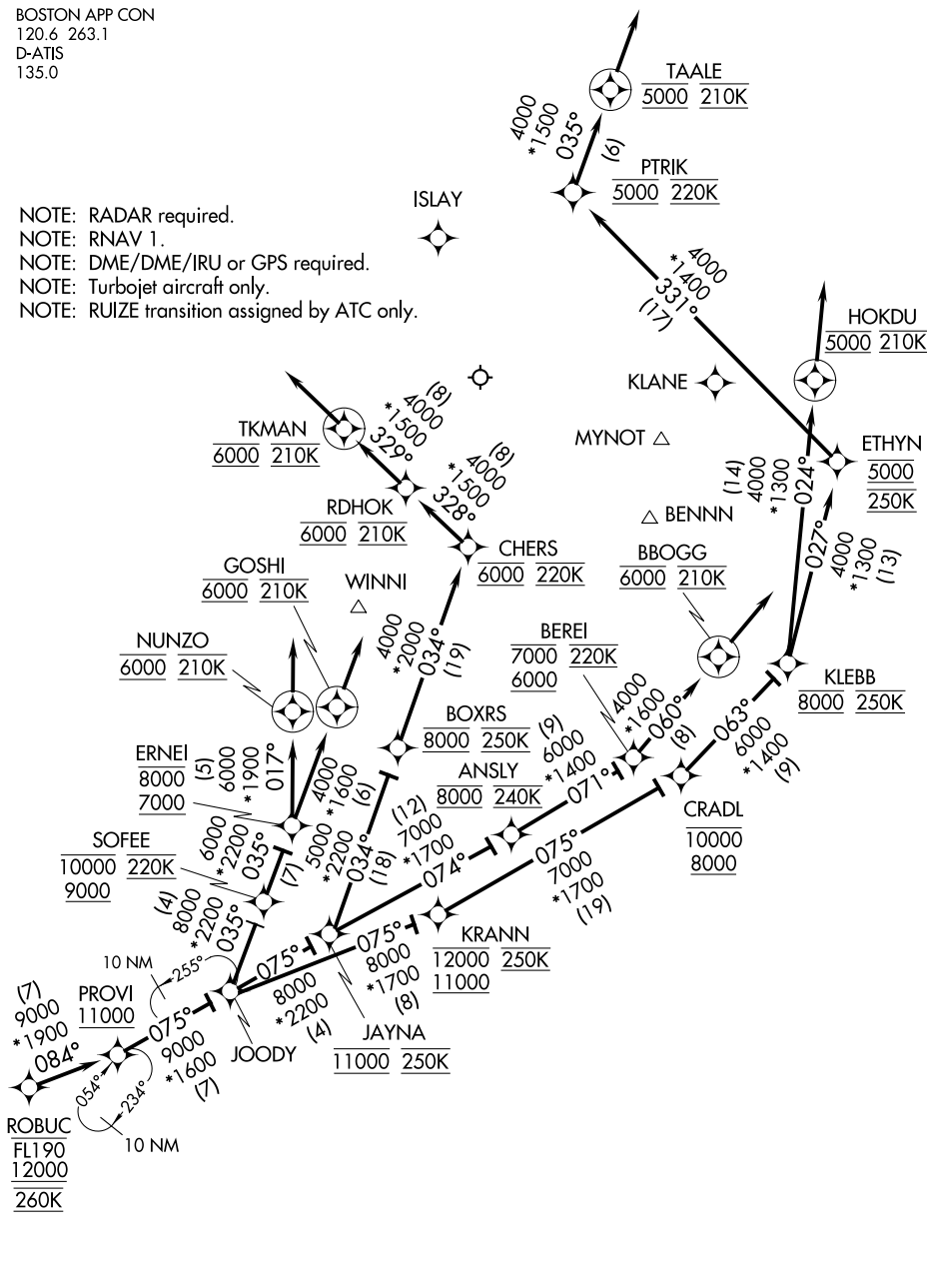


ROBUC THREE ARRIVAL (RNAV) Arrival Routes

BOSTON APP CON
120.6 263.1
D-ATIS
135.0

- NOTE: RADAR required.
- NOTE: RNAV 1.
- NOTE: DME/DME/IRU or GPS required.
- NOTE: Turbojet aircraft only.
- NOTE: RUIZE transition assigned by ATC only.



NE-1, 26 DEC 2024 to 23 JAN 2025

NE-1, 26 DEC 2024 to 23 JAN 2025

NOTE: Chart not to scale.

(NARRATIVE ON FOLLOWING PAGE)

ROBUC THREE ARRIVAL (RNAV) Arrival Routes