

# WYLYY FIVE DEPARTURE (RNAV)

AL-58 (FAA)

BOSTON, MASSACHUSETTS

NE-1, 26 DEC 2024 to 23 JAN 2025

**▼ DEPARTURE ROUTE DESCRIPTION**  
**TAKEOFF RUNWAY 27:** Climb on heading 272° to intercept course 234° to cross WYLYY at or above 2300, then on depicted route to CYOTI, thence....

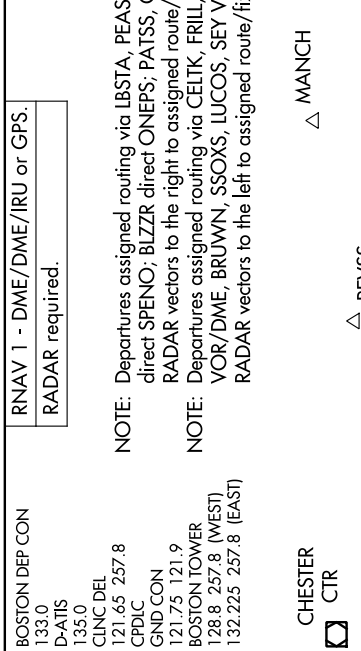
....expect vectors to assigned fix/NAVAID (see notes). Maintain 5000 or lower assigned altitude. Expect clearance to filed altitude/flight level within ten (10) minutes after departure.

**TOP ALTITUDE:**  
**5000**

**RNAV 1 - DME/DME/IRU or GPS.**  
**RADAR required.**

**NOTE:** Departures assigned routing via LBSTA, PEASE, MANCH, HYLND, or REVSS direct SPENO; BLZZR direct ONEPS, PATSS, GLYDE, or BOSOX expect RADAR vectors to the right to assigned route/fix.

**NOTE:** Departures assigned routing via CELTK, FRILL, LFBV VOR/DME, ACK VOR/DME, BRUWN, SSOXS, LUCOS, SEY VOR/DME, or BURDY expect RADAR vectors to the left to assigned route/fix.



# WYLYY FIVE DEPARTURE (RNAV)

BOSTON, MASSACHUSETTS

GENERAL EDWARD LAWRENCE LOGAN INTL (BOS)

BOSTON DEP CON  
 133.0  
 D-ATIS  
 135.0  
 CLNC DEL  
 121.65 257.8  
 CPDC  
 GND CON  
 121.75 121.9  
 BOSTON TOWER  
 128.8 257.8 (WEST)  
 132.225 257.8 (EAST)

CHESTER  
 CTR

BARNES  
 BAF

SPENO

REVSS

GLYDE

BLZZR

BOSOX

PATSS

NELIE

ONEPS

WYLYY 2300

CYOTI

CELTK

FRILL

MARCONI

LFBV

BURDY

SSOXS

BRUWN

LUCOS

SANDY POINT

SEY

NAUTUCKET

ACK

**TAKEOFF MINIMUMS:**  
 Rwy 4L/R, 9, 14, 15L/R 22L/R, 32, 33L/R: NA-ATC.  
 Rwy 27: Standard with a minimum climb of 500' per NM to 2300.

**NOTE:** ATC assigned. Do not file.  
 For Turbojets only.  
 Departure hdg/RNAV tracks/vectors are predicated on avoiding noise sensitive areas. Flight crew awareness and compliance is important in minimizing noise impacts on surrounding communities.

NOTE: Chart not to scale.

NE-1, 26 DEC 2024 to 23 JAN 2025