

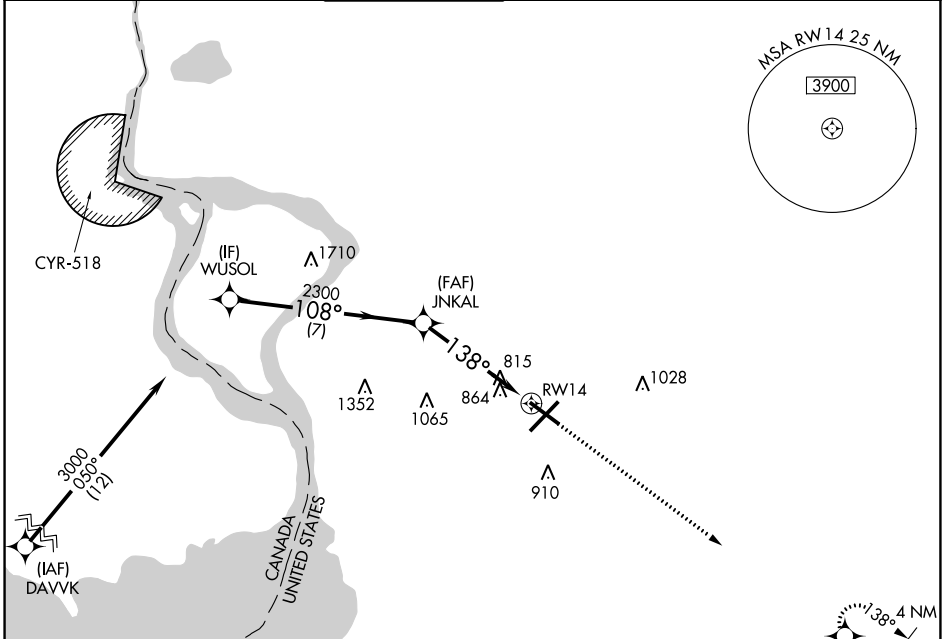
WAAS CH 58129 W14A	APP CRS 138°	Rwy Idg TDZE Apt Elev	6121 710 727
--	------------------------	-----------------------------	---

RNAV (GPS) RWY 14

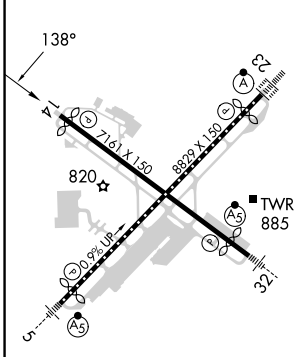
BUFFALO NIAGARA INTL (BUF)

RNP APCH.		MISSED APPROACH: Climb to 3500 direct WALES and hold.			
Helicopter visibility reduction below 3/4 SM NA.					

D-ATIS 135.35	BUFFALO APP CON 126.15 263.125	BUFFALO TOWER 120.5 257.8	GND CON 133.2 257.8	CLNC DEL 124.7 257.8	CPDLC
-------------------------	--	--	-------------------------------	--------------------------------	-------



ELEV 727	D	TDZE 710
----------	----------	----------



REIL Rwy 14
TDZ/CL Rws 5 and 23
HIRL Rws 5-23 and 14-32



WUSOL	3000	108°	JNKAL	2300	138°	1 NM to RWY 14	RWY 14	3500	WALES
				3.00° TCH 53					
		7 NM		3.9 NM		1 NM			

CATEGORY	A	B	C	D
LP MDA	1080-1	370 (400-1)	1080-1 1/8	370 (400-1 1/2)
LNVA MDA	1120-1	410 (400-1)	1120-1 1/4	410 (400-1 1/2)
C CIRCLING	1200-1	473 (500-1)	1220-1 1/2 493 (500-1 1/2)	1340-2 613 (700-2)

NE-2, 26 DEC 2024 to 23 JAN 2025

NE-2, 26 DEC 2024 to 23 JAN 2025