

# THRNE THREE ARRIVAL (RNAV) Arrival Routes

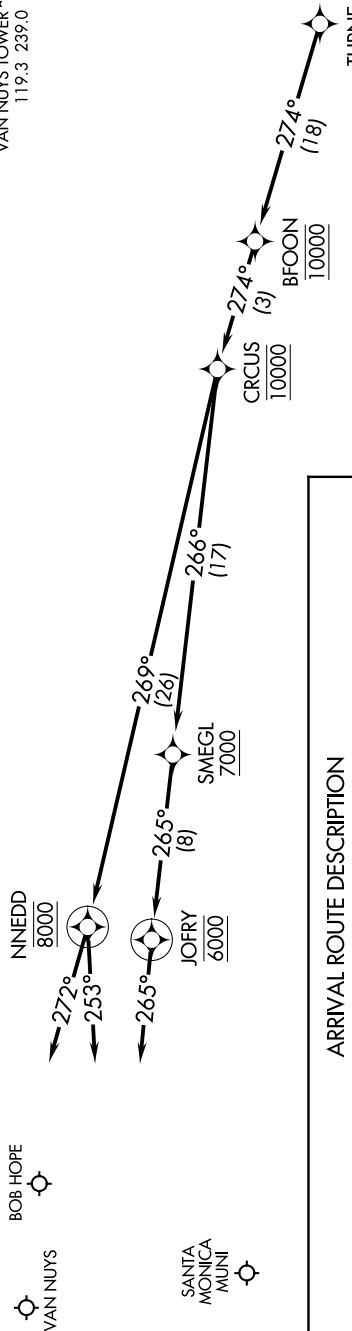
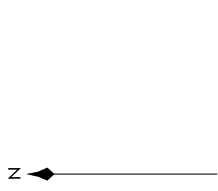
AL-67 (FAA)

BURBANK, CALIFORNIA

SW-3, 26 DEC 2024 to 23 JAN 2025

SOCAL APP CON  
126.7 370.95  
BUR D-ATIS  
134.5  
SMO ATIS  
119.15  
VNY ATIS  
127.55  
BURBANK TOWER  
118.7 254.3  
SANTA MONICA TOWER\*  
120.1 257.8  
VAN NUYS TOWER\*\*  
119.3 239.0

NOTE: RADAR required.  
NOTE: RNAV 1.  
NOTE: DME/DME/IRU or GPS required.  
NOTE: Turbojet and turboprop aircraft only.  
NOTE: Expect local area altimeter setting reaching FL200.



**ARRIVAL ROUTE DESCRIPTION**

**LANDING KBUR:** From THRNE on track 274° to cross BFOON at 10000, then on track 274° to cross CRCUS at 10000, then on track 269° to cross NNEDD at 8000, then on track 253°. Expect RADAR vectors to final approach course.

**LANDING KSMO:** From THRNE on track 274° to cross BFOON at 10000, then on track 274° to cross CRCUS at 10000, then on track 266° to cross SMEGL at or above 7000, then on track 265° to cross JOFRY at 6000, then on track 265°. Expect RADAR vectors to final approach course.

**LANDING KVNY:** From THRNE on track 274° to cross BFOON at 10000, then on track 274° to cross CRCUS at 10000, then on track 269° to cross NNEDD at 8000, then on track 272°. Expect RADAR vectors to final approach course.

NOTE: Chart not to scale.

# THRNE THREE ARRIVAL (RNAV) Arrival Routes

BURBANK, CALIFORNIA

SW-3, 26 DEC 2024 to 23 JAN 2025