

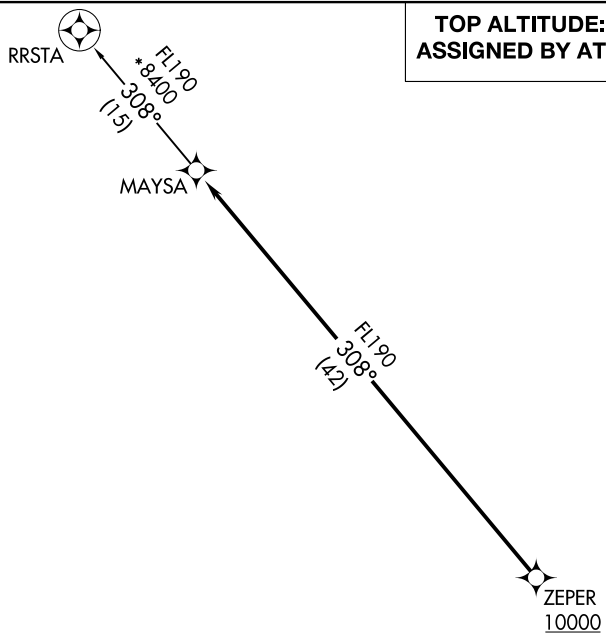
(MAYSA7.MAYSA) 20142

MAYSA SEVEN DEPARTURE (RNAV) AL-74 (FAA)

PHOENIX-MESA GATEWAY (IWA)
PHOENIX, ARIZONA

**TOP ALTITUDE:
ASSIGNED BY ATC**

- ATIS★
- 133.5 270.275
- CLNC DEL
- 135.05
- GND CON
- 128.25 275.8
- GATEWAY TOWER★
- 120.6 289.4
- PHOENIX DEP CON
- 124.9 353.8

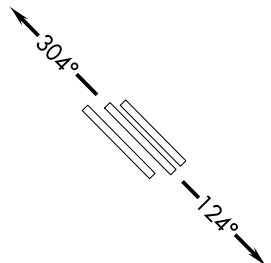


- NOTE: RNAV 1.
- NOTE: Turbojets and turboprops only.
- NOTE: RADAR required.
- NOTE: GPS required.
- NOTE: Aircraft departing KGEU and KGYR ATC assigned only.
- Do not file.

TAKEOFF MINIMUMS

Rwys 12L/C/R: Standard with a minimum climb of 250' per NM to 3100.
 Rwys 30L/C/R: Standard.

NOTE: Chart not to scale.



DEPARTURE ROUTE DESCRIPTION

TAKEOFF RUNWAYS 12L/C/R: Climb on heading 124° or as assigned by ATC. Thence. . .

TAKEOFF RUNWAYS 30L/C/R: Climb on heading 304° or as assigned by ATC. Thence. . .

. . . expect RADAR vectors to cross ZEPER at or above 10000, then on track 308° to MAYSA, then on RRSTA TRANSITION. Maintain ATC assigned altitude, expect filed altitude 3 minutes after departure.

RRSTA TRANSITION (MAYSA7.RRSTA)

MAYSA SEVEN DEPARTURE (RNAV)
(MAYSA7.MAYSA) 21MAY20

PHOENIX, ARIZONA
PHOENIX-MESA GATEWAY (IWA)

SW-4, 26 DEC 2024 to 23 JAN 2025

SW-4, 26 DEC 2024 to 23 JAN 2025