

(PXR1.PXR) 23334

PHOENIX ONE DEPARTURE (OBSTACLE)

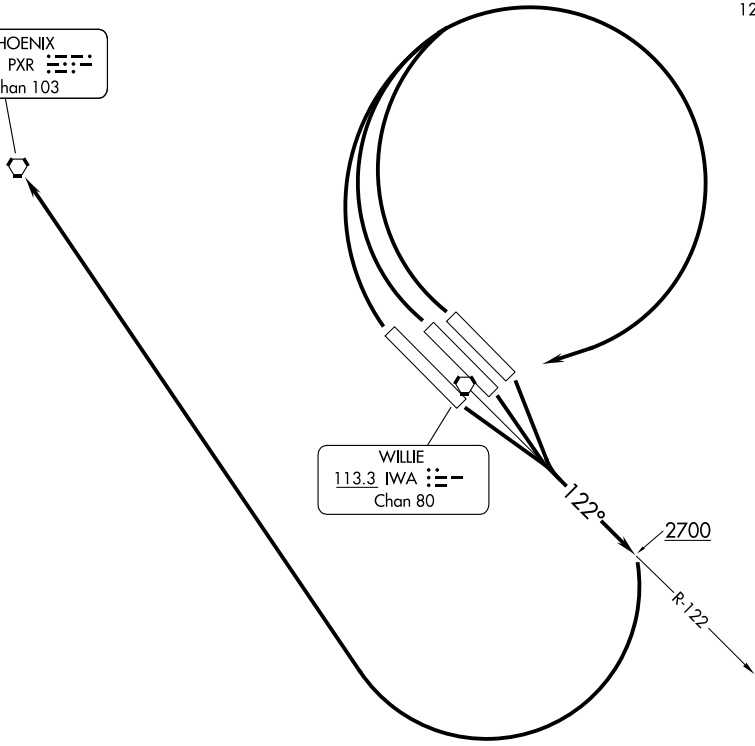
AL-74 (FAA)

PHOENIX-MESA GATEWAY (IWA)
PHOENIX, ARIZONA

ATIS★
 133.5 270.275
 CLNC DEL
 135.05
 GND CON
 128.25 275.8
 GATEWAY TOWER★
 120.6 (CTAF) 289.4
 PHOENIX DEP CON
 124.9 353.8

PHOENIX
 115.6 PXR ☰☱☲☳
 Chan 103

WILLIE
 113.3 IWA ☰☱☲☳
 Chan 80



TAKEOFF MINIMUMS

Rwys 12L, 12C, 12R, 30L, 30C, 30R: Standard.

TAKEOFF OBSTACLE NOTES

Rwys 30L/C/R: Trees beginning 351' from DER, 351' left of centerline, up to 20' AGL/1359' MSL.
 Trees beginning 689' from DER, 398' right of centerline, up to 20' AGL/1359' MSL.

NOTE: Chart not to scale.

DEPARTURE ROUTE DESCRIPTION

TAKEOFF RUNWAYS 12L/C/R: Climb to 2700 via IWA VORTAC R-122 then right turn direct PXR VORTAC.

TAKEOFF RUNWAYS 30L/C/R: Climbing right turn to 4000 direct IWA VORTAC and IWA VORTAC R-122 then right turn direct PXR VORTAC.

PHOENIX ONE DEPARTURE (OBSTACLE)

(PXR1.PXR) 11FEB10

PHOENIX, ARIZONA
PHOENIX-MESA GATEWAY (IWA)

SW-4, 26 DEC 2024 to 23 JAN 2025

SW-4, 26 DEC 2024 to 23 JAN 2025