

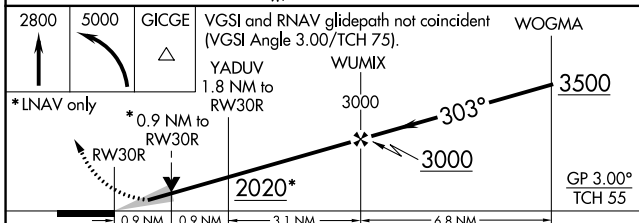
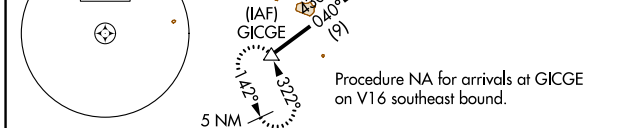
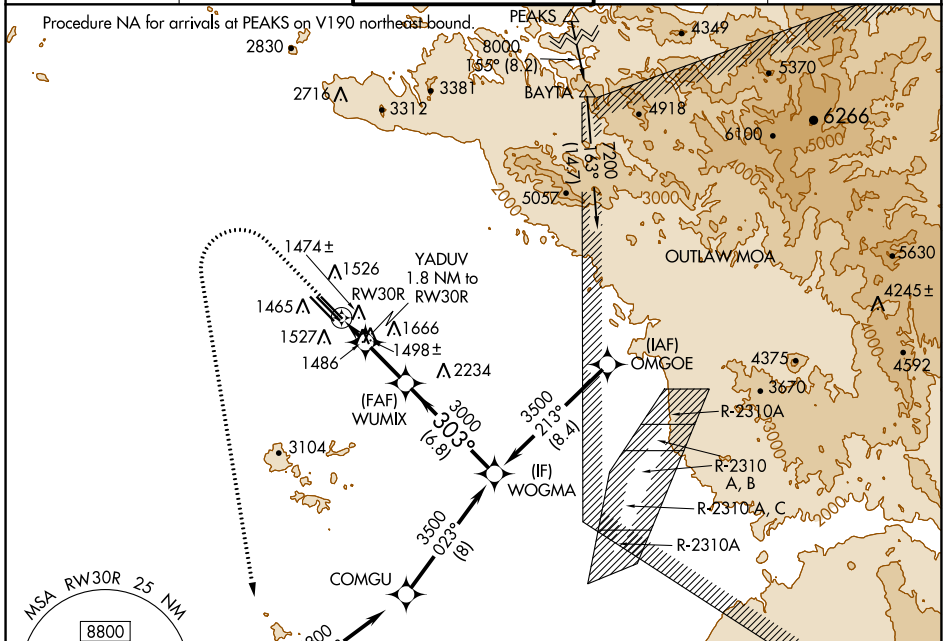
WAAS CH 69343 W30D	APP CRS 303°	Rwy ldg 9300 TDZE 1384 Apt Elev 1384
--	------------------------	---

RNAV (GPS) RWY 30R

PHOENIX-MESA GATEWAY (IWA)

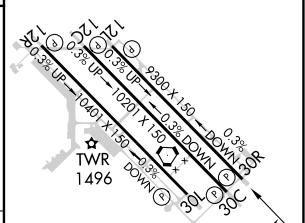
RNP APCH-GPS.	MISSED APPROACH: Climb to 2800 then climbing left turn to 5000 direct to GICGE and hold.
<p>▼ For uncompensated Baro-VNAV systems, LNAV/VNAV NA below -17°C or above 54°C.</p>	

ATIS ★ 133.5 270.275	PHOENIX APP CON 124.9 353.8	GATEWAY TOWER ★ 120.6 (CTAF) 289.4	GND CON 128.25 275.8	CLNC DEL 135.05
--------------------------------	---------------------------------------	--	--------------------------------	---------------------------



CATEGORY	A	B	C	D
LPV DA		1584-¾	200 (200-¾)	
LNAV/VNAV DA		1634-¾	250 (300-¾)	
LNAV MDA		1740-1	356 (400-1)	
C CIRCLING	1840-1	456 (500-1)	1880-1½ 496 (500-1½)	2000-2 616 (700-2)

ELEV 1384	D TDZE 1384
-----------	--------------------



MIRL Rwy 12R-30L
HIRL Rwy 12L-30R and 12C-30C
REIL Rwy 12L and 30R

SW-4, 26 DEC 2024 to 23 JAN 2025

SW-4, 26 DEC 2024 to 23 JAN 2025