

VORTAC CYS 113.1 Chan 78	APP CRS 196°	Rwy Idg TDZE Apt Elev N/A N/A 6160
--	------------------------	--

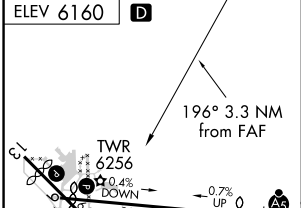
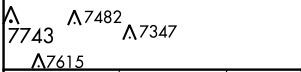
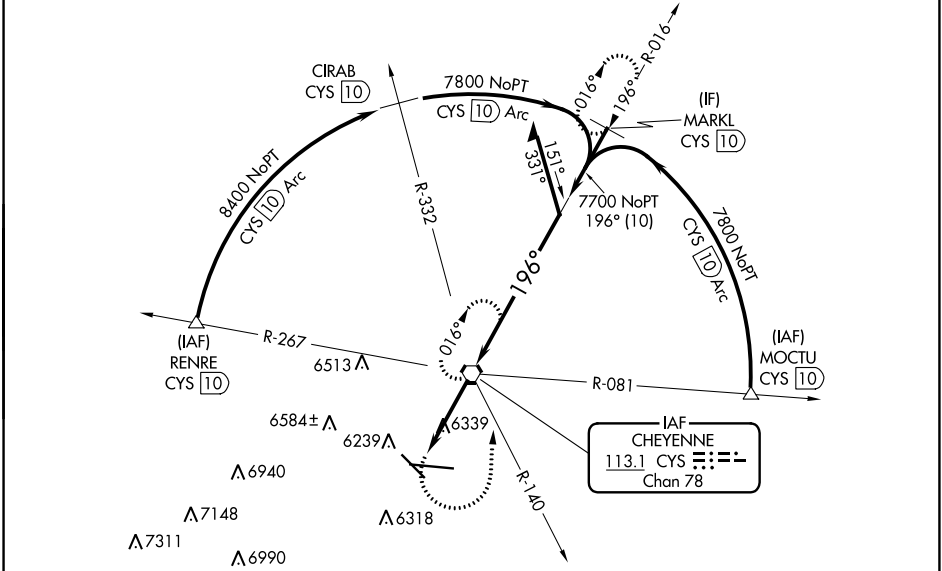
VOR or TACAN-A

CHEYENNE RGNL/JERRY OLSON FLD (CYS)

ASR/PAR

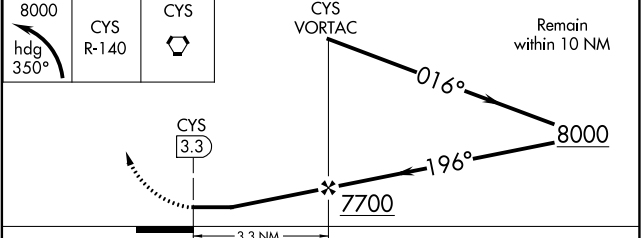
MISSED APPROACH: Climbing left turn to 8000 on heading 350° and on CYS VORTAC R-140 to CYS VORTAC and hold, continue climb-in-hold to 8000 (TACAN aircraft continue on CYS VORTAC R-016 to MARKL/10 DME and hold north, right turn, 196° inbound.)

ATIS 134.425 278.3	CHEYENNE APP CON * 124.55 263.075	CHEYENNE TOWER * 118.7 (CTAF) 0 257.8	GND CON 121.9 254.275	UNICOM 122.95
------------------------------	---	---	---------------------------------	-------------------------



REIL Rwy 9, 13 and 31
HIRL Rwy 9-27
MIRL Rwy 13-31

FAF to MAP 3.3 NM					
Knots	60	90	120	150	180
Min:Sec	3:18	2:12	1:39	1:19	1:06



CATEGORY	A	B	C	D
CIRCLING	6640-1	480 (500-1)	6900-2 740 (800-2)	6940-2½ 780 (800-2½)

NW-1, 26 DEC 2024 to 23 JAN 2025

NW-1, 26 DEC 2024 to 23 JAN 2025