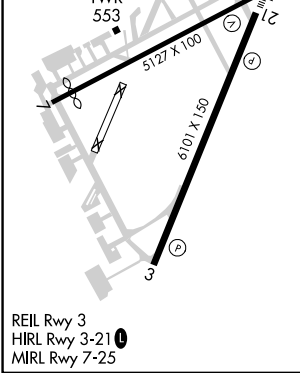
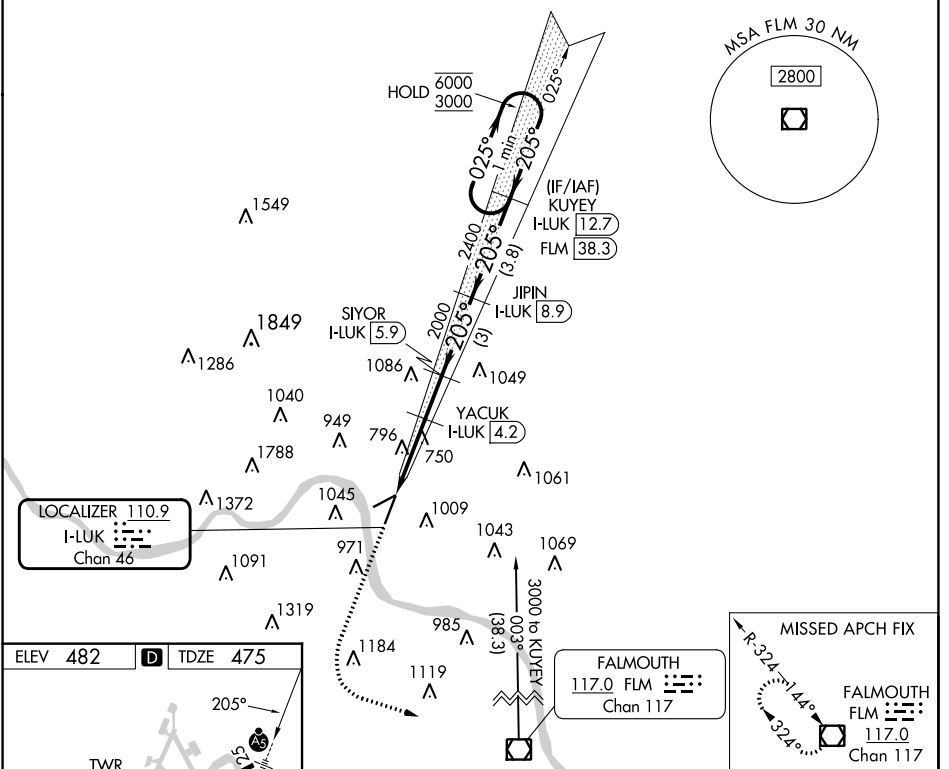


LOC/DME I-LUK	APP CRS	Rwy Idg	6101
110.9	205°	TDZE	475
Chan 46		Apt Elev	482

ILS or LOC RWY 21

CINCINNATI MUNI/LUNKEN FLD (LUK)

DME required.		MALSR		MISSED APPROACH: Climb to 2000 then climbing left turn to 3000 direct FLM VOR/DME and hold.		
<p>Rwy 21 helicopter visibility reduction below RVR 4000 NA. Circling Rwy 7 NA at night. Circling NA for Cat D north of Rwy 7-25. Inop table does not apply to S-ILS 21 all Cats and S-LOC 21 Cats A and B.</p>						
ATIS	CINCINNATI APP CON	LUNKEN TOWER ★	GND CON	CLNC DEL	CLNC DEL	UNICOM
123.6	121.0 254.25	118.7 (CTAF) 0 257.8	121.9	121.9	124.9 (When twr closed)	122.95



	2000	3000	FLM		SIYOR I-LUK [5.9] JIPIN I-LUK [8.9] KUYEY I-LUK [12.7]	One Minute Holding Pattern
	1.7 NM	1.3 NM	1.7 NM	3 NM	3.8 NM	GS 3.00° TCH 39
CATEGORY	A	B	C	D		
S-ILS 21	797/50		322 (400-1)			
S-LOC 21	1060/50	585 (600-1)	1060-1¼	585 (600-1¼)		
CIRCLING	1260-1	1360-1¼	1360-2½	1400-3		
	778 (800-1)	878 (900-1¼)	878 (900-2½)	918 (1000-3)		

EC-2, 26 DEC 2024 to 23 JAN 2025

EC-2, 26 DEC 2024 to 23 JAN 2025