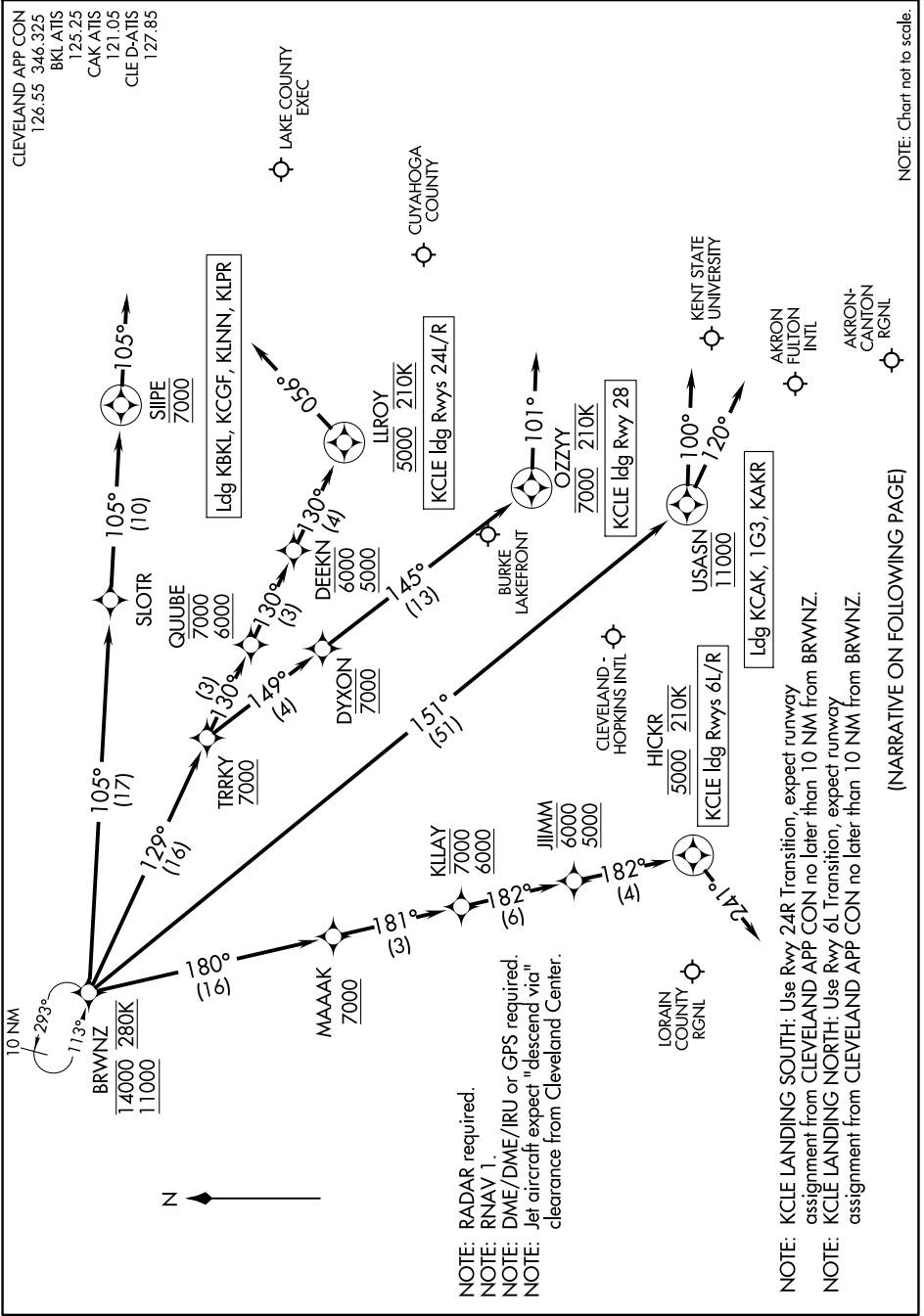


BRWNZ FOUR ARRIVAL (RNAV) Arrival Routes

EC-2, 26 DEC 2024 to 23 JAN 2025



NOTE: Chart not to scale.

(NARRATIVE ON FOLLOWING PAGE)

NOTE: RADAR required.
 NOTE: RNAV 1.
 NOTE: DME/DME/IRU or GPS required.
 NOTE: Jet aircraft expect "descend via" clearance from Cleveland Center.

NOTE: KCLE LANDING SOUTH: Use Rwy 24R Transition, expect runway assignment from CLEVELAND APP CON no later than 10 NM from BRWNZ.
 NOTE: KCLE LANDING NORTH: Use Rwy 6L Transition, expect runway assignment from CLEVELAND APP CON no later than 10 NM from BRWNZ.

EC-2, 26 DEC 2024 to 23 JAN 2025

BRWNZ FOUR ARRIVAL (RNAV) Arrival Routes