

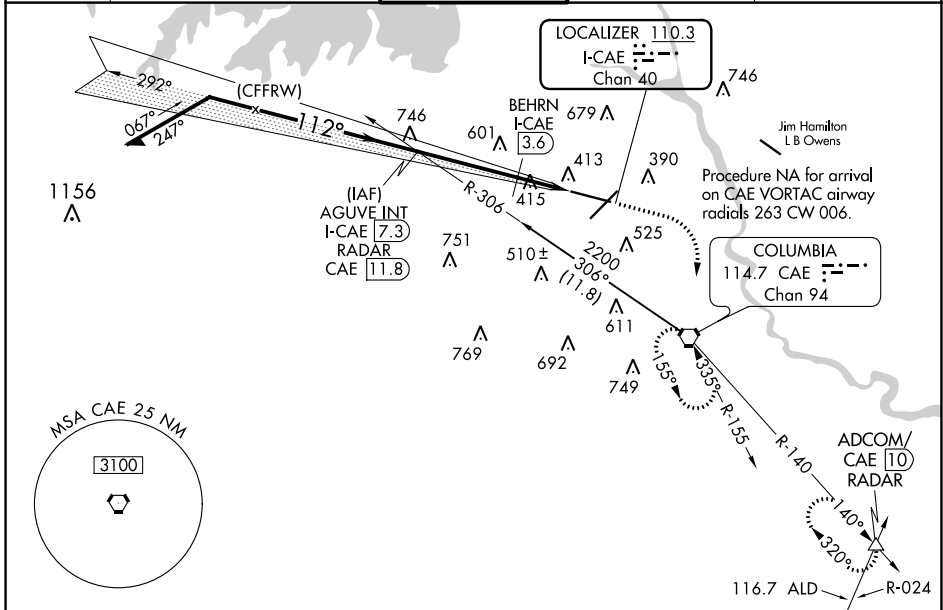
LOC/DME I-CAE <b>110.3</b> Chan 40	APP CRS <b>112°</b>	Rwy Idg <b>8601</b> TDZE <b>236</b> Apt Elev <b>236</b>
--	------------------------	---

# ILS or LOC RWY 11

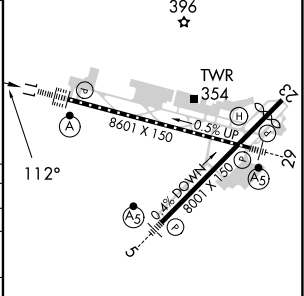
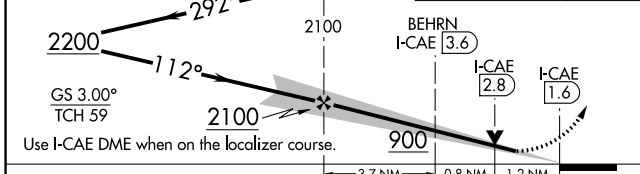
COLUMBIA METRO (CAE)

DME or RADAR required for LOC only.	ALSF-2 	MISSED APPROACH: Climb to 1100 then climbing right turn to 2300 direct CAE VORTAC and hold, continue climb-in-hold to 2300. (TACAN aircraft confine on CAE VORTAC R-140 to ADCOM INT/CAE VORTAC 10 DME and hold NW, right turn, 140° inbound)
-------------------------------------	------------	---

ATIS <b>120.15</b>	COLUMBIA APP CON <b>133.4 285.6</b> (290°-109°) <b>124.15 338.2</b> (110°-289°)	COLUMBIA TOWER <b>119.5 257.8</b>	GND CON <b>121.9 348.6</b>	CLNC DEL <b>119.75</b>
-----------------------	---	--------------------------------------	-------------------------------	---------------------------



AGUVE INT I-CAE <b>7.3</b> RADAR	1100	2300	CAE	ELEV 236	TDZE 236
----------------------------------	------	------	-----	----------	----------



CATEGORY	A	B	C	D	E
S-ILS 11	436/18 200 (200-½)				
S-LOC 11	900/24	664 (700-½)	900-1½	664 (700-1½)	
CIRCLING	900-1	664 (700-1)	1040-2¼ 804 (900-2¼)	1040-2½ 804 (900-2½)	1040-2¾ 804 (900-2¾)
BEHRN MINIMUMS (DME REQUIRED)					
S-LOC 11	680/24	444 (500-½)	680/45 444 (500-¾)		
CIRCLING	740-1 504 (600-1)	860-1 624 (700-1)	1040-2¼ 804 (900-2¼)	1040-2½ 804 (900-2½)	1040-2¾ 804 (900-2¾)

REIL Rwy 23	60	90	120	150	180
TDZ/CL Rwy 11	5:42	3:48	2:51	2:17	1:54
HIRL Rlys 5-23 and 11-29	FAF to MAP 5.7 NM				
Min:Sec	5:42	3:48	2:51	2:17	1:54

SE-2, 26 DEC 2024 to 23 JAN 2025

SE-2, 26 DEC 2024 to 23 JAN 2025