

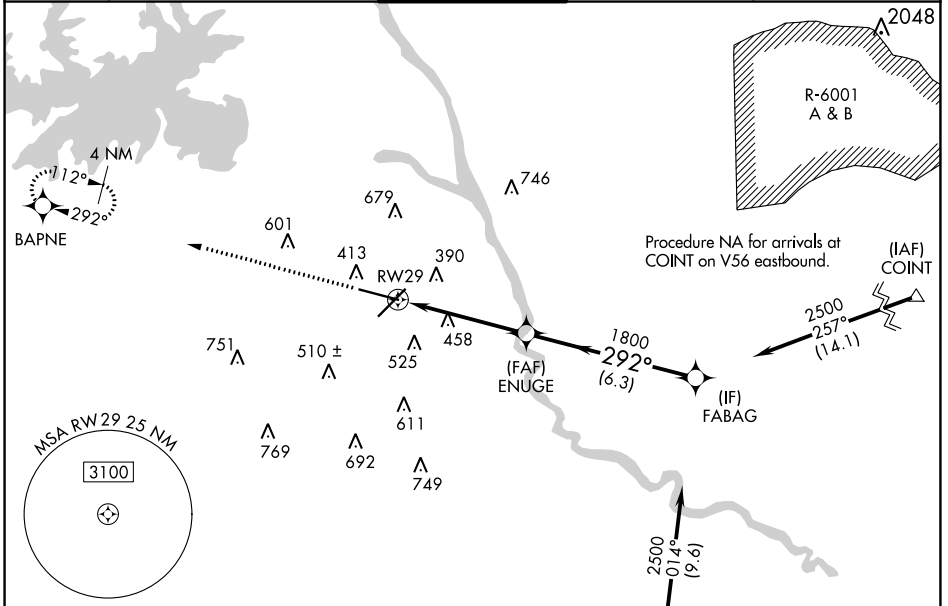
WAAS CH <b>53414</b> <b>W29A</b>	APP CRS <b>292°</b>	Rwy Idg TDZE Apt Elev	<b>8506</b> <b>227</b> <b>236</b>
--	------------------------	-----------------------------	---

# RNAV (GPS) RWY 29

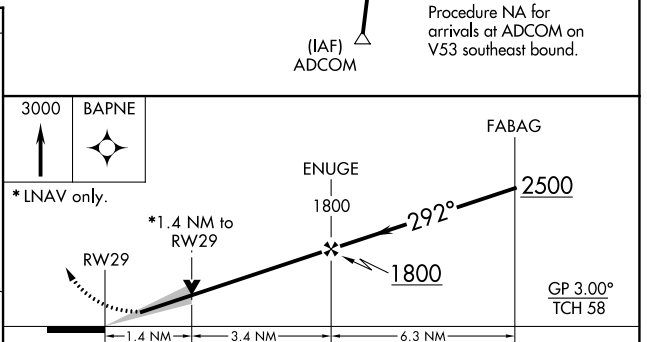
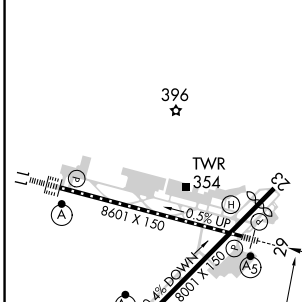
COLUMBIA METRO (CAE)

	For uncompensated Baro-VNAV systems, LNAV/VNAV NA below -1.5°C (5°F) or above 48°C (118°F). DME/DME RNP-0.3 NA. **RVR 1800 authorized with use of FD or AP or HUD to DA.	MALSR 	MISSED APPROACH: Climb to 3000 direct BAPNE and hold.	
				ATIS <b>120.15</b>

ATIS <b>120.15</b>	COLUMBIA APP CON <b>133.4 285.6</b> (290°-109°) <b>124.15 338.2</b> (110°-289°)	COLUMBIA TOWER <b>119.5 257.8</b>	GND CON <b>121.9 348.6</b>	CLNC DEL <b>119.75</b>
-----------------------	---	--------------------------------------	-------------------------------	---------------------------



ELEV 236	<b>D</b>	TDZE 227
----------	----------	----------



CATEGORY	A	B	C	D
LPV DA **	427/24 200 (200-½)			
LNAV/VNAV DA	544/24 317 (400-½)			544/40 317 (400-¾)
LNAV MDA	720/24	493 (500-½)	720/40 493 (500-¾)	720/50 493 (500-1)
CIRCLING	740-1 504 (600-1)	860-1 624 (700-1)	1040-2¼ 804 (900-2¼)	1040-2½ 804 (900-2½)

REIL Rwy 23  
TDZ/CL Rwy 11  
HIRL Rwy 5-23 and 11-29

SE-2, 26 DEC 2024 to 23 JAN 2025

SE-2, 26 DEC 2024 to 23 JAN 2025