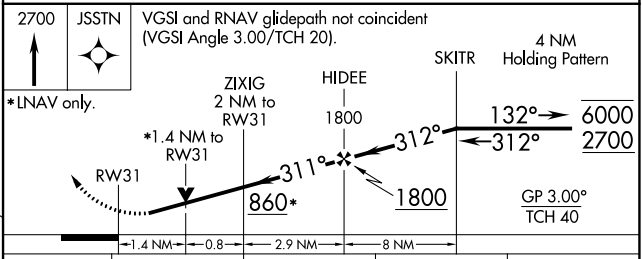
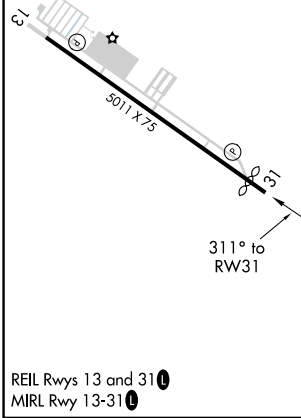
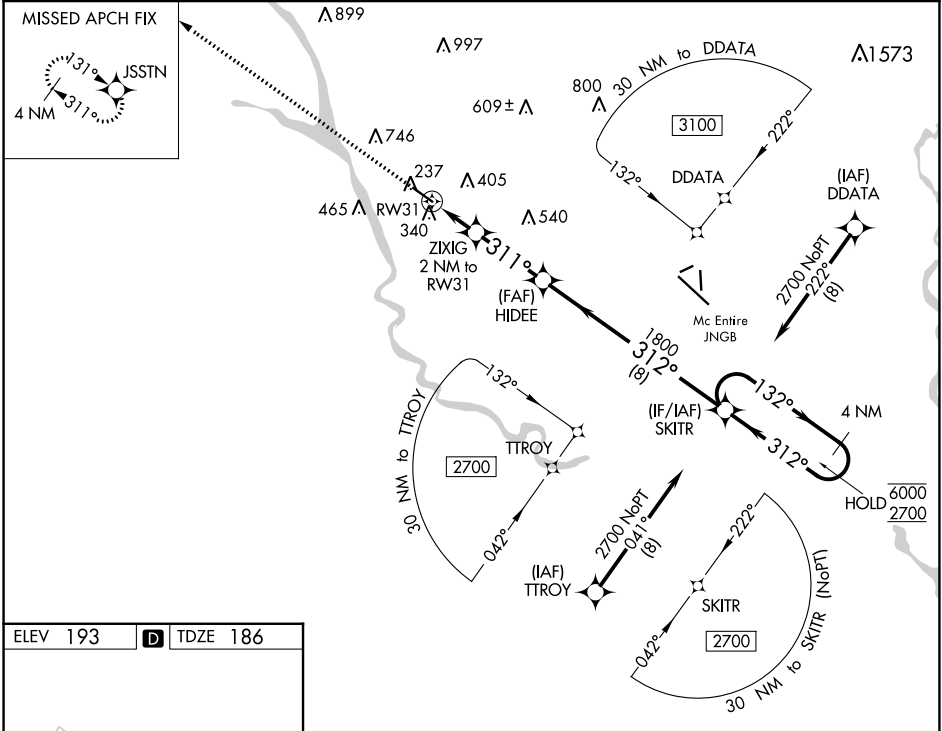


WAAS CH 42742 W31A	APP CRS 311°	Rwy Idg TDZE Apt Elev	4599 186 193
--	------------------------	-----------------------------	---

RNAV (GPS) RWY 31

JIM HAMILTON L B OWENS (CUB)

RNP APCH.		MISSED APPROACH: Climb to 2700 direct JSSTN and hold.	
<p>▼ Rwy 31 helicopter visibility reduction below 3/4 SM NA. For uncompensated Baro-VNAV systems, LNAV/VNAV NA below -6°C or above 54°C.</p>			
ASOS 118.675	COLUMBIA APP CON 133.4 285.6	CLNC DEL 124.4	UNICOM 123.075 (CTAF) 0



2700 JSSTN	VGSI and RNAV glidepath not coincident (VGSI Angle 3.00/TCH 20).			4 NM Holding Pattern
*LNAV only.	ZIXIG 2 NM to RW31	HIDEE 1800	SKITR	6000 / 2700
RW31	*1.4 NM to RW31	1800	312°	GP 3.00° TCH 40
	1.4 NM	0.8	2.9 NM	8 NM
CATEGORY	A	B	C	D
LPV DA	436-3/4		250 (300-3/4)	
LNAV/VNAV DA	551-1		365 (400-1)	
LNAV MDA	640-1	454 (500-1)	640-1 3/8	454 (500-1 3/8)

SE-2, 26 DEC 2024 to 23 JAN 2025

SE-2, 26 DEC 2024 to 23 JAN 2025