

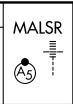
APP CRS	Rwy Idg	<b>8000</b>
<b>101°</b>	TDZE	<b>815</b>
	Apt Elev	<b>815</b>

# RNAV (RNP) Z RWY 10L

JOHN GLENN COLUMBUS INTL (CMH)

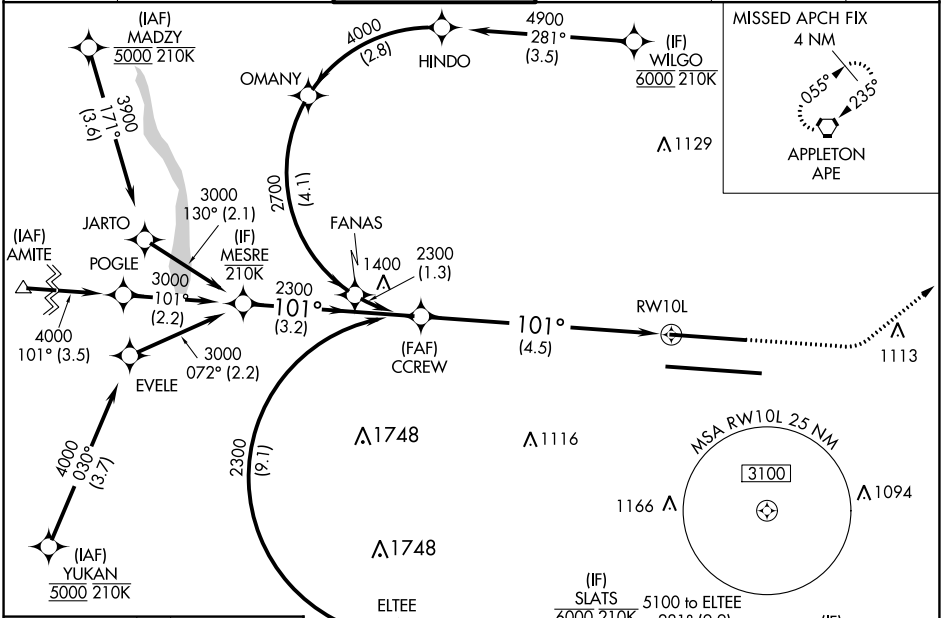
RNP AR APCH - GPS.

Simultaneous approach authorized. For uncompensated Baro-VNAV systems, procedure NA below -14°C or above 54°C. For inop ALS, increase RNP 0.30 all Cats visibility to RVR 6000.

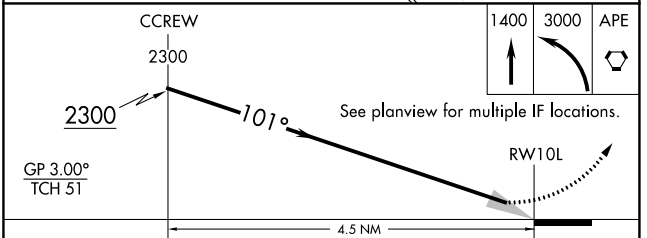
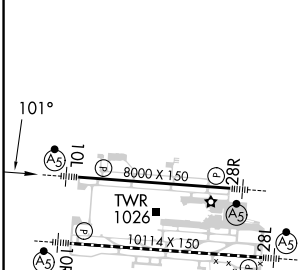


**MISSED APPROACH:**  
Climb to 1400 then climbing left turn to 3000 direct APE VORTAC and hold.

D-ATIS	COLUMBUS APP CON	COLUMBUS TOWER	GND CON	CLNC DEL	CPDLC
<b>124.6</b>	<b>125.95 371.975</b>	<b>132.7 257.8</b>	<b>121.9 348.6</b>	<b>126.3</b>	



ELEV	<b>815</b>	<b>D</b>	TDZE	<b>815</b>
------	------------	----------	------	------------



CATEGORY	A	B	C	D
RNP 0.13 DA		1148/26	333 (400-1/2)	
RNP 0.26 DA		1198/35	383 (400-3/8)	
RNP 0.30 DA		1216/40	401 (500-3/4)	

TDZ/CL Rwy 10R and 28L  
HIRL Rwy 10R-28L and 10L-28R

**AUTHORIZATION REQUIRED**

EC-2, 26 DEC 2024 to 23 JAN 2025

EC-2, 26 DEC 2024 to 23 JAN 2025