

# RNAV (RNP) Z RWY 10R


JOHN GLENN COLUMBUS INTL (CMH)

APP CRS	Rwy Idg	<b>10113</b>
<b>101°</b>	TDZE	<b>809</b>
	Apt Elev	<b>815</b>

RNP AR APCH - GPS.

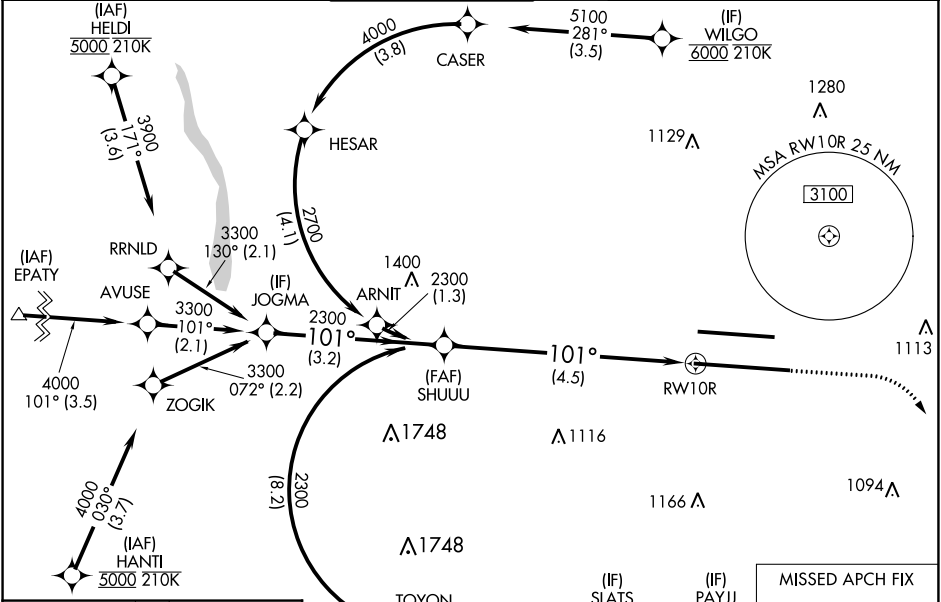
Simultaneous approach authorized. For uncompensated Baro-VNAV systems, procedure NA below -14°C or above 54°C. For inop ALS, increase RNP 0.30 all Cats visibility to RVR 6000.

MALSR

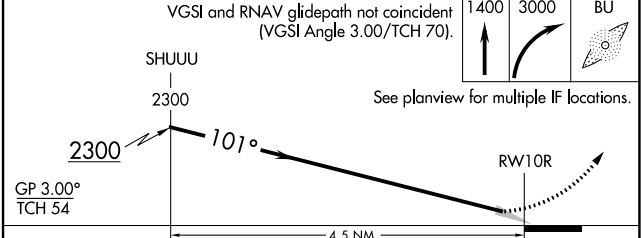
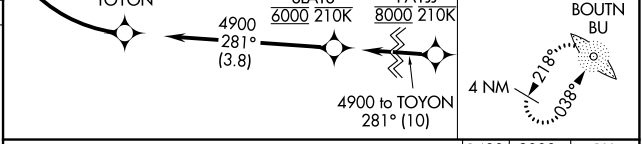
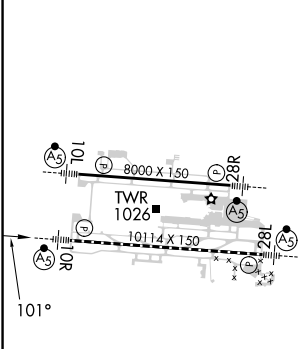


MISSED APPROACH: Climb to 1400 then climbing right turn to 3000 direct BOUTN LOM and hold.

D-ATIS	COLUMBUS APP CON	COLUMBUS TOWER	GND CON	CLNC DEL	CPDLC
<b>124.6</b>	<b>125.95 371.975</b>	<b>132.7 257.8</b>	<b>121.9 348.6</b>	<b>126.3</b>	



ELEV 815	<b>D</b>	TDZE 809
----------	----------	----------



CATEGORY	A	B	C	D
RNP 0.17 DA		1138/26	329 (400-½)	
RNP 0.30 DA		1214/40	405 (400-¾)	

## AUTHORIZATION REQUIRED

EC-2, 26 DEC 2024 to 23 JAN 2025

EC-2, 26 DEC 2024 to 23 JAN 2025