

WAAS CH 86619 W28B	APP CRS 281°	Rwy Idg TDZE Apt Elev	8000 813 815
--	------------------------	-----------------------------	---

RNAV (GPS) Y RWY 28R

JOHN GLENN COLUMBUS INTL (CMH)

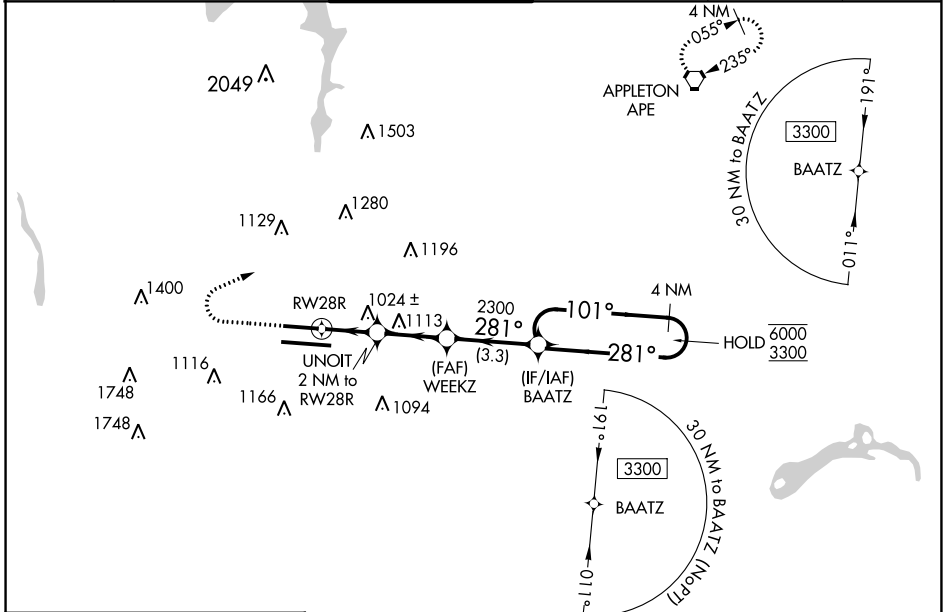
RNP APCH.

Simultaneous approach authorized. For uncompensated Baro-VNAV systems, LNAV/VNAV NA below -19°C or above 54°C. LNAV procedure NA during simultaneous operations. Use of FD or AP providing RNAV track guidance required during simultaneous operations. For inop ALS, increase LNAV/VNAV all Cats visibility or RVR 4500; increase LNAV Cat C/D visibility to 1 3/8 SM. #RVR 1800 authorized with use of FD or AP or HUD to DA.

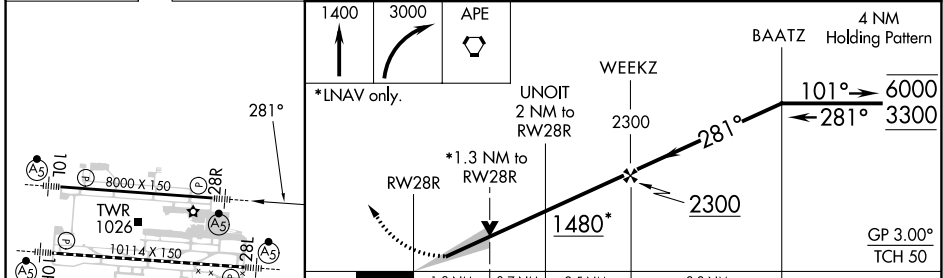
MALSR

MISSED APPROACH: Climb to 1400 then climbing right turn to 3000 direct APE VORTAC and hold.

D-ATIS 124.6	COLUMBUS APP CON 125.95 371.975	COLUMBUS TOWER 132.7 257.8	GND CON 121.9 348.6	CLNC DEL 126.3	CPDLC
------------------------	---	--------------------------------------	-------------------------------	--------------------------	-------



ELEV 815	D	TDZE 813
----------	----------	----------



CATEGORY	A	B	C	D
LPV DA #	1013/24 200 (200-1/2)			
LNAV/VNAV DA	1096/24 283 (300-1/2)			
LNAV MDA	1280/24	467 (500-1/2)	1280/50	467 (500-1)
C CIRCLING	1340-1	525 (600-1)	1520-2 705 (800-2)	1520-2 1/4 705 (800-2 1/4)

TDZ/Cl Rwy 10R-28L
HIRL Rwy 10R-28L and 10L-28R

EC-2, 26 DEC 2024 to 23 JAN 2025

EC-2, 26 DEC 2024 to 23 JAN 2025